



MLS 7055081 Lake Home

\$619,900

2,128 sq ft
4 bedrooms
4 baths

23020 Glenhaven Drive
Nevis MN 56467

Waterfront: Spider Lake (29011700)

Status: Active

Description:

Escape to the perfect "Up North" retreat on beautiful Spider Lake! This inviting 4-bedroom, 3-bath home offers a rare blend of comfort, character, and potential, featuring a light-filled main floor with a stunning lakeside wall of windows, a charming kitchen with cherry custom cabinetry, and a welcoming living room highlighted by manufactured hardwood flooring, all flowing seamlessly to a spacious wraparound deck - ideal for relaxing or entertaining among the pines. The primary suite includes a private full bath, while a second main-floor bedroom offers convenient access to a pass-through ¼ bathroom. The walk-out lower level provides a generous family room with durable tile flooring and a roughed-in sink area - perfect for a future wet bar or kitchenette - along with two additional bedrooms, an additional ¼ bath, laundry area, and plenty of space for guests. A loft area with a ½ bath adds even more flexibility for extra sleeping or recreation. Outside, enjoy a gradual elevation to the lake, low-maintenance siding, a paved driveway, and a 24' x 28' detached garage for all your storage needs, plus a lakeside he/she shed full of potential for a studio, bunkhouse, or peaceful retreat. Surrounded by mature trees and towering pines, this property captures the essence of lake life just minutes from the charm and conveniences of Nevis.

Additional Details:


Year Built	2015
Lot Acres	1.14
Lot Dimensions	156x312x150x354
Garage Stalls	2
School District	308
Taxes	\$3,556
Taxes with Assessments	\$4,046
Tax Year	2026

Additional Features:

Fuel: Propane **Heat:** Forced Air

Driving Directions:

From Walker, go west on MN-34 for 12.3 miles and turn right onto 285th St which becomes 240th. In 3.6 miles turn left onto Cty 2. In 1.5 miles turn right onto Goldfinch Dr and in .3 mile turn right onto Glenhaven Dr. The property is on the right in .1 mile.

 Listed By:
Bill Hansen Realty/Walker

Affinity Real Estate Inc. participates in the Regional Multiple Listing Service of Minnesota, Inc Broker Reciprocity (sm) program, allowing us to display other broker's listings on our website. All properties are subject to prior sale, change or withdrawal.

 **Call Affinity Real Estate**
218-237-3333
info@affinityrealestate.com

Affinity Real Estate - 600 Park Avenue South - Park Rapids MN 56470



website: www.AffinityRealEstate.com | email: info@affinityrealestate.com | office: 218-237-3333 | fax:218-237-3377

Affinity
REAL ESTATE INC

\$619,900
MLS 7055081 Lake Home
23020 Glenhaven Drive
Nevis MN 56467



website: www.AffinityRealEstate.com | email: info@affinityrealestate.com | office: 218-237-3333 | fax:218-237-3377



\$619,900
MLS 7055081 Lake Home
23020 Glenhaven Drive
Nevis MN 56467



website: www.AffinityRealEstate.com | email: info@affinityrealestate.com | office: 218-237-3333 | fax: 218-237-3377

Affinity
REAL ESTATE INC

\$619,900
MLS 7055081 Lake Home
23020 Glenhaven Drive
Nevis MN 56467



website: www.AffinityRealEstate.com | email: info@affinityrealestate.com | office: 218-237-3333 | fax: 218-237-3377

Affinity
REAL ESTATE INC

\$619,900
MLS 7055081 Lake Home
23020 Glenhaven Drive
Nevis MN 56467



website: www.AffinityRealEstate.com | email: info@affinityrealestate.com | office: 218-237-3333 | fax:218-237-3377



\$619,900
MLS 7055081 Lake Home
23020 Glenhaven Drive
Nevis MN 56467



website: www.AffinityRealEstate.com | email: info@affinityrealestate.com | office: 218-237-3333 | fax:218-237-3377



\$619,900
MLS 7055081 Lake Home
23020 Glenhaven Drive
Nevis MN 56467



website: www.AffinityRealEstate.com | email: info@affinityrealestate.com | office: 218-237-3333 | fax:218-237-3377



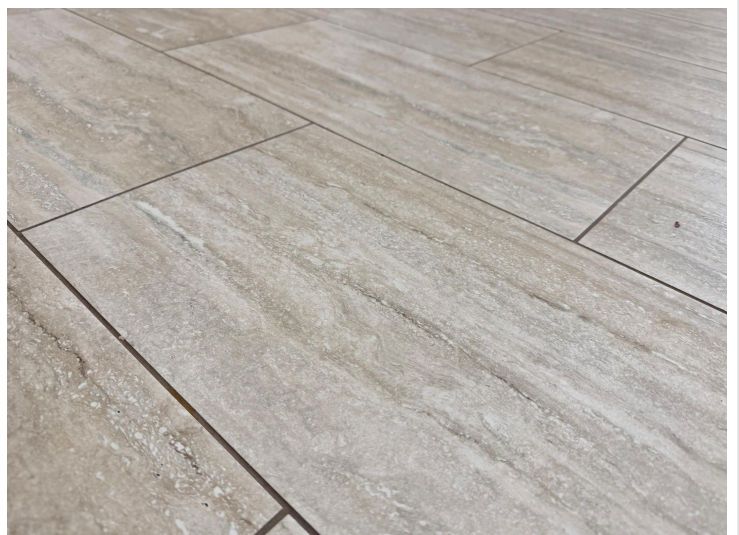
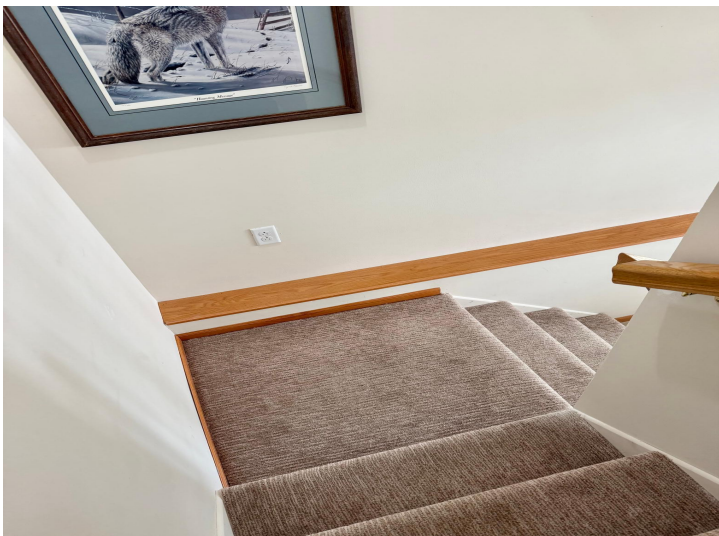
\$619,900
MLS 7055081 Lake Home
23020 Glenhaven Drive
Nevis MN 56467



website: www.AffinityRealEstate.com | email: info@affinityrealestate.com | office: 218-237-3333 | fax:218-237-3377



\$619,900
MLS 7055081 Lake Home
23020 Glenhaven Drive
Nevis MN 56467



website: www.AffinityRealEstate.com | email: info@affinityrealestate.com | office: 218-237-3333 | fax:218-237-3377



\$619,900
MLS 7055081 Lake Home
23020 Glenhaven Drive
Nevis MN 56467



website: www.AffinityRealEstate.com | email: info@affinityrealestate.com | office: 218-237-3333 | fax:218-237-3377

Affinity
REAL ESTATE INC

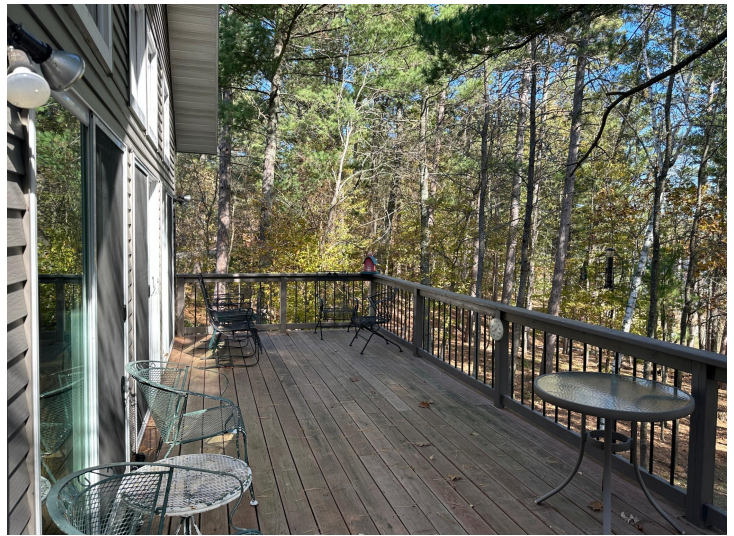
\$619,900
MLS 7055081 Lake Home
23020 Glenhaven Drive
Nevis MN 56467



website: www.AffinityRealEstate.com | email: info@affinityrealestate.com | office: 218-237-3333 | fax: 218-237-3377

Affinity
REAL ESTATE INC

\$619,900
MLS 7055081 Lake Home
23020 Glenhaven Drive
Nevis MN 56467



website: www.AffinityRealEstate.com | email: info@affinityrealestate.com | office: 218-237-3333 | fax: 218-237-3377

Affinity
REAL ESTATE INC

\$619,900
MLS 7055081 Lake Home
23020 Glenhaven Drive
Nevis MN 56467



website: www.AffinityRealEstate.com | email: info@affinityrealestate.com | office: 218-237-3333 | fax: 218-237-3377

Affinity
REAL ESTATE INC

\$619,900
MLS 7055081 Lake Home
23020 Glenhaven Drive
Nevis MN 56467



website: www.AffinityRealEstate.com | email: info@affinityrealestate.com | office: 218-237-3333 | fax:218-237-3377



\$619,900
MLS 7055081 Lake Home
23020 Glenhaven Drive
Nevis MN 56467



website: www.AffinityRealEstate.com | email: info@affinityrealestate.com | office: 218-237-3333 | fax: 218-237-3377



\$619,900
MLS 7055081 Lake Home
23020 Glenhaven Drive
Nevis MN 56467



website: www.AffinityRealEstate.com | email: info@affinityrealestate.com | office: 218-237-3333 | fax:218-237-3377

Affinity
REAL ESTATE INC

\$619,900
MLS 7055081 Lake Home
23020 Glenhaven Drive
Nevis MN 56467



website: www.AffinityRealEstate.com | email: info@affinityrealestate.com | office: 218-237-3333 | fax:218-237-3377



\$619,900
MLS 7055081 Lake Home
23020 Glenhaven Drive
Nevis MN 56467