



MLS 7055085 Residential

**\$399,900**

960 sq ft  
2 bedrooms  
1 baths

9688 Walleye Road  
Brandon MN 56315

Status: Coming Soon

**Description:**

Discover the perfect summer retreat nestled at the end of a quiet cul-de-sac lot on Stowe Lake. Enjoy stress-free lake living in this charming, maintenance-free cabin featuring a steel roof and vinyl siding. It features an open floor plan with vaulted ceilings and a spacious sleeping loft ideal for accommodating family and friends. Imagine relaxing in the screened-in gazebo, sipping coffee on the lakeside deck or watching the kids play in the water. There are endless options on this large 2 acre level lot with 300' of sand shoreline and extra parking that provides plenty of room for outdoor entertaining and yard games. There is also a newer detached garage providing tons of storage for all your lake essentials. Enjoy the up north feel and privacy of lakeside living while still being conveniently located just 15 minutes from the shopping, restaurants, and recreational activities of Alexandria. Start making unforgettable summer memories in your private lakeside haven!

**Additional Details:**

Year Built	2012
Lot Acres	2.09
Lot Dimensions	269x252x89x304x270
Garage Stalls	1
School District	1316
Taxes	\$2,650
Taxes with Assessments	\$2,650
Tax Year	2026

**Additional Features:**

**Fuel:** Array **Heat:** Baseboard

**Driving Directions:**

I-94W to County Rd 7 in Brandon & Take exit 90, Turn right onto County Rd 7 NW, Continue onto Central Ave, Turn left onto 2nd St W, 2nd St W turns slightly right and becomes County Rd 16 NW, Turn left onto Lehn U Trail NW, Turn right onto Walleye Rd NW, Destination will be on the Left at roads end.



Listed By:  
RE/MAX Advantage Plus

Affinity Real Estate Inc. participates in the Regional Multiple Listing Service of Minnesota, Inc Broker Reciprocity (sm) program, allowing us to display other broker's listings on our website. All properties are subject to prior sale, change or withdrawal.



**Call Affinity Real Estate**

**218-237-3333**

**info@affinityrealestate.com**



**Affinity Real Estate - 600 Park Avenue South - Park Rapids MN 56470**



website: [www.AffinityRealEstate.com](http://www.AffinityRealEstate.com) | email: [info@affinityrealestate.com](mailto:info@affinityrealestate.com) | office: 218-237-3333 | fax:218-237-3377

**Affinity**  
REAL ESTATE INC

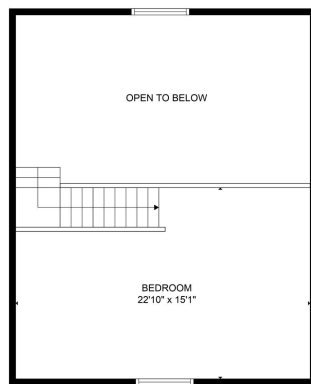
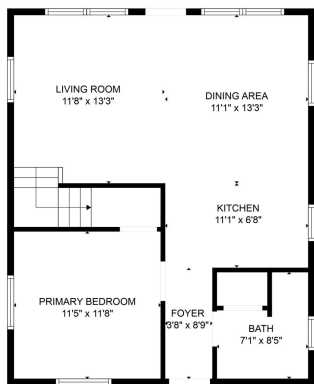
**\$399,900**  
MLS 7055085 Residential  
9688 Walleye Road  
Brandon MN 56315



website: [www.AffinityRealEstate.com](http://www.AffinityRealEstate.com) | email: [info@affinityrealestate.com](mailto:info@affinityrealestate.com) | office: 218-237-3333 | fax: 218-237-3377



**\$399,900**  
MLS 7055085 Residential  
9688 Walleye Road  
Brandon MN 56315



FLOOR PLAN CREATED BY CUBSCASA APP. MEASUREMENTS DEEMED HIGHLY RELIABLE BUT NOT GUARANTEED.



website: [www.AffinityRealEstate.com](http://www.AffinityRealEstate.com) | email: [info@affinityrealestate.com](mailto:info@affinityrealestate.com) | office: 218-237-3333 | fax: 218-237-3377

**Affinity**  
REAL ESTATE INC

**\$399,900**  
MLS 7055085 Residential  
9688 Walleye Road  
Brandon MN 56315



website: [www.AffinityRealEstate.com](http://www.AffinityRealEstate.com) | email: [info@affinityrealestate.com](mailto:info@affinityrealestate.com) | office: 218-237-3333 | fax:218-237-3377



**\$399,900**  
MLS 7055085 Residential  
9688 Walleye Road  
Brandon MN 56315