



MLS 7055139 Residential

\$649,000

3,920 sq ft
4 bedrooms
3 baths

24389 70th Avenue
Hawley MN 56549

Status: Active

Description:

Wonderful Country setting on 6+ Acres just a North of Hawley. This property was completely redone and major addition completed in 2001. Open Kitchen Plan, Large living room with Gas Fireplace, 4 Bedrooms upstairs, Huge Primary Suite with Private Bath. Finished Basement with Family room and separate game room and exercise areas, Wonderful 3 season Sun Room, 28 x 28 Attached Finished, Heated Garage with Walkdown to Basement access as well as 30 x 40 pole shed, Amazing Sunrise and Sunset views from this nicely treed 6+ acre county property. These opportunities only come along every so often, Make this one yours!

Additional Details:

Year Built	2001
Lot Acres	6.49
Lot Dimensions	1
Garage Stalls	2
School District	2337
Taxes	\$5,120
Taxes with Assessments	\$5,120
Tax Year	2025

Additional Features:

Basement: Finished, Full **Fuel:** Array **Garage:** 2 **Heat:** Forced Air **Sewer:** Tank with Drainage Field **Water:** Well **Air Conditioning:** Central Air

Driving Directions:

From HWY 10 take HWY 32 north to 70th Ave N turn west, follow 70th Ave N to the property. Property on the South side of 70th Ave



Listed By:
HomeSmart Adventure Realty (DL)

Affinity Real Estate Inc. participates in the Regional Multiple Listing Service of Minnesota, Inc Broker Reciprocity (sm) program, allowing us to display other broker's listings on our website. All properties are subject to prior sale, change or withdrawal.



Call Affinity Real Estate

218-237-3333

info@affinityrealestate.com



Affinity Real Estate - 600 Park Avenue South - Park Rapids MN 56470



website: www.AffinityRealEstate.com | email: info@affinityrealestate.com | office: 218-237-3333 | fax:218-237-3377

Affinity
REAL ESTATE INC

\$649,000
MLS 7055139 Residential
24389 70th Avenue
Hawley MN 56549



website: www.AffinityRealEstate.com | email: info@affinityrealestate.com | office: 218-237-3333 | fax:218-237-3377

Affinity
REAL ESTATE INC

\$649,000
MLS 7055139 Residential
24389 70th Avenue
Hawley MN 56549



website: www.AffinityRealEstate.com | email: info@affinityrealestate.com | office: 218-237-3333 | fax:218-237-3377

Affinity
REAL ESTATE INC

\$649,000
MLS 7055139 Residential
24389 70th Avenue
Hawley MN 56549



website: www.AffinityRealEstate.com | email: info@affinityrealestate.com | office: 218-237-3333 | fax:218-237-3377

Affinity
REAL ESTATE INC

\$649,000
MLS 7055139 Residential
24389 70th Avenue
Hawley MN 56549



website: www.AffinityRealEstate.com | email: info@affinityrealestate.com | office: 218-237-3333 | fax:218-237-3377

Affinity
REAL ESTATE INC

\$649,000
MLS 7055139 Residential
24389 70th Avenue
Hawley MN 56549



website: www.AffinityRealEstate.com | email: info@affinityrealestate.com | office: 218-237-3333 | fax: 218-237-3377

Affinity
REAL ESTATE INC

\$649,000
MLS 7055139 Residential
24389 70th Avenue
Hawley MN 56549



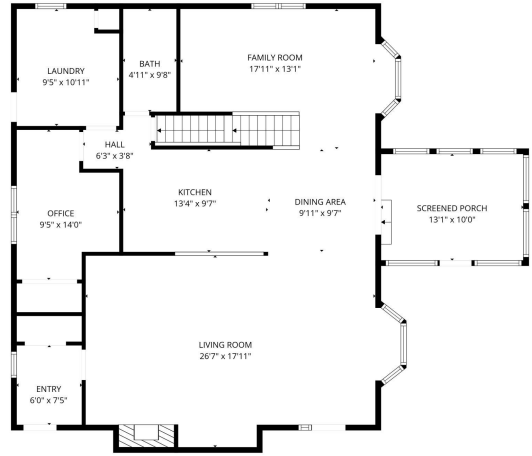
website: www.AffinityRealEstate.com | email: info@affinityrealestate.com | office: 218-237-3333 | fax: 218-237-3377

Affinity
REAL ESTATE INC

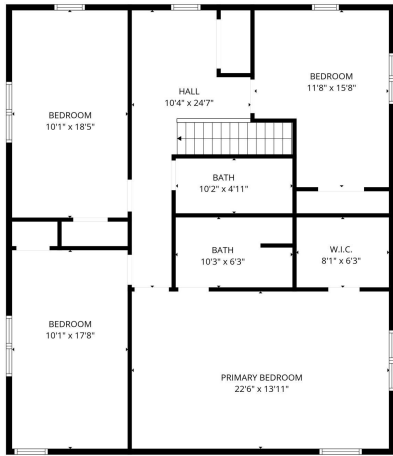
\$649,000
MLS 7055139 Residential
24389 70th Avenue
Hawley MN 56549



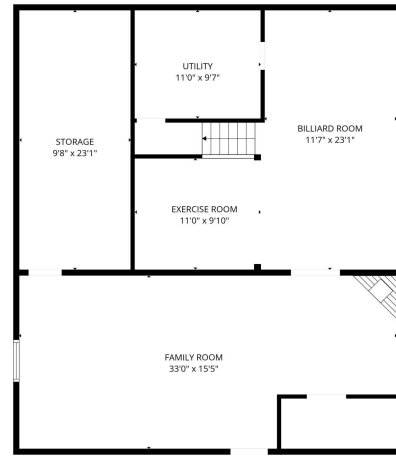
FLOOR PLAN CREATED BY CUBICSCAPE APP. MEASUREMENTS DEEMED HIGHLY RELIABLE BUT NOT GUARANTEED.



FLOOR PLAN CREATED BY CUBICSCAPE APP. MEASUREMENTS DEEMED HIGHLY RELIABLE BUT NOT GUARANTEED.



FLOOR PLAN CREATED BY CUBICSCAPE APP. MEASUREMENTS DEEMED HIGHLY RELIABLE BUT NOT GUARANTEED.



FLOOR PLAN CREATED BY CUBICSCAPE APP. MEASUREMENTS DEEMED HIGHLY RELIABLE BUT NOT GUARANTEED.



website: www.AffinityRealEstate.com | email: info@affinityrealestate.com | office: 218-237-3333 | fax: 218-237-3377



\$649,000
 MLS 7055139 Residential
 24389 70th Avenue
 Hawley MN 56549

website: www.AffinityRealEstate.com | email: info@affinityrealestate.com | office: 218-237-3333 | fax:218-237-3377



\$649,000

MLS 7055139 Residential
24389 70th Avenue
Hawley MN 56549