



MLS 7055278 Residential

\$150,000

448 sq ft
1 bedrooms
1 baths

38092 County Highway 44
Richville MN 56576

Status: Active

Description:

ADORABLE & AFFORDABLE LAKE CABINS ON DEAD LAKE. Check out the area's newest CIC on the ever-popular Dead Lake. 1 bedroom to 3 bedroom FULLY FURNISHED cabins available. BOAT SLIP and STORAGE SPACE included. HOA will cover groundskeeping, dock-install and removal, septic pumping, garbage and winterization of each cabin. Blow in and blow out with the changing seasons.

Additional Details:


Year Built	1954
Lot Acres	2.5
Lot Dimensions	common
School District	1955
Taxes	\$1,096
Taxes with Assessments	\$1,096
Tax Year	2026

Additional Features:

Fuel: Array **Heat:** None

Driving Directions:

Turn right onto 460th St
Turn left onto 410th Ave -2.0 mi
Continue onto Co Hwy 125 -3.0 mi
Turn right onto MN-108 W -3.9 mi
Turn left onto 1st Ave N-0.3 mi
Turn right onto Co Rd 35/Main St
Continue to follow Co Rd 35-1.6 mi
Turn left onto Co Hwy 44/395th St 1.8 mi
Property on right. See sign

 Listed By:
REMAX Lakes Region

Affinity Real Estate Inc. participates in the Regional Multiple Listing Service of Minnesota, Inc Broker Reciprocity (sm) program, allowing us to display other broker's listings on our website. All properties are subject to prior sale, change or withdrawal.

 **Call Affinity Real Estate**
218-237-3333
info@affinityrealestate.com

Affinity Real Estate - 600 Park Avenue South - Park Rapids MN 56470



website: www.AffinityRealEstate.com | email: info@affinityrealestate.com | office: 218-237-3333 | fax:218-237-3377

Affinity
REAL ESTATE INC

\$150,000
MLS 7055278 Residential
38092 County Highway 44
Richville MN 56576



website: www.AffinityRealEstate.com | email: info@affinityrealestate.com | office: 218-237-3333 | fax:218-237-3377

Affinity
REAL ESTATE INC

\$150,000
MLS 7055278 Residential
38092 County Highway 44
Richville MN 56576



website: www.AffinityRealEstate.com | email: info@affinityrealestate.com | office: 218-237-3333 | fax:218-237-3377



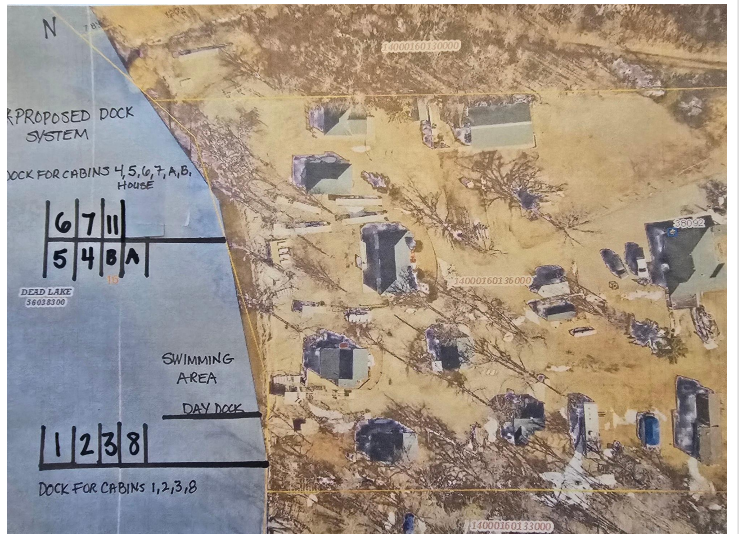
\$150,000
MLS 7055278 Residential
38092 County Highway 44
Richville MN 56576



website: www.AffinityRealEstate.com | email: info@affinityrealestate.com | office: 218-237-3333 | fax:218-237-3377



\$150,000
MLS 7055278 Residential
38092 County Highway 44
Richville MN 56576



website: www.AffinityRealEstate.com | email: info@affinityrealestate.com | office: 218-237-3333 | fax: 218-237-3377



\$150,000
 MLS 7055278 Residential
 38092 County Highway 44
 Richville MN 56576