



MLS 7055288 Residential

**\$334,000**

1,236 sq ft  
3 bedrooms  
1 baths

38092 County Highway 44  
Richville MN 56576

Status: Active

**Description:**

NEWLY RENOVATED YEAR-ROUND HOME ON DEAD LAKE. 3 bedrooms, 1 bath home with new kitchen, massive center island, open floor plan with nice lake views, full basement with laundry and loads of storage. Detached garage, boat slip and plenty of elbow room in this CIC development. Sandy shoreline on Dead Lake one of the area's finest lakes known for recreation and fishing. Come and enjoy lake life without the work--HOA will cover groundskeeping, dock-install and removal. Schedule your showing today.

**Additional Details:**

Year Built	1932
Lot Acres	2.5
Lot Dimensions	common
Garage Stalls	1
School District	1955
Taxes	\$1,784
Taxes with Assessments	\$1,784
Tax Year	2026

**Additional Features:**

**Fuel:** Array **Heat:** Forced Air

**Driving Directions:**

Turn right onto 460th St  
Turn left onto 410th Ave -2.0 mi  
Continue onto Co Hwy 125 -3.0 mi  
Turn right onto MN-108 W -3.9 mi  
Turn left onto 1st Ave N-0.3 mi  
Turn right onto Co Rd 35/Main St  
Continue to follow Co Rd 35-1.6 mi  
Turn left onto Co Hwy 44/395th St 1.8 mi  
Property on right. See sign



Listed By:  
REMAX Lakes Region

Affinity Real Estate Inc. participates in the Regional Multiple Listing Service of Minnesota, Inc Broker Reciprocity (sm) program, allowing us to display other broker's listings on our website. All properties are subject to prior sale, change or withdrawal.



Call Affinity Real Estate

**218-237-3333**

[info@affinityrealestate.com](mailto:info@affinityrealestate.com)



Affinity Real Estate - 600 Park Avenue South - Park Rapids MN 56470



website: [www.AffinityRealEstate.com](http://www.AffinityRealEstate.com) | email: [info@affinityrealestate.com](mailto:info@affinityrealestate.com) | office: 218-237-3333 | fax:218-237-3377



**\$334,000**  
MLS 7055288 Residential  
38092 County Highway 44  
Richville MN 56576



website: [www.AffinityRealEstate.com](http://www.AffinityRealEstate.com) | email: [info@affinityrealestate.com](mailto:info@affinityrealestate.com) | office: 218-237-3333 | fax: 218-237-3377



**\$334,000**  
MLS 7055288 Residential  
38092 County Highway 44  
Richville MN 56576



website: [www.AffinityRealEstate.com](http://www.AffinityRealEstate.com) | email: [info@affinityrealestate.com](mailto:info@affinityrealestate.com) | office: 218-237-3333 | fax:218-237-3377



**\$334,000**  
MLS 7055288 Residential  
38092 County Highway 44  
Richville MN 56576



website: [www.AffinityRealEstate.com](http://www.AffinityRealEstate.com) | email: [info@affinityrealestate.com](mailto:info@affinityrealestate.com) | office: 218-237-3333 | fax: 218-237-3377

**Affinity**  
REAL ESTATE INC

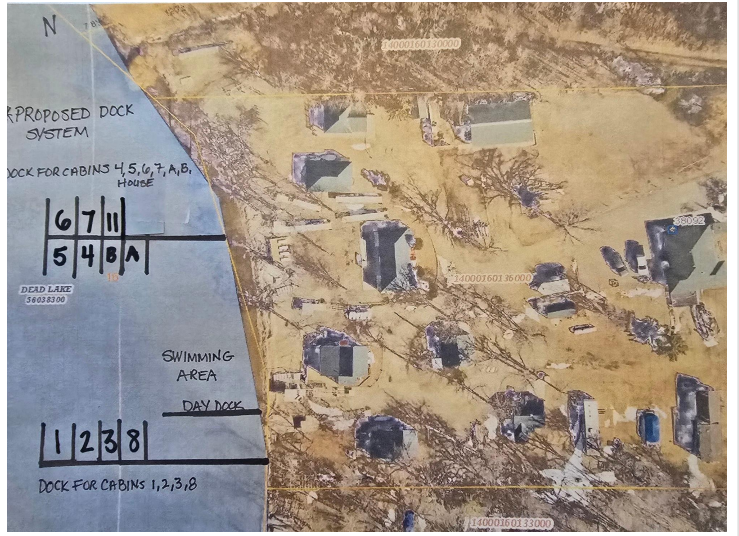
**\$334,000**  
MLS 7055288 Residential  
38092 County Highway 44  
Richville MN 56576



website: [www.AffinityRealEstate.com](http://www.AffinityRealEstate.com) | email: [info@affinityrealestate.com](mailto:info@affinityrealestate.com) | office: 218-237-3333 | fax:218-237-3377



**\$334,000**  
MLS 7055288 Residential  
38092 County Highway 44  
Richville MN 56576



website: [www.AffinityRealEstate.com](http://www.AffinityRealEstate.com) | email: [info@affinityrealestate.com](mailto:info@affinityrealestate.com) | office: 218-237-3333 | fax: 218-237-3377



**\$334,000**  
 MLS 7055288 Residential  
 38092 County Highway 44  
 Richville MN 56576



website: [www.AffinityRealEstate.com](http://www.AffinityRealEstate.com) | email: [info@affinityrealestate.com](mailto:info@affinityrealestate.com) | office: 218-237-3333 | fax:218-237-3377



**\$334,000**  
MLS 7055288 Residential  
38092 County Highway 44  
Richville MN 56576