



MLS 7055385 Residential

\$599,900

2,800 sq ft
5 bedrooms
3 baths

40776 Mary Lake Road
Emily MN 56447

Status: Coming Soon

Description:

Tucked away in a quiet and peaceful setting, this 5-bedroom, 3-bath home sits on nearly 40 acres with a walkout basement and a patio with fire ring—and even a perfect spot just waiting for a hot tub! The main floor features a spacious living room with gas fireplace, formal dining room, kitchen with center island, and a primary suite with newly updated shower, plus two additional bedrooms and a full bath. The lower level offers a large family room with wet bar, two additional bedrooms, and a full bath. Outside you'll find a 3-car attached garage and a brand new 36x56 pole barn. Just minutes from hundreds of acres of Duck Lake Wildlife Management Area and four-wheeler trails—a true sportsman's paradise!

Additional Details:

Year Built	1998
Lot Acres	39.91
Lot Dimensions	1321x1033x1319x1325
Garage Stalls	3
School District	904
Taxes	\$1,009
Taxes with Assessments	\$1,034
Tax Year	2026

Additional Features:

Basement: Block, Drain Tiled, Egress Window(s), Finished, Full, Walkout **Fuel:** Array **Garage:** 3 **Heat:** Forced Air **Sewer:** Tank with Drainage Field **Water:** 4-Inch Submersible, Drilled **Air Conditioning:** Central Air

Driving Directions:

From Crosby North on highway 6 in Emily go right on hwy 1 Right on Mary lake Road to property.



Listed By:
Coldwell Banker Crown Realtors

Affinity Real Estate Inc. participates in the Regional Multiple Listing Service of Minnesota, Inc Broker Reciprocity (sm) program, allowing us to display other broker's listings on our website. All properties are subject to prior sale, change or withdrawal.



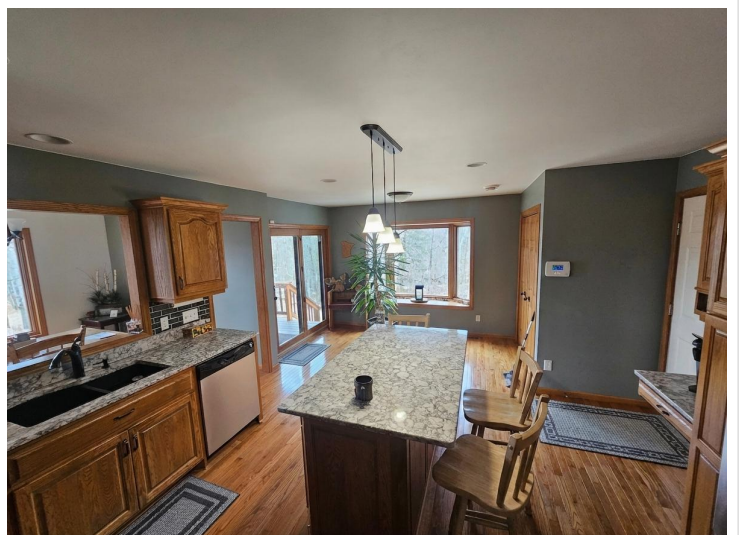
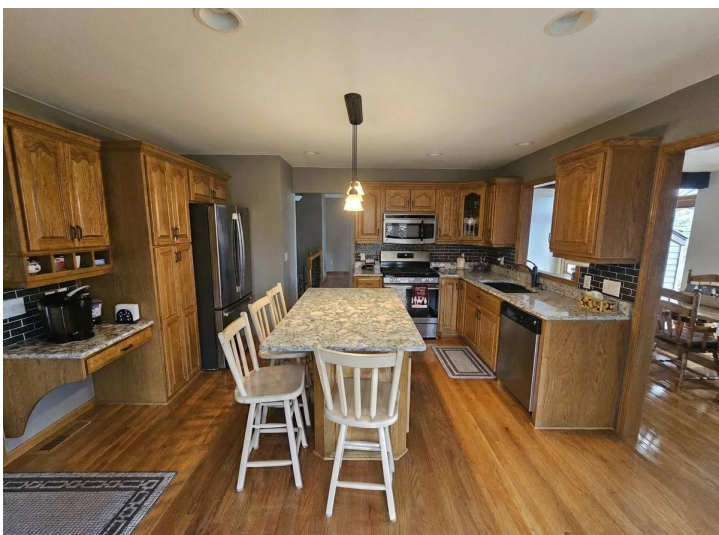
Call Affinity Real Estate

218-237-3333

info@affinityrealestate.com



Affinity Real Estate - 600 Park Avenue South - Park Rapids MN 56470



website: www.AffinityRealEstate.com | email: info@affinityrealestate.com | office: 218-237-3333 | fax:218-237-3377

Affinity
REAL ESTATE INC

\$599,900
MLS 7055385 Residential
40776 Mary Lake Road
Emily MN 56447



website: www.AffinityRealEstate.com | email: info@affinityrealestate.com | office: 218-237-3333 | fax:218-237-3377

Affinity
REAL ESTATE INC

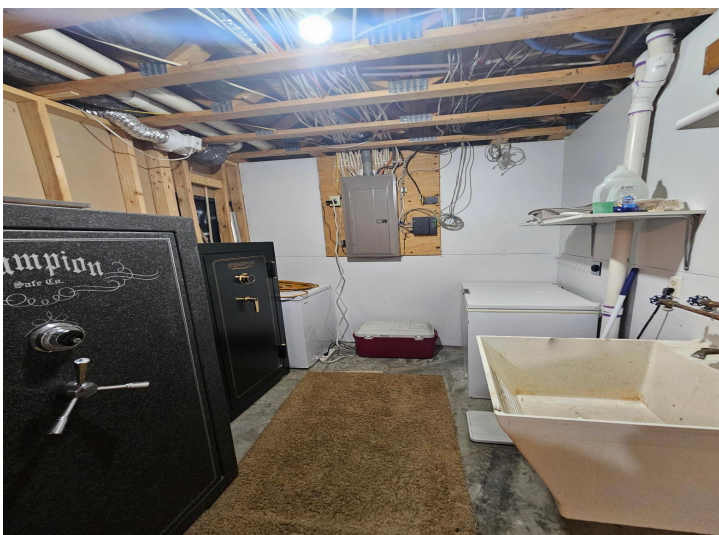
\$599,900
MLS 7055385 Residential
40776 Mary Lake Road
Emily MN 56447



website: www.AffinityRealEstate.com | email: info@affinityrealestate.com | office: 218-237-3333 | fax:218-237-3377

Affinity
REAL ESTATE INC

\$599,900
MLS 7055385 Residential
40776 Mary Lake Road
Emily MN 56447



website: www.AffinityRealEstate.com | email: info@affinityrealestate.com | office: 218-237-3333 | fax: 218-237-3377

Affinity
REAL ESTATE INC

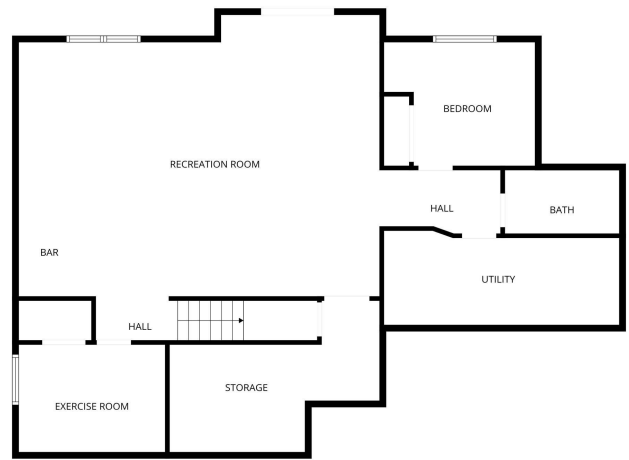
\$599,900
MLS 7055385 Residential
40776 Mary Lake Road
Emily MN 56447



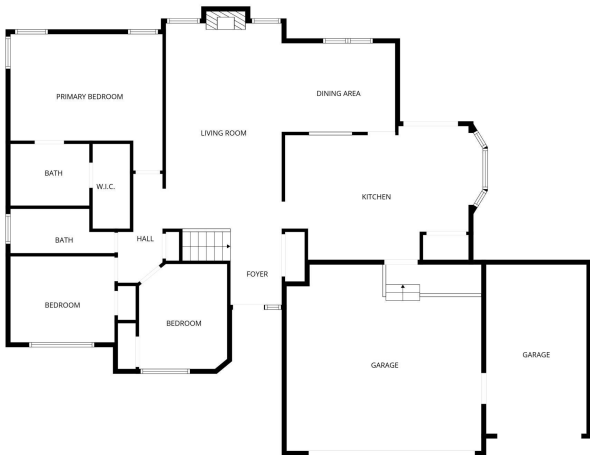
website: www.AffinityRealEstate.com | email: info@affinityrealestate.com | office: 218-237-3333 | fax:218-237-3377



\$599,900
MLS 7055385 Residential
40776 Mary Lake Road
Emily MN 56447



FLOOR PLAN CREATED BY CUBICASA APP. MEASUREMENTS DEEMED HIGHLY RELIABLE BUT NOT GUARANTEED.



FLOOR PLAN CREATED BY CUBICASA APP. MEASUREMENTS DEEMED HIGHLY RELIABLE BUT NOT GUARANTEED.

website: www.AffinityRealEstate.com | email: info@affinityrealestate.com | office: 218-237-3333 | fax: 218-237-3377



\$599,900
 MLS 7055385 Residential
 40776 Mary Lake Road
 Emily MN 56447