



MLS 7055510 Residential

\$329,900

2,070 sq ft
4 bedrooms
2 baths

2030 Crestview Lane
Brainerd MN 56401

Status: Active

Description:

Perfectly located buffalo hills neighborhood 4 bedroom home. New carpet and kitchen appliances. Cozy basement with wood fireplace and bar entertaining area. Screened porch area off of main living which catches a perfect breeze. Spacious backyard with mature trees. Walking trails and parks near by. Come look today!

Additional Details:

Year Built	1977
Lot Acres	13286
Lot Dimensions	140x95
Garage Stalls	2
School District	896
Taxes	\$3,046
Taxes with Assessments	\$3,046
Tax Year	2025

Additional Features:

Basement: Block, Finished **Fuel:** Array **Garage:** 2 **Heat:** Forced Air **Sewer:** City Sewer/Connected **Water:** City Water/Connected **Air Conditioning:** Central Air

Driving Directions:

371 and Buffalo Hills Lane, go west on Buffalo Hills Lane to North on Crestview Lane to 2030 Crestview Lane on the west (left) side.



Listed By:
LPT Realty, LLC.

Affinity Real Estate Inc. participates in the Regional Multiple Listing Service of Minnesota, Inc Broker Reciprocity (sm) program, allowing us to display other broker's listings on our website. All properties are subject to prior sale, change or withdrawal.



Call Affinity Real Estate

218-237-3333

info@affinityrealestate.com



Affinity Real Estate - 600 Park Avenue South - Park Rapids MN 56470



website: www.AffinityRealEstate.com | email: info@affinityrealestate.com | office: 218-237-3333 | fax:218-237-3377

Affinity
REAL ESTATE INC

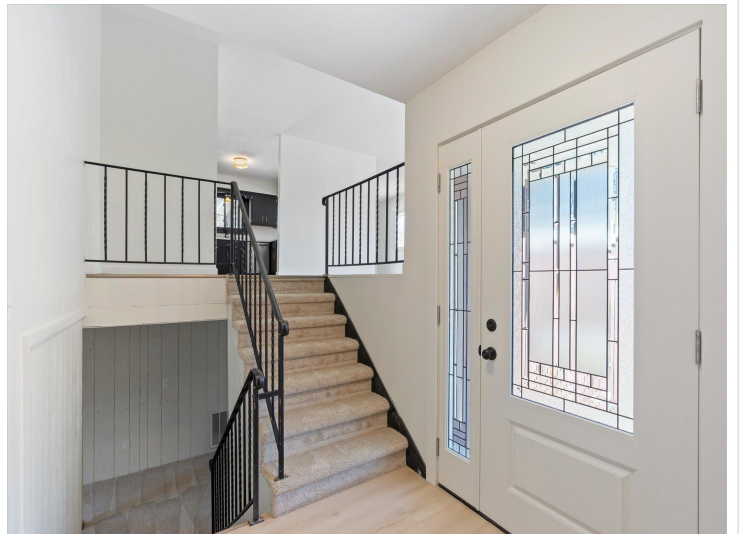
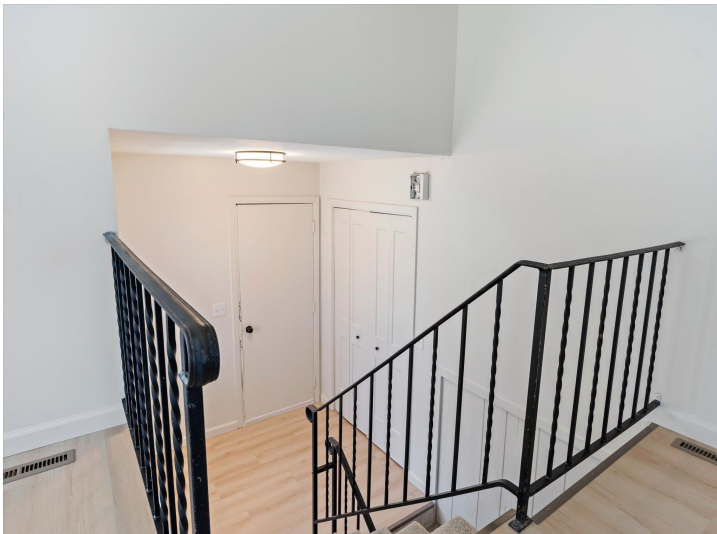
\$329,900
MLS 7055510 Residential
2030 Crestview Lane
Brainerd MN 56401



website: www.AffinityRealEstate.com | email: info@affinityrealestate.com | office: 218-237-3333 | fax:218-237-3377



\$329,900
MLS 7055510 Residential
2030 Crestview Lane
Brainerd MN 56401



website: www.AffinityRealEstate.com | email: info@affinityrealestate.com | office: 218-237-3333 | fax:218-237-3377



\$329,900
MLS 7055510 Residential
2030 Crestview Lane
Brainerd MN 56401



website: www.AffinityRealEstate.com | email: info@affinityrealestate.com | office: 218-237-3333 | fax: 218-237-3377

Affinity
REAL ESTATE INC

\$329,900
MLS 7055510 Residential
2030 Crestview Lane
Brainerd MN 56401



website: www.AffinityRealEstate.com | email: info@affinityrealestate.com | office: 218-237-3333 | fax:218-237-3377



\$329,900
MLS 7055510 Residential
2030 Crestview Lane
Brainerd MN 56401