



MLS 7055543 Land

**\$148,500**

80 Acres  
Raw Land

40732 650th Street  
Swatara MN 55785

Status: Active

**Description:**

80 acres of prime recreational land near Swatara in Aitkin County. This diverse property features road frontage with electric and fiber optic available along the road, making it an excellent candidate for your hunting base camp or future getaway. The land offers a beautiful mix of birch and pine, along with both high and low ground that creates outstanding wildlife habitat.

A creek flows through the property, serving as a tributary to the Willow River located about one mile south. A bridge provides easy crossing, and a man-made pond enhances both wildlife appeal and scenic value. The property is well set up for hunting with two elevated enclosed blinds, established food plot, and a trail system throughout. Whitetails, turkey, bear, and grouse are all common in the area.


Improvements include a 9x13 bunkhouse and additional storage shed, creating an excellent base camp setup. The land borders more than 3,500 acres of Hill River State Forest and Minnesota State Forest land, offering direct access to expansive public hunting and recreation. The Soo Line UTV and snowmobile trail is just two miles away for four-season enjoyment.

Conveniently located approximately 2.5 hours from the Twin Cities metro, this is a turnkey recreational property with outstanding hunting and trail access.

**Additional Details:**

Lot Acres	80
Lot Dimensions	1320x2640
School District	959
Taxes	\$298
Taxes with Assessments	\$298
Tax Year	2026

**Additional Features:**

 Listed By:  
Timber Ghost Realty, LLC  
on Hwy 200, South on Osprey Avenue, West on 650th Street

Affinity Real Estate Inc. participates in the Regional Multiple Listing Service of Minnesota, Inc Broker Reciprocity (sm) program, allowing us to display other broker's listings on our website. All properties are subject to prior sale, change or withdrawal.



Call Affinity Real Estate  
**218-237-3333**  
[info@affinityrealestate.com](mailto:info@affinityrealestate.com)



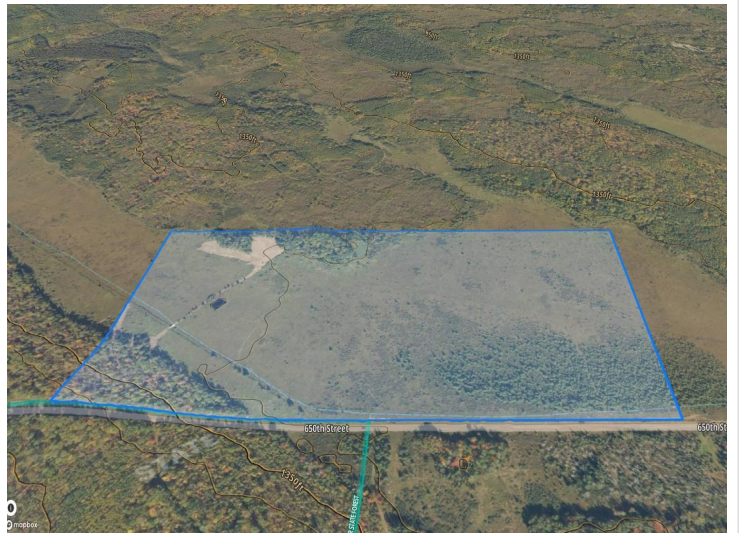
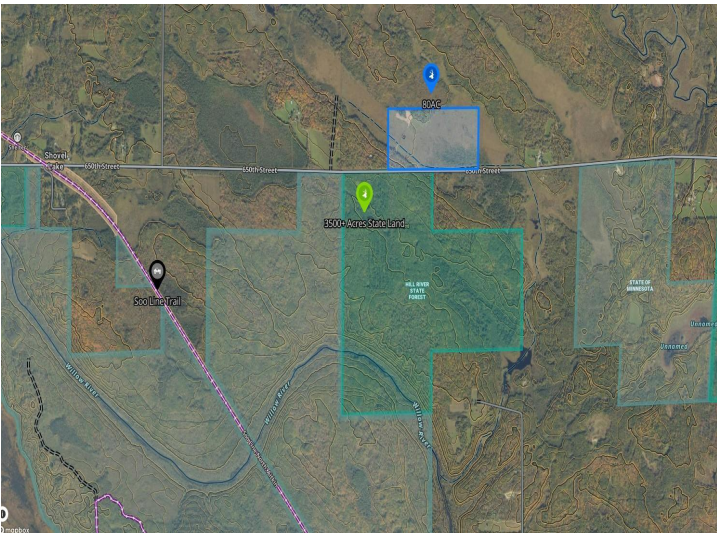
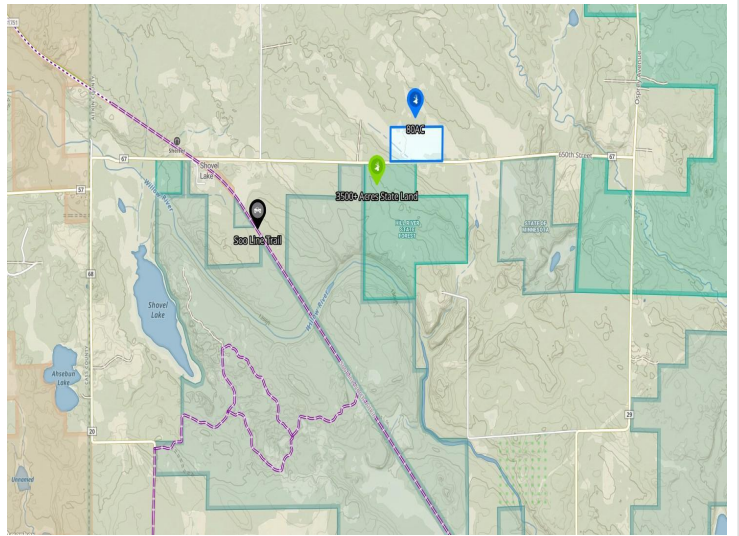
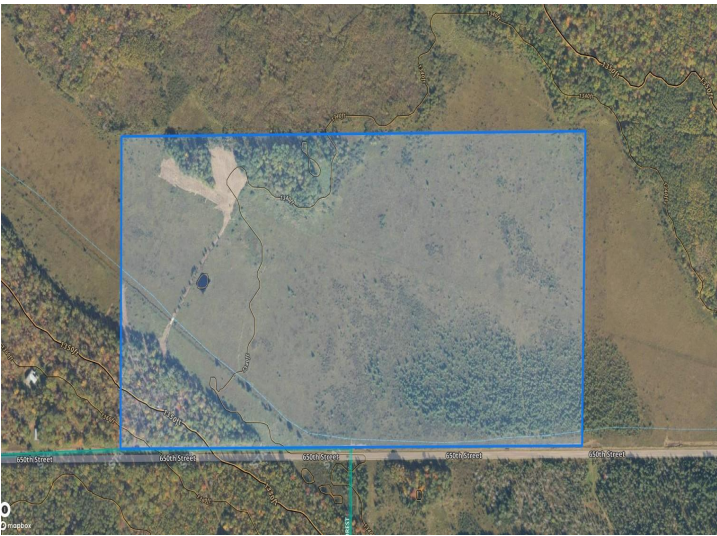
Affinity Real Estate - 600 Park Avenue South - Park Rapids MN 56470



website: [www.AffinityRealEstate.com](http://www.AffinityRealEstate.com) | email: [info@affinityrealestate.com](mailto:info@affinityrealestate.com) | office: 218-237-3333 | fax:218-237-3377



**\$148,500**  
MLS 7055543 Land  
40732 650th Street  
Swatara MN 55785



website: [www.AffinityRealEstate.com](http://www.AffinityRealEstate.com) | email: [info@affinityrealestate.com](mailto:info@affinityrealestate.com) | office: 218-237-3333 | fax:218-237-3377



**\$148,500**  
MLS 7055543 Land  
40732 650th Street  
Swatara MN 55785



website: [www.AffinityRealEstate.com](http://www.AffinityRealEstate.com) | email: [info@affinityrealestate.com](mailto:info@affinityrealestate.com) | office: 218-237-3333 | fax:218-237-3377



**\$148,500**  
MLS 7055543 Land  
40732 650th Street  
Swatara MN 55785



website: [www.AffinityRealEstate.com](http://www.AffinityRealEstate.com) | email: [info@affinityrealestate.com](mailto:info@affinityrealestate.com) | office: 218-237-3333 | fax:218-237-3377



**\$148,500**  
MLS 7055543 Land  
40732 650th Street  
Swatara MN 55785