



MLS 7055561 Residential

\$369,900

1,382 sq ft
3 bedrooms
2 baths

40409 Pinto Drive
Browerville MN 56438

Status: Active

Description:

Welcome to 40409 Pinto Drive, a 3 bedroom 2 bath lakehome situated on 1.24 acres and offering 155 feet of waterfront on Fawn Lake of Sylvan Shores. Not a detail was missed in the renovation of this one-level home. A divided floor plan affords for plenty of space for entertaining, but space to retreat to a private primary suite. The living room spans the lakeside of the home, anchored by a gas fireplace and offering spectacular lake views. Head outside to an entertainer's dream space! A tiered deck, screened in gazebo and gradual stairs to the large lakeside yard. A stamped concrete firepit, private sand beach and a new dock system await at the waters edge. Plenty of space to store all your toys in the detached 2-stall garage and lakeside shed, plus a storage space in the partial basement. Association access to the Sylvan Shores Community Center where you have shared access to a pool, private boat launch, sport courts and more! This is the lake retreat you've been waiting for!

Additional Details:

Year Built	1989
Lot Acres	1.238
Lot Dimensions	155xIRR
Garage Stalls	2
School District	2170
Taxes	\$2,324
Taxes with Assessments	\$2,324
Tax Year	2025

Additional Features:

Basement: Partial, Storage Space **Fuel:** Array **Garage:** 2 **Heat:** Forced Air, Fireplace(s) **Sewer:** Private Sewer, Tank with Drainage Field
Water: Drilled, Private, Well **Air Conditioning:** Central Air

Driving Directions:

From Hwy 10, head west on CR-7, turn left onto CR-26, turn left onto Pinto Drive, property on the right.



Listed By:
RE/MAX Results - Nisswa

Affinity Real Estate Inc. participates in the Regional Multiple Listing Service of Minnesota, Inc Broker Reciprocity (sm) program, allowing us to display other broker's listings on our website. All properties are subject to prior sale, change or withdrawal.



Call Affinity Real Estate

218-237-3333

info@affinityrealestate.com



Affinity Real Estate - 600 Park Avenue South - Park Rapids MN 56470



website: www.AffinityRealEstate.com | email: info@affinityrealestate.com | office: 218-237-3333 | fax:218-237-3377



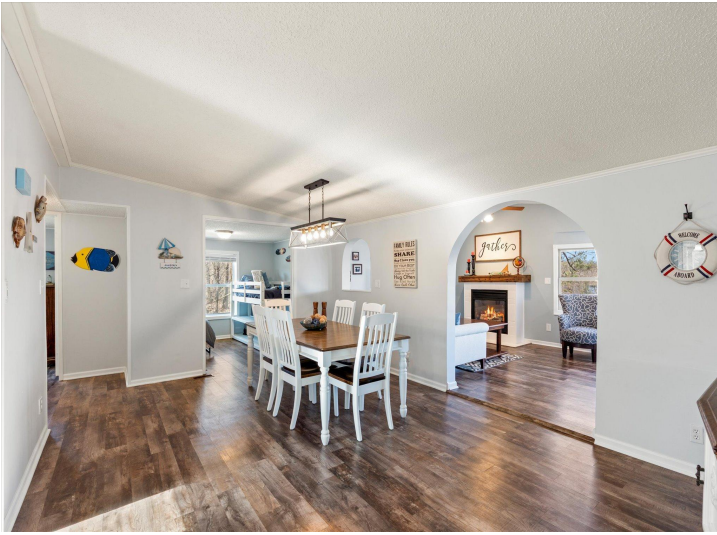
\$369,900
MLS 7055561 Residential
40409 Pinto Drive
Browerville MN 56438



website: www.AffinityRealEstate.com | email: info@affinityrealestate.com | office: 218-237-3333 | fax:218-237-3377

Affinity
REAL ESTATE INC

\$369,900
MLS 7055561 Residential
40409 Pinto Drive
Browerville MN 56438



website: www.AffinityRealEstate.com | email: info@affinityrealestate.com | office: 218-237-3333 | fax: 218-237-3377

Affinity
REAL ESTATE INC

\$369,900
MLS 7055561 Residential
40409 Pinto Drive
Browerville MN 56438



website: www.AffinityRealEstate.com | email: info@affinityrealestate.com | office: 218-237-3333 | fax:218-237-3377

Affinity
REAL ESTATE INC

\$369,900
MLS 7055561 Residential
40409 Pinto Drive
Browerville MN 56438



website: www.AffinityRealEstate.com | email: info@affinityrealestate.com | office: 218-237-3333 | fax:218-237-3377

Affinity
REAL ESTATE INC

\$369,900
MLS 7055561 Residential
40409 Pinto Drive
Browerville MN 56438



website: www.AffinityRealEstate.com | email: info@affinityrealestate.com | office: 218-237-3333 | fax:218-237-3377



\$369,900
MLS 7055561 Residential
40409 Pinto Drive
Browerville MN 56438



website: www.AffinityRealEstate.com | email: info@affinityrealestate.com | office: 218-237-3333 | fax:218-237-3377



\$369,900
MLS 7055561 Residential
40409 Pinto Drive
Browerville MN 56438