



MLS 7055724 Residential

\$269,000

1,188 sq ft
2 bedrooms
1 baths

28660 County Highway 145
Battle Lake MN 56515

Status: Active

Description:

Experience the ultimate lake lifestyle in this charming, turnkey year-round cabin featuring views of Ottertail Lake. This beautifully maintained 2-bedroom, 1-bathroom home is truly move-in ready, boasting a host of recent updates and remarkably efficient, low-cost utilities. The interior offers a comfortable layout with central air for those warm summer days, while the spacious three-season porch provides a relaxing space to enjoy the surroundings. Storage is abundant throughout the property, complemented by the convenience of an attached garage for your vehicle and gear. Situated in a prime location, you are just a short distance from local favorites like Zorbaz and Beach Bums, placing dining and entertainment right at your fingertips. With boat slip opportunities available nearby, accessing the water is easy and convenient. Don't miss this opportunity to own an updated, low-maintenance retreat in a highly sought-after location!

Additional Details:

Year Built	1945
Lot Acres	0.137
Lot Dimensions	50x92
Garage Stalls	2
School District	1941
Taxes	\$1,024
Taxes with Assessments	\$1,024
Tax Year	2025

Additional Features:

Basement: Block, Partially Finished, Storage Space **Fuel:** Array **Garage:** 2 **Heat:** Baseboard, Forced Air **Sewer:** Tank with Drainage Field
Water: Sand Point **Air Conditioning:** Central Air

Driving Directions:

North of Corner Store/Beach Bums 1/2 Mile on east side of road.



Listed By:
Real Broker, LLC

Affinity Real Estate Inc. participates in the Regional Multiple Listing Service of Minnesota, Inc Broker Reciprocity (sm) program, allowing us to display other broker's listings on our website. All properties are subject to prior sale, change or withdrawal.



Call Affinity Real Estate

218-237-3333

info@affinityrealestate.com



Affinity Real Estate - 600 Park Avenue South - Park Rapids MN 56470



website: www.AffinityRealEstate.com | email: info@affinityrealestate.com | office: 218-237-3333 | fax:218-237-3377

Affinity
REAL ESTATE INC

\$269,000
MLS 7055724 Residential
28660 County Highway 145
Battle Lake MN 56515



website: www.AffinityRealEstate.com | email: info@affinityrealestate.com | office: 218-237-3333 | fax: 218-237-3377



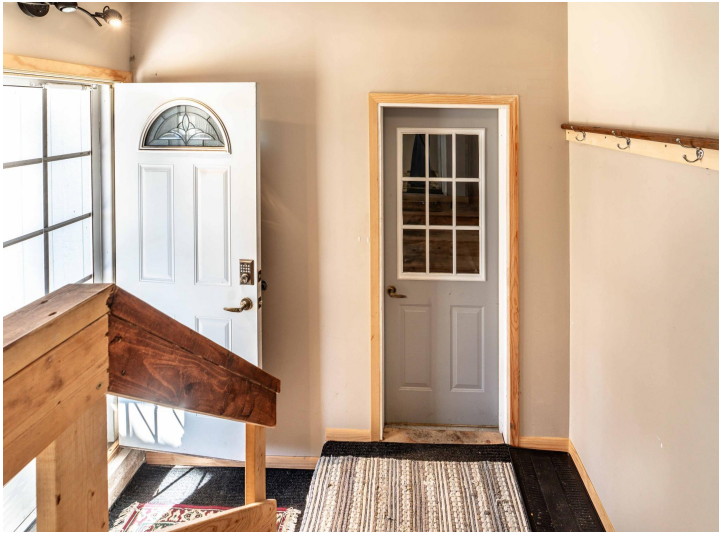
\$269,000
MLS 7055724 Residential
28660 County Highway 145
Battle Lake MN 56515



website: www.AffinityRealEstate.com | email: info@affinityrealestate.com | office: 218-237-3333 | fax:218-237-3377

Affinity
REAL ESTATE INC

\$269,000
MLS 7055724 Residential
28660 County Highway 145
Battle Lake MN 56515



website: www.AffinityRealEstate.com | email: info@affinityrealestate.com | office: 218-237-3333 | fax: 218-237-3377

Affinity
REAL ESTATE INC

\$269,000
MLS 7055724 Residential
28660 County Highway 145
Battle Lake MN 56515



website: www.AffinityRealEstate.com | email: info@affinityrealestate.com | office: 218-237-3333 | fax: 218-237-3377

Affinity
REAL ESTATE INC

\$269,000
MLS 7055724 Residential
28660 County Highway 145
Battle Lake MN 56515



website: www.AffinityRealEstate.com | email: info@affinityrealestate.com | office: 218-237-3333 | fax: 218-237-3377

Affinity
REAL ESTATE INC

\$269,000
MLS 7055724 Residential
28660 County Highway 145
Battle Lake MN 56515



website: www.AffinityRealEstate.com | email: info@affinityrealestate.com | office: 218-237-3333 | fax:218-237-3377

Affinity
REAL ESTATE INC

\$269,000
MLS 7055724 Residential
28660 County Highway 145
Battle Lake MN 56515



website: www.AffinityRealEstate.com | email: info@affinityrealestate.com | office: 218-237-3333 | fax: 218-237-3377

Affinity
REAL ESTATE INC

\$269,000
MLS 7055724 Residential
28660 County Highway 145
Battle Lake MN 56515



website: www.AffinityRealEstate.com | email: info@affinityrealestate.com | office: 218-237-3333 | fax:218-237-3377

Affinity
REAL ESTATE INC

\$269,000
MLS 7055724 Residential
28660 County Highway 145
Battle Lake MN 56515



website: www.AffinityRealEstate.com | email: info@affinityrealestate.com | office: 218-237-3333 | fax:218-237-3377



\$269,000
MLS 7055724 Residential
28660 County Highway 145
Battle Lake MN 56515