



MLS 7055808 Land

**\$225,000**

5.99 Acres  
Raw Land

19555 County Road 452  
Deer River MN 56636

Status: Active

**Description:**

Discover the perfect blend of privacy and lake living with this beautiful 5.99-acre property on Willow Lake in Deer River. Featuring an accessible shoreline, this property makes it easy to enjoy everything lake life has to offer—from fishing and boating to relaxing by the water's edge. The land is richly wooded, offering natural beauty and seclusion, while already equipped with key improvements including electricity, a private well, and private septic system—making it ready for your vision, whether that's a seasonal getaway or future home build. Additional features include wood fencing for added privacy, a convenient boathouse for lake gear storage, and dedicated parking space for a camper. This is a rare opportunity to own a spacious, ready-to-enjoy lakeside property in a peaceful Northwoods setting.

**Additional Details:**

Lot Acres	5.99
Lot Dimensions	198x1332x312x138x118x915
School District	1410
Taxes	\$868
Taxes with Assessments	\$868
Tax Year	2026

**Additional Features:**

**Driving Directions:**

Continue on Great River Rd/Itasca County Rd 63 to Torrey Township, Turn left onto Itasca County Rd 452, Destination will be on the right



Listed By:  
GRAND PROPERTIES REAL ESTATE

Affinity Real Estate Inc. participates in the Regional Multiple Listing Service of Minnesota, Inc Broker Reciprocity (sm) program, allowing us to display other broker's listings on our website. All properties are subject to prior sale, change or withdrawal.



Call Affinity Real Estate

**218-237-3333**

[info@affinityrealestate.com](mailto:info@affinityrealestate.com)



Affinity Real Estate - 600 Park Avenue South - Park Rapids MN 56470



website: [www.AffinityRealEstate.com](http://www.AffinityRealEstate.com) | email: [info@affinityrealestate.com](mailto:info@affinityrealestate.com) | office: 218-237-3333 | fax:218-237-3377



**\$225,000**  
MLS 7055808 Land  
19555 County Road 452  
Deer River MN 56636



website: [www.AffinityRealEstate.com](http://www.AffinityRealEstate.com) | email: [info@affinityrealestate.com](mailto:info@affinityrealestate.com) | office: 218-237-3333 | fax:218-237-3377



**\$225,000**  
MLS 7055808 Land  
19555 County Road 452  
Deer River MN 56636



website: [www.AffinityRealEstate.com](http://www.AffinityRealEstate.com) | email: [info@affinityrealestate.com](mailto:info@affinityrealestate.com) | office: 218-237-3333 | fax:218-237-3377



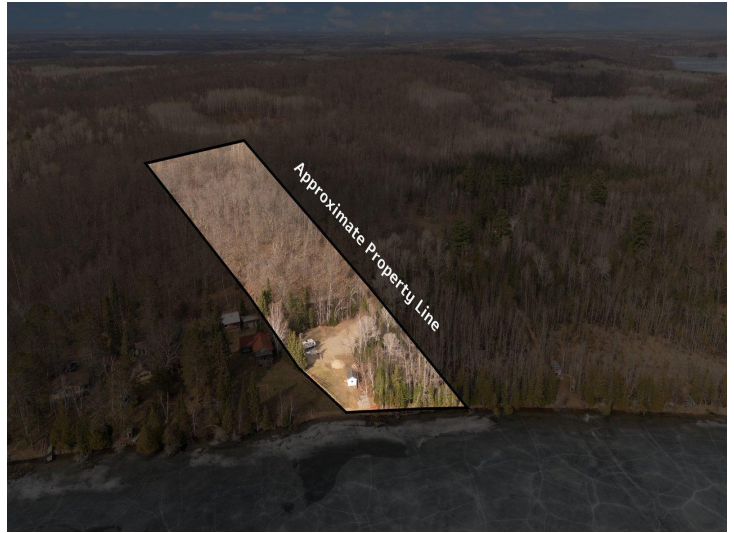
**\$225,000**  
MLS 7055808 Land  
19555 County Road 452  
Deer River MN 56636



website: [www.AffinityRealEstate.com](http://www.AffinityRealEstate.com) | email: [info@affinityrealestate.com](mailto:info@affinityrealestate.com) | office: 218-237-3333 | fax:218-237-3377



**\$225,000**  
MLS 7055808 Land  
19555 County Road 452  
Deer River MN 56636



website: [www.AffinityRealEstate.com](http://www.AffinityRealEstate.com) | email: [info@affinityrealestate.com](mailto:info@affinityrealestate.com) | office: 218-237-3333 | fax:218-237-3377



**\$225,000**  
MLS 7055808 Land  
19555 County Road 452  
Deer River MN 56636



website: [www.AffinityRealEstate.com](http://www.AffinityRealEstate.com) | email: [info@affinityrealestate.com](mailto:info@affinityrealestate.com) | office: 218-237-3333 | fax:218-237-3377



**\$225,000**  
MLS 7055808 Land  
19555 County Road 452  
Deer River MN 56636