



MLS 7055835 Residential

**\$749,900**

3,264 sq ft  
4 bedrooms  
3 baths

2523 River Glen Lane  
Pillager MN 56473

Status: Coming Soon



**Description:**

Enjoy waterfront living on the Crow Wing River with this beautifully built 2022 home, offering 4 bedrooms, 3 bathrooms, and 3,264 finished square feet, perfectly situated on a private 3-acre parcel. Whether you're boating, fishing, swimming, or simply relaxing by the water, this property delivers year-round recreation right from your own dock—featuring a hard sand bottom and an excellent area for swimming, along with known excellent fishing! Even better, the river is navigable by boat all the way to the Pillager Dam or into the Gull River, providing miles of scenic water to explore. This thoughtfully designed home features LP siding with attractive stone accents, a two-stall attached garage with in-floor heat, and an additional two-stall detached garage—ideal for storage, toys, or a workshop. Inside, you'll find a spacious layout highlighted by Patnode's custom cabinets, a walk-in pantry, and quality finishes throughout. The primary suite offers a private full bath with a relaxing soaker tub, linen cabinets, and a walk-in closet. The fully finished basement provides additional living space perfect for entertaining or everyday comfort, along with a utility room that includes an additional laundry area roughed in for future convenience. Step outside to enjoy stamped concrete patios and a lawn irrigation system, ideal for maintaining the beautifully landscaped grounds while taking in the peaceful setting and river views. Tucked away in a quiet setting yet conveniently located just minutes from Pillager and Baxter, this is a rare opportunity to own newer construction on the Crow Wing River. A hard-to-find combination of acreage, privacy, and true navigable waterfront—don't miss it!

**Additional Details:**

|                        |         |
|------------------------|---------|
| Year Built             | 2022    |
| Lot Acres              | 3.1     |
| Lot Dimensions         | Irreg   |
| Garage Stalls          | 4       |
| School District        | 726     |
| Taxes                  | \$4,014 |
| Taxes with Assessments | \$4,080 |
| Tax Year               | 2025    |

**Additional Features:**

**Basement:** Finished, Full **Fuel:** Array **Garage:** 4 **Heat:** Forced Air, In-Floor Heating **Sewer:** Tank with Drainage Field **Water:** Well Air

Air Listed By:  
NextHome Horizons

Call Affinity Real Estate  
**218-237-3333**  
info@affinityrealestate.com



Affinity Real Estate - 600 Park Avenue South - Park Rapids MN 56470



website: [www.AffinityRealEstate.com](http://www.AffinityRealEstate.com) | email: [info@affinityrealestate.com](mailto:info@affinityrealestate.com) | office: 218-237-3333 | fax:218-237-3377



**\$749,900**  
MLS 7055835 Residential  
2523 River Glen Lane  
Pillager MN 56473



website: [www.AffinityRealEstate.com](http://www.AffinityRealEstate.com) | email: [info@affinityrealestate.com](mailto:info@affinityrealestate.com) | office: 218-237-3333 | fax: 218-237-3377

**Affinity**  
REAL ESTATE INC

**\$749,900**  
MLS 7055835 Residential  
2523 River Glen Lane  
Pillager MN 56473



website: [www.AffinityRealEstate.com](http://www.AffinityRealEstate.com) | email: [info@affinityrealestate.com](mailto:info@affinityrealestate.com) | office: 218-237-3333 | fax: 218-237-3377



**\$749,900**  
MLS 7055835 Residential  
2523 River Glen Lane  
Pillager MN 56473



website: [www.AffinityRealEstate.com](http://www.AffinityRealEstate.com) | email: [info@affinityrealestate.com](mailto:info@affinityrealestate.com) | office: 218-237-3333 | fax:218-237-3377

**Affinity**  
REAL ESTATE INC

**\$749,900**  
MLS 7055835 Residential  
2523 River Glen Lane  
Pillager MN 56473



website: [www.AffinityRealEstate.com](http://www.AffinityRealEstate.com) | email: [info@affinityrealestate.com](mailto:info@affinityrealestate.com) | office: 218-237-3333 | fax: 218-237-3377

**Affinity**  
REAL ESTATE INC

**\$749,900**  
MLS 7055835 Residential  
2523 River Glen Lane  
Pillager MN 56473



website: [www.AffinityRealEstate.com](http://www.AffinityRealEstate.com) | email: [info@affinityrealestate.com](mailto:info@affinityrealestate.com) | office: 218-237-3333 | fax: 218-237-3377

**Affinity**  
REAL ESTATE INC

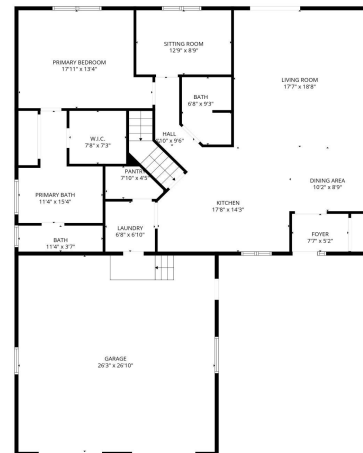
**\$749,900**  
MLS 7055835 Residential  
2523 River Glen Lane  
Pillager MN 56473



website: [www.AffinityRealEstate.com](http://www.AffinityRealEstate.com) | email: [info@affinityrealestate.com](mailto:info@affinityrealestate.com) | office: 218-237-3333 | fax:218-237-3377



**\$749,900**  
MLS 7055835 Residential  
2523 River Glen Lane  
Pillager MN 56473



website: [www.AffinityRealEstate.com](http://www.AffinityRealEstate.com) | email: [info@affinityrealestate.com](mailto:info@affinityrealestate.com) | office: 218-237-3333 | fax: 218-237-3377



**\$749,900**  
 MLS 7055835 Residential  
 2523 River Glen Lane  
 Pillager MN 56473



website: [www.AffinityRealEstate.com](http://www.AffinityRealEstate.com) | email: [info@affinityrealestate.com](mailto:info@affinityrealestate.com) | office: 218-237-3333 | fax:218-237-3377



**\$749,900**  
MLS 7055835 Residential  
2523 River Glen Lane  
Pillager MN 56473