



MLS 7056191 Residential

\$526,511

2,678 sq ft
5 bedrooms
3 baths

9201 Viking Street
Brainerd MN 56401

Status: Active

Description:

UNDER CONSTRUCTION Welcome to the "Retreat XL " plan, a blend of comfort and luxury. This home offers the flexibility of 3-5 bedrooms, 2-3 baths, and a spacious 3-stall garage, designed to accommodate your lifestyle seamlessly. Convenience meets luxury with a generous master walk-in closet. Admire the craftsmanship of custom cabinets and stainless appliances. Unwind or entertain in the generously sized family room, a versatile space for all occasions. At Thomas Allen Homes, we believe that crafting your dream home should be a thrilling and seamless experience. Our commitment is to ensure your journey is not just stress-free but exciting. With a range of choice lots in prime locations, the perfect setting for your new home awaits.

Additional Details:

Year Built	2026
Lot Acres	0.24
Lot Dimensions	75x144x75x136
Garage Stalls	3
School District	896
Taxes	\$238
Taxes with Assessments	\$238
Tax Year	2025

Additional Features:

Fuel: Array **Heat:** Forced Air

Driving Directions:

FROM Brainerd, North past Ice Arena on Riverside to left on Beaver Dam Rd to right on Northtown St to right on Warrior to left on Viking St. FROM 371, East on Wise Rd (Cty 49) to Right on Beaver Dam Rd to left on Northtown Street to right on Warrior to left on Viking St.



Listed By:
Edina Realty, Inc.

Affinity Real Estate Inc. participates in the Regional Multiple Listing Service of Minnesota, Inc Broker Reciprocity (sm) program, allowing us to display other broker's listings on our website. All properties are subject to prior sale, change or withdrawal.



Call Affinity Real Estate

218-237-3333

info@affinityrealestate.com



Affinity Real Estate - 600 Park Avenue South - Park Rapids MN 56470



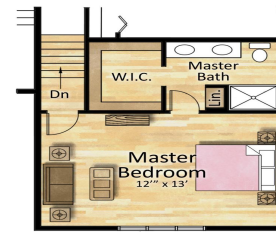
Lower Floor Plan

ResidentialRendering.com



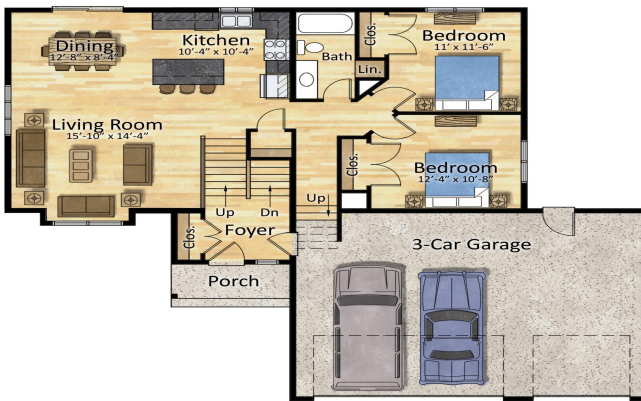
Lower Floor Plan

ResidentialRendering.com



Upper Floor Plan

ResidentialRendering.com



First Floor Plan

ResidentialRendering.com

website: www.AffinityRealEstate.com | email: info@affinityrealestate.com | office: 218-237-3333 | fax: 218-237-3377



\$526,511
 MLS 7056191 Residential
 9201 Viking Street
 Brainerd MN 56401