



MLS 7056240 Residential

\$340,000

540 sq ft
1 bedrooms
1 baths

22938 Portage Pass Road
Deerwood MN 56444

Status: Active

Description:

This charming seasonal cabin has been fully renovated! A rare find on the sought-after Crooked Lake Chain ... a short drive to Brainerd/Baxter and only 2 hours from the Twin Cities. Ideally situated between two lakes with over 100ft of beautiful sandy, rip-rapped shoreline on Portage Lake (boat access to Crooked Lake AND Hank Lake). Enjoy the peaceful and private setting of crystal-clear water, southerly exposure, level elevation and panoramic views. Inside you'll notice attention to detail with lots of character, including lots of wood accents throughout and a very nice layout. Even though there is only one bedroom, you will still be able to invite friends and loved ones to come for a visit. The large yard welcomes yard games or space to pitch a few tents! Best of all, after a long day on the lake you'll love to relax around the fire pit or enjoy some family-time on the lakeside deck. There is also a storage shed for all the essential lake toys. This Up-North weekend escape is waiting for you! But it will not last long so set up your showing today.

Additional Details:

Year Built	1975
Lot Acres	0.61
Lot Dimensions	110 x 300 x 120 x 300
School District	896
Taxes	\$1,798
Taxes with Assessments	\$1,798
Tax Year	2024

Additional Features:

Basement: Crawl Space, Wood **Fuel:** Array **Heat:** Radiant **Sewer:** Holding Tank, Private Sewer **Water:** Private, Sand Point **Air Conditioning:** Wall Unit(s), Window Unit(s)

Driving Directions:

GPS Recommended; FROM BRAINERD, take HWY 18 EAST TO CROOKED LAKE ROAD. NORTH TO PORTAGE PASS ROAD. RIGHT TO PROPERTY (SEE FOR SALE SIGN)



Listed By:
RE/MAX Northland

Affinity Real Estate Inc. participates in the Regional Multiple Listing Service of Minnesota, Inc Broker Reciprocity (sm) program, allowing us to display other broker's listings on our website. All properties are subject to prior sale, change or withdrawal.



Call Affinity Real Estate

218-237-3333

info@affinityrealestate.com



Affinity Real Estate - 600 Park Avenue South - Park Rapids MN 56470



website: www.AffinityRealEstate.com | email: info@affinityrealestate.com | office: 218-237-3333 | fax:218-237-3377



\$340,000
MLS 7056240 Residential
22938 Portage Pass Road
Deerwood MN 56444



website: www.AffinityRealEstate.com | email: info@affinityrealestate.com | office: 218-237-3333 | fax:218-237-3377

Affinity
REAL ESTATE INC

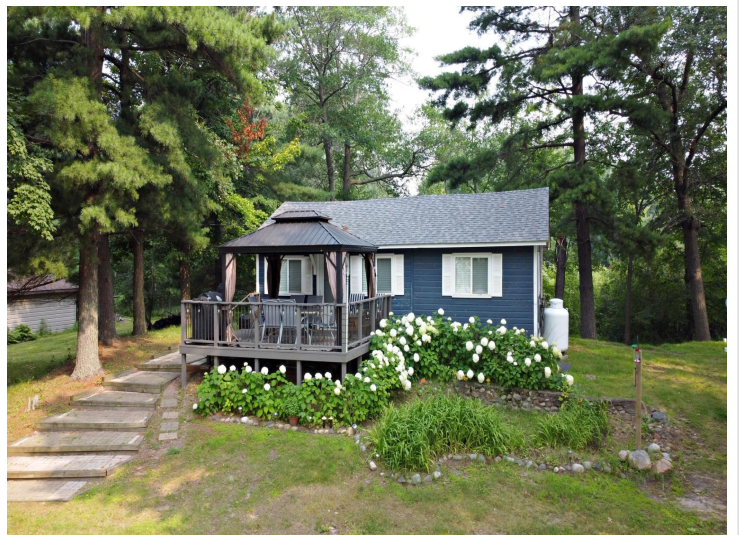
\$340,000
MLS 7056240 Residential
22938 Portage Pass Road
Deerwood MN 56444



website: www.AffinityRealEstate.com | email: info@affinityrealestate.com | office: 218-237-3333 | fax: 218-237-3377

Affinity
REAL ESTATE INC

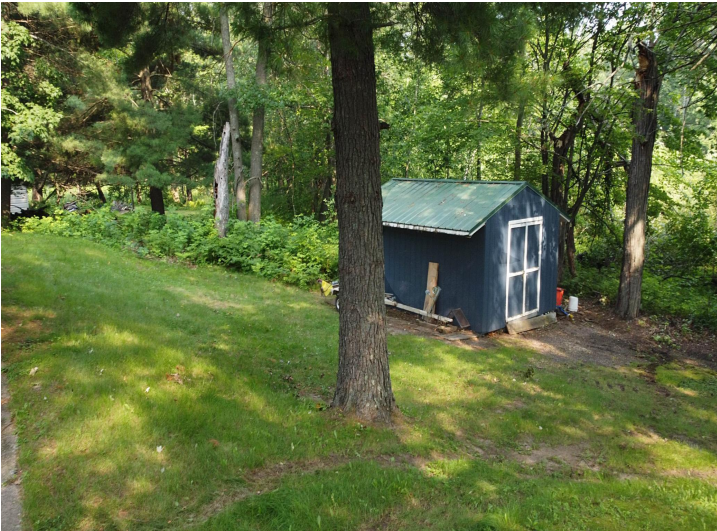
\$340,000
MLS 7056240 Residential
22938 Portage Pass Road
Deerwood MN 56444



website: www.AffinityRealEstate.com | email: info@affinityrealestate.com | office: 218-237-3333 | fax: 218-237-3377

Affinity
REAL ESTATE INC

\$340,000
MLS 7056240 Residential
22938 Portage Pass Road
Deerwood MN 56444



website: www.AffinityRealEstate.com | email: info@affinityrealestate.com | office: 218-237-3333 | fax: 218-237-3377

Affinity
REAL ESTATE INC

\$340,000
MLS 7056240 Residential
22938 Portage Pass Road
Deerwood MN 56444



website: www.AffinityRealEstate.com | email: info@affinityrealestate.com | office: 218-237-3333 | fax:218-237-3377



\$340,000
MLS 7056240 Residential
22938 Portage Pass Road
Deerwood MN 56444



website: www.AffinityRealEstate.com | email: info@affinityrealestate.com | office: 218-237-3333 | fax:218-237-3377



\$340,000
MLS 7056240 Residential
22938 Portage Pass Road
Deerwood MN 56444



website: www.AffinityRealEstate.com | email: info@affinityrealestate.com | office: 218-237-3333 | fax:218-237-3377



\$340,000
MLS 7056240 Residential
22938 Portage Pass Road
Deerwood MN 56444



website: www.AffinityRealEstate.com | email: info@affinityrealestate.com | office: 218-237-3333 | fax:218-237-3377



\$340,000
MLS 7056240 Residential
22938 Portage Pass Road
Deerwood MN 56444