



MLS 7056256 Commercial

\$68,500

9656 County Road 16
Pequot Lakes MN 56472

Status: Active

Description:

Storage Unit 24 is a prime opportunity located in the highly regarded Ideal Storage Facility, known for its outstanding location and impressive resale value. The facility boasts all hard-surfaced, black-topped driveways. This unit comes equipped with a top-notch security system, a dedicated service door, a 3-foot concrete apron, 10-ft high overhead door, and a locked entrance gate. Notably, all buildings received an upgraded roof in 2024. Dimensions are 24' x 36'. Unit 24 provides a substantial 864 square feet of storage space, complete with multiple 110-volt outlets inside. The annual association fee for 2026 is set at just \$918. Encompassing snow plowing, all taxes, insurance, security and utilities. Owners of Ideal Storage Units receive a stock certificate for their unit, adding further value. Seize this opportunity now!

Additional Details:

Year Built	1993
Lot Acres	2.8
Lot Dimensions	870x400x540
Garage Stalls	4
School District	909
Taxes	(unreported)
Taxes with Assessments	(unreported)
Tax Year	2026

Additional Features:

Fuel: Array Heat: None

Driving Directions:

Ideal Storage is located at the junction of County Road 1 and County Road 39 in Ideal Township. The development has the address of 9656 County Road 16.



Listed By:
Larson Group Real Estate/Kelle

Affinity Real Estate Inc. participates in the Regional Multiple Listing Service of Minnesota, Inc Broker Reciprocity (sm) program, allowing us to display other broker's listings on our website. All properties are subject to prior sale, change or withdrawal.



Call Affinity Real Estate

218-237-3333

info@affinityrealestate.com



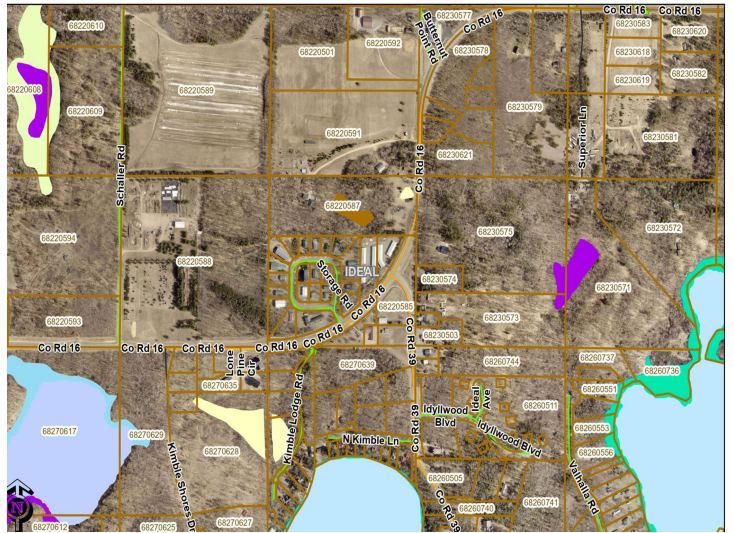
Affinity Real Estate - 600 Park Avenue South - Park Rapids MN 56470



website: www.AffinityRealEstate.com | email: info@affinityrealestate.com | office: 218-237-3333 | fax:218-237-3377



\$68,500
MLS 7056256 Commercial
9656 County Road 16
Pequot Lakes MN 56472



website: www.AffinityRealEstate.com | email: info@affinityrealestate.com | office: 218-237-3333 | fax: 218-237-3377



\$68,500
 MLS 7056256 Commercial
 9656 County Road 16
 Pequot Lakes MN 56472