



MLS 7056335 Residential

**\$229,900**

1,014 sq ft  
2 bedrooms  
1 baths

1018 Highway 71  
Hewitt MN 56453

Status: Active

**Description:**

Take a look at this 48-acre rural property designed for those who are looking for prime hunting and multi-use land. Also features a 2-bedroom, 1-bath home that offers simple, comfortable living and features a newer roof and siding. Perfect home to start and build more later.

The land is a true standout, featuring prime hunting acreage with established food plots that consistently attract wildlife. Whether you're an avid hunter or simply enjoy the outdoors, this property delivers on it all and right out your back door.

With a mix of privacy, usability, and recreational opportunity, this property is ideal for those seeking a rural lifestyle, hunting retreat, or an investment in land.

**Additional Details:**

Year Built	1924
Lot Acres	48.12
Lot Dimensions	Irregular
School District	2267
Taxes	\$1,764
Taxes with Assessments	\$1,764
Tax Year	2026

**Additional Features:**

**Basement:** Unfinished **Fuel:** Array **Heat:** Forced Air **Sewer:** Tank with Drainage Field **Water:** Sand Point **Air Conditioning:** None

**Driving Directions:**

Travelling South on Highway 71 through Hewitt about a mile. Property on East side of road, see sign.



Listed By:  
Hinkle Realty

Affinity Real Estate Inc. participates in the Regional Multiple Listing Service of Minnesota, Inc Broker Reciprocity (sm) program, allowing us to display other broker's listings on our website. All properties are subject to prior sale, change or withdrawal.



Call Affinity Real Estate

**218-237-3333**

[info@affinityrealestate.com](mailto:info@affinityrealestate.com)



Affinity Real Estate - 600 Park Avenue South - Park Rapids MN 56470



website: [www.AffinityRealEstate.com](http://www.AffinityRealEstate.com) | email: [info@affinityrealestate.com](mailto:info@affinityrealestate.com) | office: 218-237-3333 | fax:218-237-3377



**\$229,900**  
MLS 7056335 Residential  
1018 Highway 71  
Hewitt MN 56453



website: [www.AffinityRealEstate.com](http://www.AffinityRealEstate.com) | email: [info@affinityrealestate.com](mailto:info@affinityrealestate.com) | office: 218-237-3333 | fax:218-237-3377



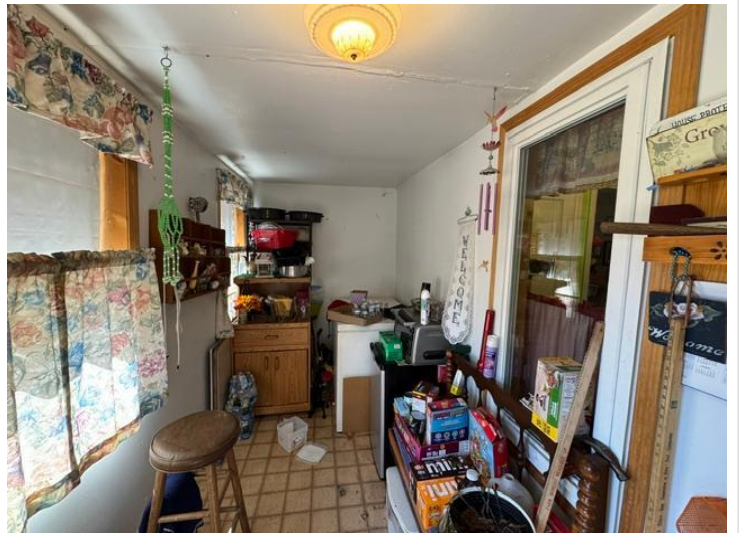
**\$229,900**  
MLS 7056335 Residential  
1018 Highway 71  
Hewitt MN 56453



website: [www.AffinityRealEstate.com](http://www.AffinityRealEstate.com) | email: [info@affinityrealestate.com](mailto:info@affinityrealestate.com) | office: 218-237-3333 | fax:218-237-3377

**Affinity**  
REAL ESTATE INC

**\$229,900**  
MLS 7056335 Residential  
1018 Highway 71  
Hewitt MN 56453



website: [www.AffinityRealEstate.com](http://www.AffinityRealEstate.com) | email: [info@affinityrealestate.com](mailto:info@affinityrealestate.com) | office: 218-237-3333 | fax: 218-237-3377

**Affinity**  
REAL ESTATE INC

**\$229,900**  
MLS 7056335 Residential  
1018 Highway 71  
Hewitt MN 56453



website: [www.AffinityRealEstate.com](http://www.AffinityRealEstate.com) | email: [info@affinityrealestate.com](mailto:info@affinityrealestate.com) | office: 218-237-3333 | fax:218-237-3377



**\$229,900**  
MLS 7056335 Residential  
1018 Highway 71  
Hewitt MN 56453