



MLS 7056350 Residential

\$499,900

2,978 sq ft
5 bedrooms
3 baths

9152 Atwater Court
Brainerd MN 56401

Status: Active

Description:

Hard-to-find 5-bedroom, 3 bath home offering 3,000+ square feet on 2.5 acres in a quiet cul-de-sac just on the outskirts of town. This property delivers the best of both worlds—privacy and space with the convenience of being close to everything. Inside, you'll find a spacious layout with a walkout basement, an updated kitchen featuring granite countertops and stainless steel appliances, and great natural light throughout. Outside offers a large paved driveway, attached 3-car garage, plus a 28x30 detached garage—ideal for storage, hobbies, or extra vehicles. Newer roof and a beautiful wooded setting make this one stand out.

Additional Details:

Year Built	2006
Lot Acres	2.51
Lot Dimensions	81x480x506x394
Garage Stalls	5
School District	181
Taxes	\$2,999
Taxes with Assessments	\$3,024
Tax Year	2026

Additional Features:

Fuel: Array **Heat:** Forced Air

Driving Directions:

MN 210 E to MN 371 Bus exit, left onto Ariell Dr SW, continue on MN 371 Bus N, right onto 1st St W/70th Ave, 70th Ave turns left and becomes Lone Oak Rd, right onto Atwater Court.



Listed By:
Positive Realty

Affinity Real Estate Inc. participates in the Regional Multiple Listing Service of Minnesota, Inc Broker Reciprocity (sm) program, allowing us to display other broker's listings on our website. All properties are subject to prior sale, change or withdrawal.



Call Affinity Real Estate

218-237-3333

info@affinityrealestate.com



Affinity Real Estate - 600 Park Avenue South - Park Rapids MN 56470



website: www.AffinityRealEstate.com | email: info@affinityrealestate.com | office: 218-237-3333 | fax:218-237-3377



\$499,900
MLS 7056350 Residential
9152 Atwater Court
Brainerd MN 56401



website: www.AffinityRealEstate.com | email: info@affinityrealestate.com | office: 218-237-3333 | fax:218-237-3377

Affinity
REAL ESTATE INC

\$499,900
MLS 7056350 Residential
9152 Atwater Court
Brainerd MN 56401



website: www.AffinityRealEstate.com | email: info@affinityrealestate.com | office: 218-237-3333 | fax:218-237-3377

Affinity
REAL ESTATE INC

\$499,900
MLS 7056350 Residential
9152 Atwater Court
Brainerd MN 56401



website: www.AffinityRealEstate.com | email: info@affinityrealestate.com | office: 218-237-3333 | fax:218-237-3377

Affinity
REAL ESTATE INC

\$499,900
MLS 7056350 Residential
9152 Atwater Court
Brainerd MN 56401



website: www.AffinityRealEstate.com | email: info@affinityrealestate.com | office: 218-237-3333 | fax:218-237-3377

Affinity
REAL ESTATE INC

\$499,900
MLS 7056350 Residential
9152 Atwater Court
Brainerd MN 56401



website: www.AffinityRealEstate.com | email: info@affinityrealestate.com | office: 218-237-3333 | fax:218-237-3377

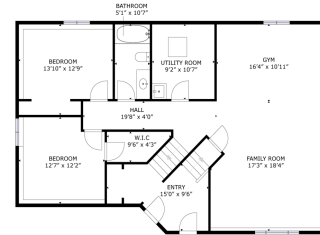


\$499,900
MLS 7056350 Residential
9152 Atwater Court
Brainerd MN 56401



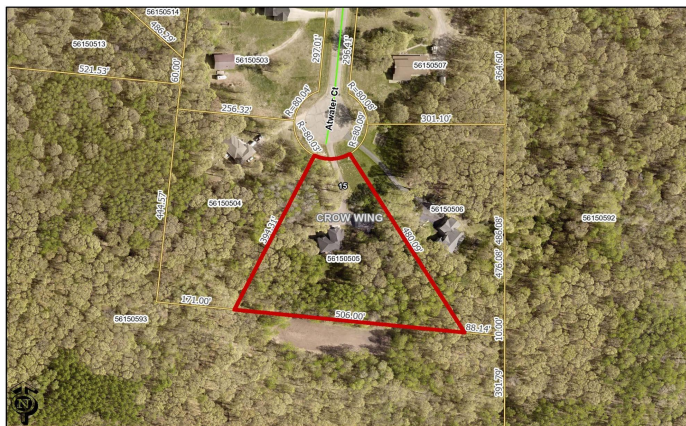
GROSS INTERNAL AREA
FLOOR 1: 1270 sq.ft. FLOOR 2: 1657 sq.ft.
TOTAL: 2927 sq.ft.
SIZES AND DIMENSIONS ARE APPROXIMATE, ACTUAL MAY VARY.

FLOOR 2



GROSS INTERNAL AREA
FLOOR 1: 1270 sq.ft. FLOOR 2: 1657 sq.ft.
TOTAL: 2927 sq.ft.
SIZES AND DIMENSIONS ARE APPROXIMATE, ACTUAL MAY VARY.

FLOOR 1



These data are provided on an "AS-IS" basis, without warranty of any type, expressed or implied, including but not limited to any warranty as to their performance, merchantability or fitness for any particular purpose.

Date: 8/5/2025 Time: 10:58 AM

website: www.AffinityRealEstate.com | email: info@affinityrealestate.com | office: 218-237-3333 | fax: 218-237-3377



\$499,900
MLS 7056350 Residential
9152 Atwater Court
Brainerd MN 56401