



MLS 7056351 Residential

**\$224,900**

1,800 sq ft  
4 bedrooms  
2 baths

906 Whitford Street  
Fergus Falls MN 56537

Status: Active

**Description:**

Enjoy the charm and space of this 1960s era 4 bedroom, 2 bathroom home situated on an oversized corner lot in Fergus Falls, directly across from Channing Park and just minutes from the Public Library and hospital. This well maintained property offers year round comfort with a dual-fuel boiler and mini-split system. Additional highlights include an attached 2 stall garage plus a second attached garage in back, providing ample room for vehicles, storage, or hobbies. This incredible home won't last long.

**Additional Details:**

Year Built	1961
Lot Acres	0.24
Lot Dimensions	70x150
Garage Stalls	2
School District	1944
Taxes	\$3,010
Taxes with Assessments	\$3,572
Tax Year	2026

**Additional Features:**

**Basement:** Other, Unfinished **Fuel:** Array **Garage:** 2 **Heat:** Boiler **Sewer:** City Sewer/Connected **Water:** City Water/Connected **Air Conditioning:** Ductless Mini-Split, Window Unit(s)

**Driving Directions:**

Head S on S Union Ave and turn E onto W Vernon Ave. Turn S onto Whitford St and into the property.



Listed By:  
Keller Williams Realty Professionals

Affinity Real Estate Inc. participates in the Regional Multiple Listing Service of Minnesota, Inc Broker Reciprocity (sm) program, allowing us to display other broker's listings on our website. All properties are subject to prior sale, change or withdrawal.



Call Affinity Real Estate

**218-237-3333**

[info@affinityrealestate.com](mailto:info@affinityrealestate.com)



Affinity Real Estate - 600 Park Avenue South - Park Rapids MN 56470



website: [www.AffinityRealEstate.com](http://www.AffinityRealEstate.com) | email: [info@affinityrealestate.com](mailto:info@affinityrealestate.com) | office: 218-237-3333 | fax:218-237-3377

**Affinity**  
REAL ESTATE INC

**\$224,900**  
MLS 7056351 Residential  
906 Whitford Street  
Fergus Falls MN 56537



website: [www.AffinityRealEstate.com](http://www.AffinityRealEstate.com) | email: [info@affinityrealestate.com](mailto:info@affinityrealestate.com) | office: 218-237-3333 | fax:218-237-3377

**Affinity**  
REAL ESTATE INC

**\$224,900**  
MLS 7056351 Residential  
906 Whitford Street  
Fergus Falls MN 56537



website: [www.AffinityRealEstate.com](http://www.AffinityRealEstate.com) | email: [info@affinityrealestate.com](mailto:info@affinityrealestate.com) | office: 218-237-3333 | fax:218-237-3377

**Affinity**  
REAL ESTATE INC

**\$224,900**  
MLS 7056351 Residential  
906 Whitford Street  
Fergus Falls MN 56537



website: [www.AffinityRealEstate.com](http://www.AffinityRealEstate.com) | email: [info@affinityrealestate.com](mailto:info@affinityrealestate.com) | office: 218-237-3333 | fax: 218-237-3377



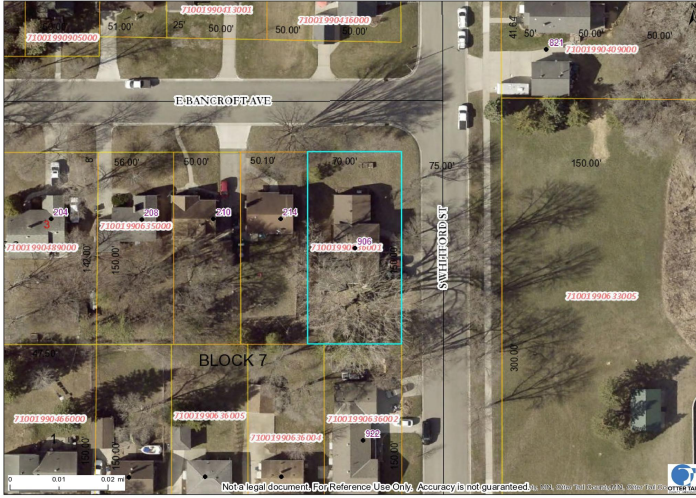
**\$224,900**  
MLS 7056351 Residential  
906 Whitford Street  
Fergus Falls MN 56537



website: [www.AffinityRealEstate.com](http://www.AffinityRealEstate.com) | email: [info@affinityrealestate.com](mailto:info@affinityrealestate.com) | office: 218-237-3333 | fax: 218-237-3377

**Affinity**  
REAL ESTATE INC

**\$224,900**  
MLS 7056351 Residential  
906 Whitford Street  
Fergus Falls MN 56537



website: [www.AffinityRealEstate.com](http://www.AffinityRealEstate.com) | email: [info@affinityrealestate.com](mailto:info@affinityrealestate.com) | office: 218-237-3333 | fax: 218-237-3377



**\$224,900**  
 MLS 7056351 Residential  
 906 Whitford Street  
 Fergus Falls MN 56537