



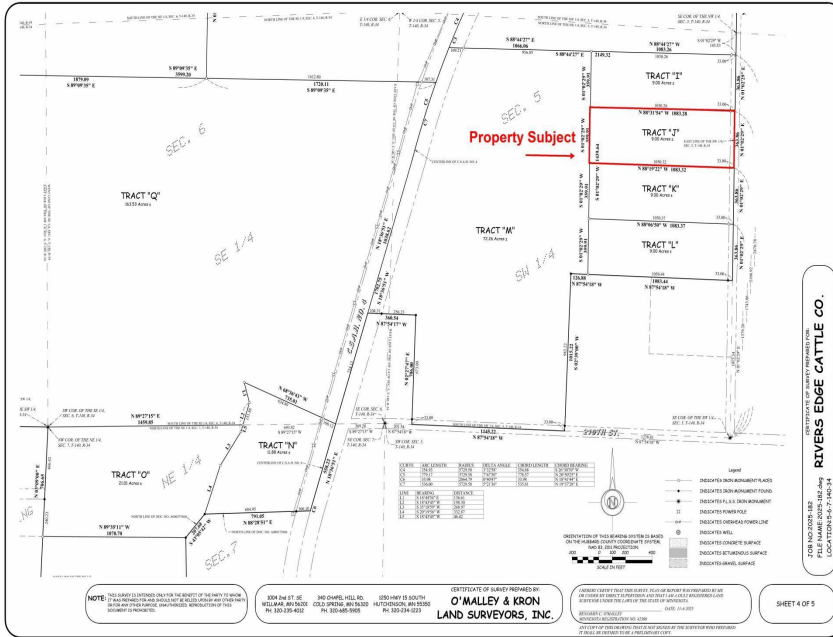
MLS 7056416 Land

\$89,900

9 Acres
Raw Land

Tract J 175th Avenue
Park Rapids MN 56470

Status: Active



Description:

Looking for the perfect spot to build? Check out this newly split parcel in a convenient location! Enjoy the freedom of bare land with easy access to everything you need. Bring your plans and start turning your vision into reality.

Additional Details:

Lot Acres	9
Lot Dimensions	363x1050x359x1050
School District	1384
Taxes	(unreported)
Taxes with Assessments	(unreported)
Tax Year	2026

Additional Features:

Driving Directions:

From 34/71 in Park Rapids, East on 34 to a left on County 4 to a right on 210th St. to a left on 175th Ave to property on left.



Listed By:
Wolff & Simon Real Estate

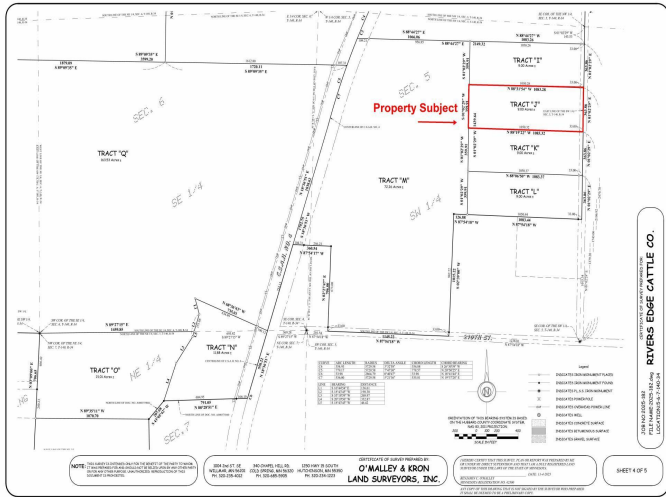
Affinity Real Estate Inc. participates in the Regional Multiple Listing Service of Minnesota, Inc Broker Reciprocity (sm) program, allowing us to display other broker's listings on our website. All properties are subject to prior sale, change or withdrawal.



Call Affinity Real Estate
218-237-3333
info@affinityrealestate.com



Affinity Real Estate - 600 Park Avenue South - Park Rapids MN 56470



website: www.AffinityRealEstate.com | email: info@affinityrealestate.com | office: 218-237-3333 | fax: 218-237-3377



\$89,900
 MLS 7056416 Land
 Tract J 175th Avenue
 Park Rapids MN 56470