



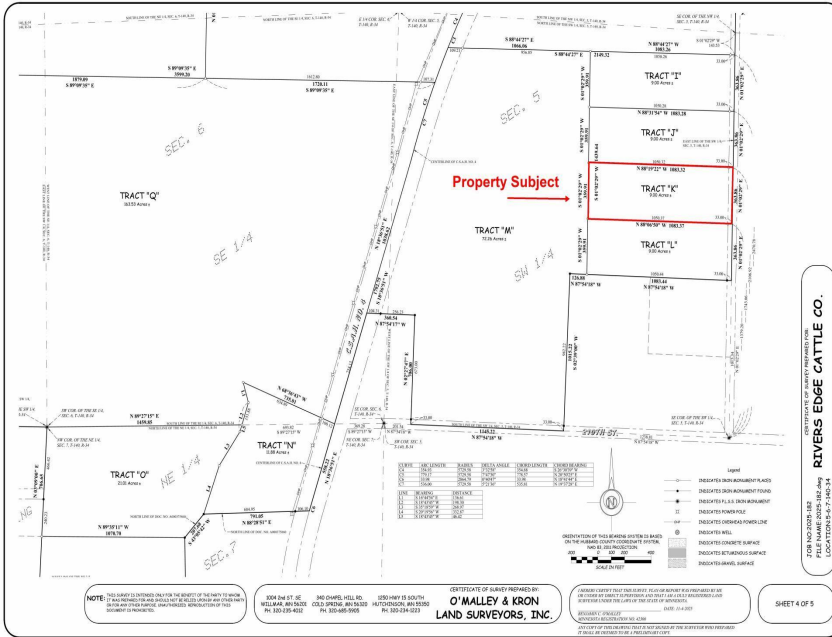
MLS 7056419 Land

**\$69,900**

9 Acres  
Raw Land

Tract K 175th Avenue  
Park Rapids MN 56470

Status: Active



**Description:**

Looking for the perfect spot to build? Check out this newly split parcel in a convenient location! Enjoy the freedom of bare land with easy access to everything you need. Bring your plans and start turning your vision into reality.

**Additional Details:**

Lot Acres	9
Lot Dimensions	363x1050x359x1050
School District	1384
Taxes	(unreported)
Taxes with Assessments	(unreported)
Tax Year	2026

**Additional Features:**

**Driving Directions:**

From 34/71 in Park Rapids, East on 34 to a left on County 4 to a right on 210th St. to a left on 175th Ave to property on left.



Listed By:  
Wolff & Simon Real Estate

Affinity Real Estate Inc. participates in the Regional Multiple Listing Service of Minnesota, Inc Broker Reciprocity (sm) program, allowing us to display other broker's listings on our website. All properties are subject to prior sale, change or withdrawal.



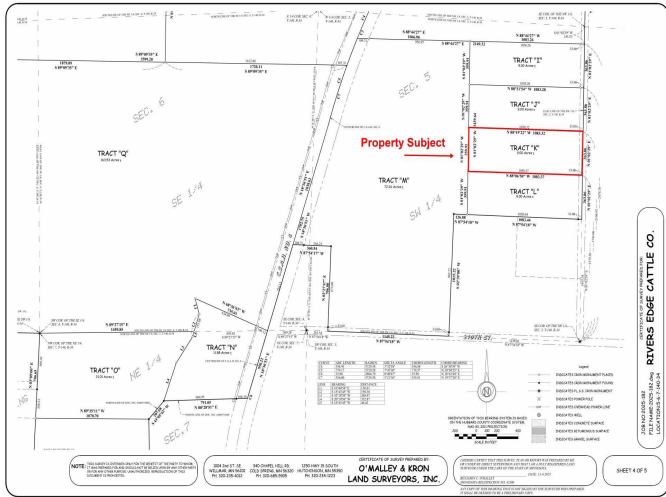
Call Affinity Real Estate

**218-237-3333**

[info@affinityrealestate.com](mailto:info@affinityrealestate.com)



Affinity Real Estate - 600 Park Avenue South - Park Rapids MN 56470



website: [www.AffinityRealEstate.com](http://www.AffinityRealEstate.com) | email: [info@affinityrealestate.com](mailto:info@affinityrealestate.com) | office: 218-237-3333 | fax: 218-237-3377



**\$69,900**  
 MLS 7056419 Land  
 Tract K 175th Avenue  
 Park Rapids MN 56470



website: [www.AffinityRealEstate.com](http://www.AffinityRealEstate.com) | email: [info@affinityrealestate.com](mailto:info@affinityrealestate.com) | office: 218-237-3333 | fax:218-237-3377



**\$69,900**  
MLS 7056419 Land  
Tract K 175th Avenue  
Park Rapids MN 56470