



MLS 7056560 Land

\$29,900

0.19 Acres
Raw Land

TBD Moonlight Lot 2 Lane
Bemidji MN 56601

Status: Active

Description:

Welcome to Bemidji's newest development, Mountain View Meadows Community. Buildable cleared lots are available on Moonlight Lane. This lot has been cleared and ready to build your dream home. Mountain View is connected to natural gas, city water and sewer. There are plans for a city park to be built. Sidewalks are in for an evening stroll. Bike trails nearby. Just outside your door you will find the true meaning of community so make the move to Bemidji where you will have access to music, arts, sports, theaters, parks, fishing, skating, skiing, hiking and biking. The Developer is also a builder with many floor plans to choose from. Call for more information and a tour today!

Additional Details:

Lot Acres	0.19
Lot Dimensions	104x86x73x98
School District	1386
Taxes	\$402
Taxes with Assessments	\$402
Tax Year	2026

Additional Features:

Driving Directions:

From downtown Bemidji take Bemidji Ave S to Shedhorn St SW. Right on Shedhorn St SW to Moonlight Ln SW. Right on Moonlight Ln. Lot on your right.



Listed By:
Better Homes and Gardens Real Estate First Choice

Affinity Real Estate Inc. participates in the Regional Multiple Listing Service of Minnesota, Inc Broker Reciprocity (sm) program, allowing us to display other broker's listings on our website. All properties are subject to prior sale, change or withdrawal.



Call Affinity Real Estate

218-237-3333

info@affinityrealestate.com



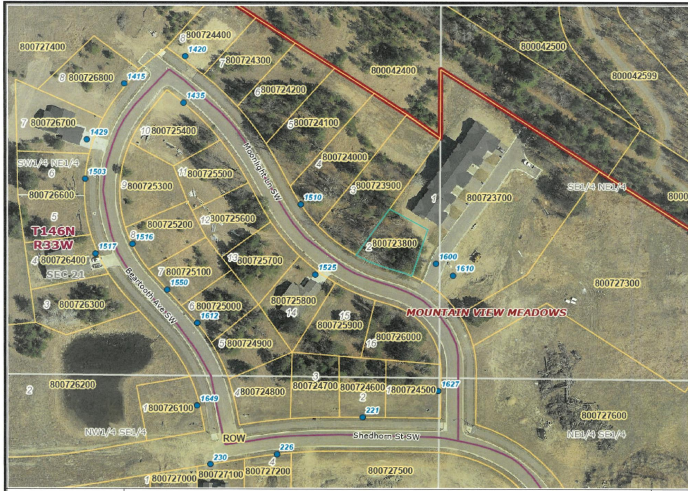
Affinity Real Estate - 600 Park Avenue South - Park Rapids MN 56470



website: www.AffinityRealEstate.com | email: info@affinityrealestate.com | office: 218-237-3333 | fax:218-237-3377

Affinity
REAL ESTATE INC

\$29,900
MLS 7056560 Land
TBD Moonlight Lot 2 Lane
Bemidji MN 56601



website: www.AffinityRealEstate.com | email: info@affinityrealestate.com | office: 218-237-3333 | fax:218-237-3377



\$29,900
MLS 7056560 Land
TBD Moonlight Lot 2 Lane
Bemidji MN 56601