



MLS 7056575 Land

\$28,000

0.28 Acres
Finished Lot(s)

141 15 Street
Glyndon MN 56547

Status: Active

Description:

Amazing Lots in Glyndon, MN – Build Your Dream Home! Looking for a place to call home? These affordable lots in Glyndon are ready for your vision. Enjoy the comfort of small-town living with the convenience of nearby amenities. Glyndon offers a welcoming community, local dining options and shopping options, with easy access to U.S. Highway 10 for a quick commute to the Fargo-Moorhead area. Whether you're planning your first home or your forever home, this is a great opportunity to build in a welcoming neighborhood. Build to suit options available. Don't miss out—secure your lot today and start planning your future in Glyndon!

Additional Details:

Lot Acres	0.28
Lot Dimensions	57x167
School District	1055
Taxes	\$126
Taxes with Assessments	\$4,546
Tax Year	2025

Additional Features:

Driving Directions:

From Highway 10, turn south onto Parke Ave S, turn onto 15thSt SW



Listed By:
Vision Realty

Affinity Real Estate Inc. participates in the Regional Multiple Listing Service of Minnesota, Inc Broker Reciprocity (sm) program, allowing us to display other broker's listings on our website. All properties are subject to prior sale, change or withdrawal.



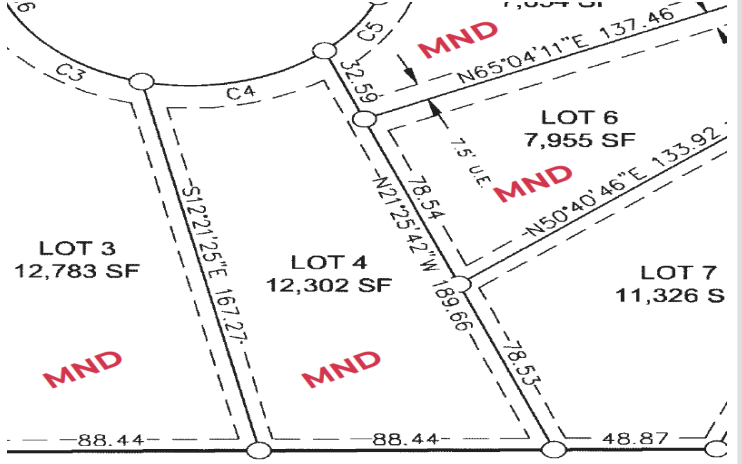
Call Affinity Real Estate

218-237-3333

info@affinityrealestate.com



Affinity Real Estate - 600 Park Avenue South - Park Rapids MN 56470



website: www.AffinityRealEstate.com | email: info@affinityrealestate.com | office: 218-237-3333 | fax: 218-237-3377



\$28,000
 MLS 7056575 Land
 141 15 Street
 Glyndon MN 56547



website: www.AffinityRealEstate.com | email: info@affinityrealestate.com | office: 218-237-3333 | fax:218-237-3377

Affinity
REAL ESTATE INC

\$28,000
MLS 7056575 Land
141 15 Street
Glyndon MN 56547