



MLS 7056624 Land

**\$25,000**

0.15 Acres  
Finished Lot(s)

115 15 Avenue  
Glyndon MN 56547

Status: Active

**Description:**

Amazing Lots in Glyndon, MN – Build Your Dream Home! Looking for a place to call home? These affordable lots in Glyndon are ready for your vision. Enjoy the comfort of small-town living with the convenience of nearby amenities. Glyndon offers a welcoming community, local dining options and shopping options, with easy access to U.S. Highway 10 for a quick commute to the Fargo-Moorhead area. Whether you're planning your first home or your forever home, this is a great opportunity to build in a welcoming neighborhood. Build to suit options available. Don't miss out—secure your lot today and start planning your future in Glyndon!

**Additional Details:**

Lot Acres	0.15
Lot Dimensions	52x128
School District	1055
Taxes	\$80
Taxes with Assessments	\$4,514
Tax Year	2025

**Additional Features:**

**Driving Directions:**

From Highway 10, turn south onto Parke Ave S, turn onto 15thSt SW



Listed By:  
Vision Realty

Affinity Real Estate Inc. participates in the Regional Multiple Listing Service of Minnesota, Inc Broker Reciprocity (sm) program, allowing us to display other broker's listings on our website. All properties are subject to prior sale, change or withdrawal.



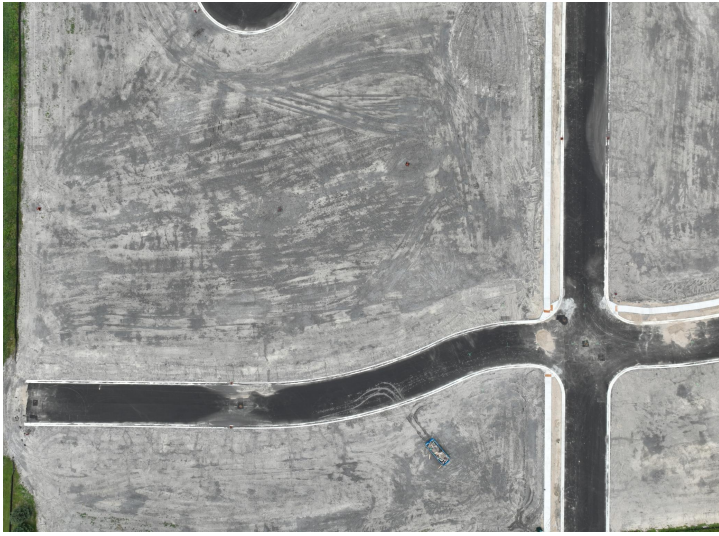
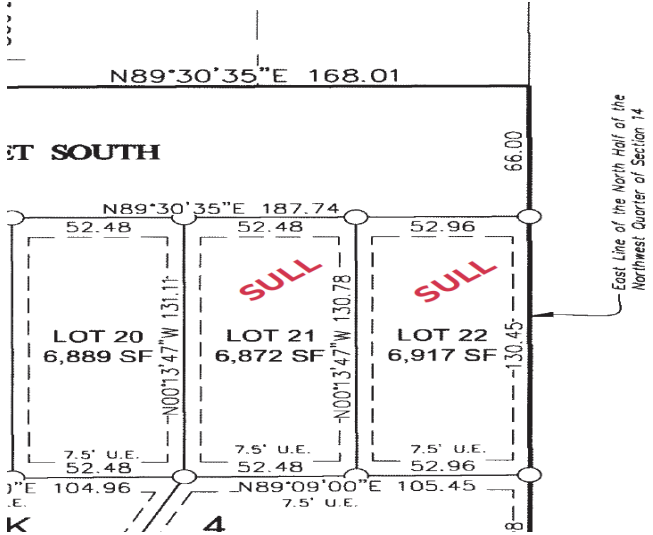
**Call Affinity Real Estate**

**218-237-3333**

**info@affinityrealestate.com**



**Affinity Real Estate - 600 Park Avenue South - Park Rapids MN 56470**



website: [www.AffinityRealEstate.com](http://www.AffinityRealEstate.com) | email: [info@affinityrealestate.com](mailto:info@affinityrealestate.com) | office: 218-237-3333 | fax: 218-237-3377



**\$25,000**  
 MLS 7056624 Land  
 115 15 Avenue  
 Glyndon MN 56547



website: [www.AffinityRealEstate.com](http://www.AffinityRealEstate.com) | email: [info@affinityrealestate.com](mailto:info@affinityrealestate.com) | office: 218-237-3333 | fax:218-237-3377



**\$25,000**  
MLS 7056624 Land  
115 15 Avenue  
Glyndon MN 56547