



MLS 7057005 Residential

\$250,000

1,251 sq ft
3 bedrooms
2 baths

402 Dale Drive
Remer MN 56672

Status: Active

Description:

Chalet-style home with impressive updates throughout. This 3-bedroom, 2-bath property sits on a spacious corner lot in a convenient location near schools and shopping. The interior has been completely refreshed, featuring new flooring, trim, railings, and doors throughout. The kitchen stands out with new cabinetry, stainless steel appliances, and solid surface countertops, making it anyone's dream workspace. Exterior improvements include new siding, central air, decking, and updated garage doors, adding to the home's overall appeal and efficiency. With numerous updates already completed, this property is ready for its next owner to move in and enjoy.

Additional Details:

Year Built	1984
Lot Acres	0.35
Lot Dimensions	133x113
Garage Stalls	2
School District	734
Taxes	\$1,816
Taxes with Assessments	\$1,902
Tax Year	2026

Additional Features:

Basement: Block **Fuel:** Array **Garage:** 2 **Heat:** Forced Air **Sewer:** City Sewer/Connected **Water:** Sand Point, Well **Air Conditioning:** Central Air

Driving Directions:

Hwy 6 to left on Forestry to left on Dale Dr.



Listed By:
COLDWELL BANKER NORTHWOODS

Affinity Real Estate Inc. participates in the Regional Multiple Listing Service of Minnesota, Inc Broker Reciprocity (sm) program, allowing us to display other broker's listings on our website. All properties are subject to prior sale, change or withdrawal.



Call Affinity Real Estate

218-237-3333

info@affinityrealestate.com



Affinity Real Estate - 600 Park Avenue South - Park Rapids MN 56470



website: www.AffinityRealEstate.com | email: info@affinityrealestate.com | office: 218-237-3333 | fax: 218-237-3377

Affinity
REAL ESTATE INC

\$250,000
MLS 7057005 Residential
402 Dale Drive
Remer MN 56672



website: www.AffinityRealEstate.com | email: info@affinityrealestate.com | office: 218-237-3333 | fax:218-237-3377



\$250,000
MLS 7057005 Residential
402 Dale Drive
Remer MN 56672



website: www.AffinityRealEstate.com | email: info@affinityrealestate.com | office: 218-237-3333 | fax: 218-237-3377

Affinity
REAL ESTATE INC

\$250,000
MLS 7057005 Residential
402 Dale Drive
Remer MN 56672



website: www.AffinityRealEstate.com | email: info@affinityrealestate.com | office: 218-237-3333 | fax: 218-237-3377

Affinity
REAL ESTATE INC

\$250,000
MLS 7057005 Residential
402 Dale Drive
Remer MN 56672



website: www.AffinityRealEstate.com | email: info@affinityrealestate.com | office: 218-237-3333 | fax:218-237-3377

Affinity
REAL ESTATE INC

\$250,000
MLS 7057005 Residential
402 Dale Drive
Remer MN 56672



website: www.AffinityRealEstate.com | email: info@affinityrealestate.com | office: 218-237-3333 | fax:218-237-3377



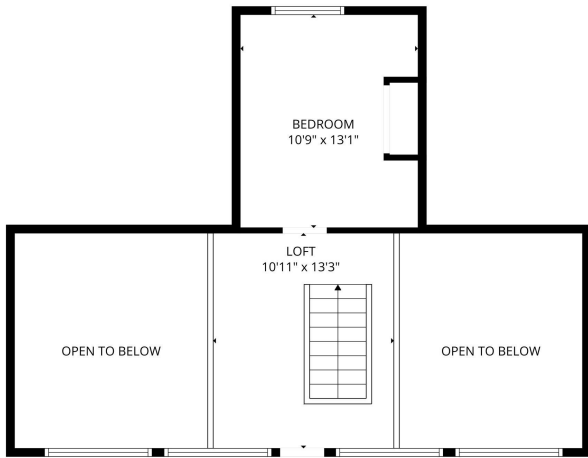
\$250,000
MLS 7057005 Residential
402 Dale Drive
Remer MN 56672



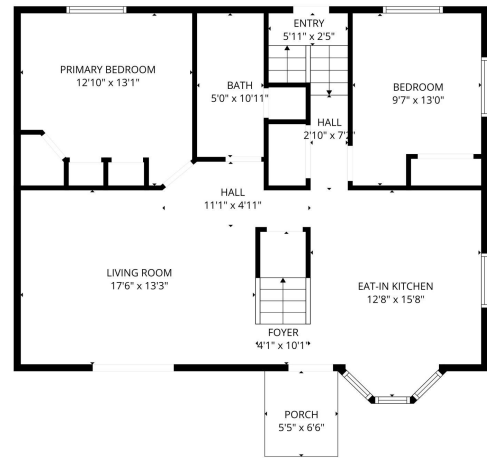
website: www.AffinityRealEstate.com | email: info@affinityrealestate.com | office: 218-237-3333 | fax:218-237-3377



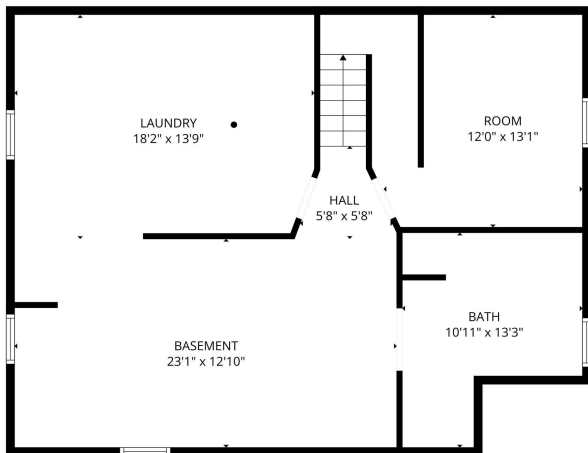
\$250,000
MLS 7057005 Residential
402 Dale Drive
Remer MN 56672



FLOOR PLAN CREATED BY CUBICASA APP. MEASUREMENTS DEEMED HIGHLY RELIABLE BUT NOT GUARANTEED.



FLOOR PLAN CREATED BY CUBICASA APP. MEASUREMENTS DEEMED HIGHLY RELIABLE BUT NOT GUARANTEED.



FLOOR PLAN CREATED BY CUBICASA APP. MEASUREMENTS DEEMED HIGHLY RELIABLE BUT NOT GUARANTEED.



FLOOR PLAN CREATED BY CUBICASA APP. MEASUREMENTS DEEMED HIGHLY RELIABLE BUT NOT GUARANTEED.

website: www.AffinityRealEstate.com | email: info@affinityrealestate.com | office: 218-237-3333 | fax: 218-237-3377



\$250,000
 MLS 7057005 Residential
 402 Dale Drive
 Remer MN 56672