



MLS 7057104 Residential

\$274,888

2,424 sq ft
3 bedrooms
2 baths

404 Evergreen Park Boulevard
Litchfield MN 55355

Status: Active

Description:

Amazing woodwork and character throughout this 3 bed 2 bath home. Beautiful built-in buffet in dining room
Nice oak hardwood floors, leaded glass in library in living room. Front and back 3 season porches with lots of natural light.
Huge kitchen with breakfast nook, copper sink newer granite counter tops. 3 generous bedrooms all on one level, cool walk-in closets. Enjoy the firepit and patio areas in this deep park like lot.

Additional Details:

Year Built	1915
Lot Acres	0.75
Lot Dimensions	100x300
Garage Stalls	2
School District	1755
Taxes	\$2,302
Taxes with Assessments	\$2,302
Tax Year	2025

Additional Features:

Basement: Finished, Full **Fuel:** Array **Garage:** 2 **Heat:** Baseboard, Boiler, Hot Water **Sewer:** City Sewer/Connected **Water:** City Water/Connected **Air Conditioning:** Window Unit(s)

Driving Directions:

Sibley Ave. go west on 2nd street to Swift Ave. go south then west on Evergreen Park Blvd. to home.



Listed By:
RE/MAX Today's Properties

Affinity Real Estate Inc. participates in the Regional Multiple Listing Service of Minnesota, Inc Broker Reciprocity (sm) program, allowing us to display other broker's listings on our website. All properties are subject to prior sale, change or withdrawal.



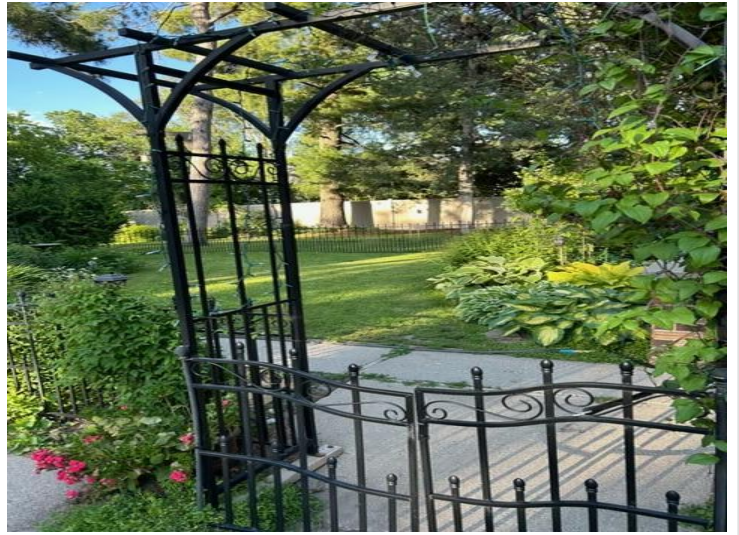
Call Affinity Real Estate

218-237-3333

info@affinityrealestate.com



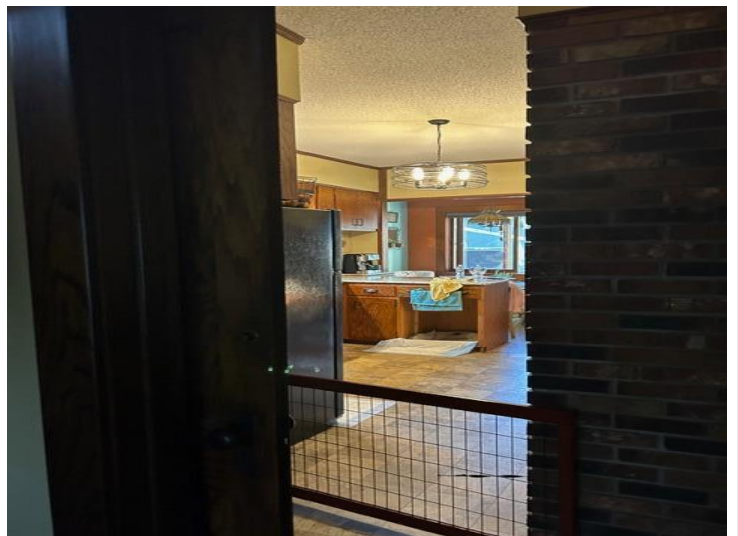
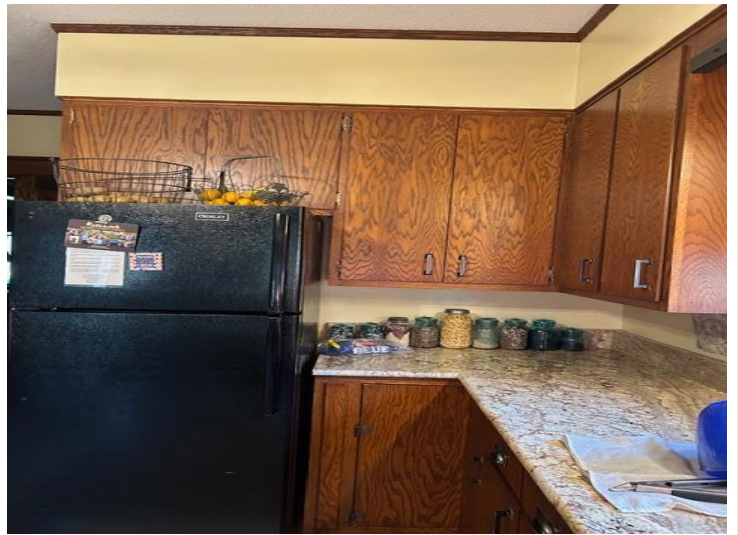
Affinity Real Estate - 600 Park Avenue South - Park Rapids MN 56470



website: www.AffinityRealEstate.com | email: info@affinityrealestate.com | office: 218-237-3333 | fax:218-237-3377



\$274,888
MLS 7057104 Residential
404 Evergreen Park
Boulevard
Litchfield MN 55355



website: www.AffinityRealEstate.com | email: info@affinityrealestate.com | office: 218-237-3333 | fax:218-237-3377

Affinity
REAL ESTATE INC

\$274,888
MLS 7057104 Residential
404 Evergreen Park
Boulevard
Litchfield MN 55355



website: www.AffinityRealEstate.com | email: info@affinityrealestate.com | office: 218-237-3333 | fax: 218-237-3377

Affinity
REAL ESTATE INC

\$274,888
MLS 7057104 Residential
404 Evergreen Park
Boulevard
Litchfield MN 55355



website: www.AffinityRealEstate.com | email: info@affinityrealestate.com | office: 218-237-3333 | fax:218-237-3377

Affinity
REAL ESTATE INC

\$274,888
MLS 7057104 Residential
404 Evergreen Park
Boulevard
Litchfield MN 55355

website: www.AffinityRealEstate.com | email: info@affinityrealestate.com | office: 218-237-3333 | fax:218-237-3377



\$274,888
MLS 7057104 Residential
404 Evergreen Park
Boulevard
Litchfield MN 55355

website: www.AffinityRealEstate.com | email: info@affinityrealestate.com | office: 218-237-3333 | fax:218-237-3377



\$274,888
MLS 7057104 Residential
404 Evergreen Park
Boulevard
Litchfield MN 55355

website: www.AffinityRealEstate.com | email: info@affinityrealestate.com | office: 218-237-3333 | fax:218-237-3377



\$274,888
MLS 7057104 Residential
404 Evergreen Park
Boulevard
Litchfield MN 55355

website: www.AffinityRealEstate.com | email: info@affinityrealestate.com | office: 218-237-3333 | fax:218-237-3377



\$274,888
MLS 7057104 Residential
404 Evergreen Park
Boulevard
Litchfield MN 55355

website: www.AffinityRealEstate.com | email: info@affinityrealestate.com | office: 218-237-3333 | fax:218-237-3377



\$274,888

MLS 7057104 Residential
404 Evergreen Park
Boulevard
Litchfield MN 55355

website: www.AffinityRealEstate.com | email: info@affinityrealestate.com | office: 218-237-3333 | fax:218-237-3377



\$274,888
MLS 7057104 Residential
404 Evergreen Park
Boulevard
Litchfield MN 55355