



MLS 7057179 Land

\$39,900

0.45 Acres
Raw Land

TBD Moonlight Lot 3 Lane
Bemidji MN 56601

Status: Active

Description:

Welcome to Bemidji's newest development, Mountain View Meadows Community. Buildable cleared lots are available on Moonlight Lane. This lot has been cleared and ready to build your dream home. Mountain View is connected to natural gas, city water and sewer. There are plans for a city park to be built. Sidewalks are in for an evening stroll. Bike trails nearby. Just outside your door you will find the true meaning of community so make the move to Bemidji where you will have access to music, arts, sports, theaters, parks, fishing, skating, skiing, hiking and biking. The Developer is also a builder with many floor plans to choose from. Call for more information and a tour today!

Additional Details:

Lot Acres	0.45
Lot Dimensions	83x251x83x251x
School District	1386
Taxes	\$618
Taxes with Assessments	\$618
Tax Year	2026

Additional Features:

Driving Directions:

From downtown Bemidji take Bemidji Ave S to Shedhorn St SW. Right on Shedhorn St SW to Moonlight Ln SW. Right on Moonlight Ln. Lot on your right.



Listed By:
Better Homes and Gardens Real Estate First Choice

Affinity Real Estate Inc. participates in the Regional Multiple Listing Service of Minnesota, Inc Broker Reciprocity (sm) program, allowing us to display other broker's listings on our website. All properties are subject to prior sale, change or withdrawal.



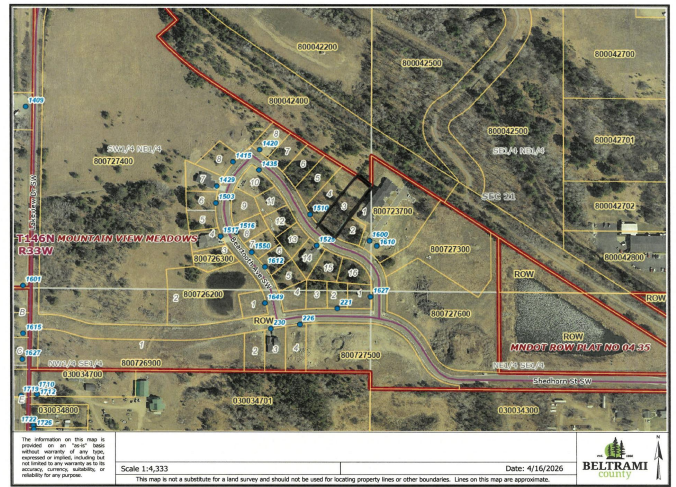
Call Affinity Real Estate

218-237-3333

info@affinityrealestate.com



Affinity Real Estate - 600 Park Avenue South - Park Rapids MN 56470



website: www.AffinityRealEstate.com | email: info@affinityrealestate.com | office: 218-237-3333 | fax:218-237-3377



\$39,900
 MLS 7057179 Land
 TBD Moonlight Lot 3 Lane
 Bemidji MN 56601