



MLS 7057213 Commercial

**\$599,900**

10740 Brent Drive  
Brainerd MN 56401

Status: Active

**Description:**

Incredible opportunity with this prime 3+ acre property featuring over 200 feet of high-visibility frontage on Business 371.

The fully finished 45x90 (4,000+ sq ft) shop is turnkey and ready for immediate use, offering exceptional flexibility for a wide range of ventures. Currently set up for a mechanic shop, this property easily adapts to industrial, commercial, or investment-driven uses—the potential here is truly unmatched.

With expansive open acreage, there is ample room for future growth, whether you envision additional buildings, storage units, or further development to maximize income potential.

This is a rare chance to secure a high-exposure location with built-in infrastructure and room to scale.

**Additional Details:**

Year Built	2004
Lot Acres	3.26
Lot Dimensions	600x252x213x570
Garage Stalls	4
School District	896
Taxes	\$3,868
Taxes with Assessments	\$3,868
Tax Year	2025

**Additional Features:**

**Fuel:** Array **Garage:** 4 **Heat:** Forced Air, Radiant **Sewer:** Septic System Compliant - Yes **Water:** 4-Inch Submersible, Well

**Driving Directions:**

Business 371 south 2 miles on right .. No sign on property Fire number 10740



Listed By:  
LPT Realty, LLC.

Affinity Real Estate Inc. participates in the Regional Multiple Listing Service of Minnesota, Inc Broker Reciprocity (sm) program, allowing us to display other broker's listings on our website. All properties are subject to prior sale, change or withdrawal.



**Call Affinity Real Estate**

**218-237-3333**

**info@affinityrealestate.com**



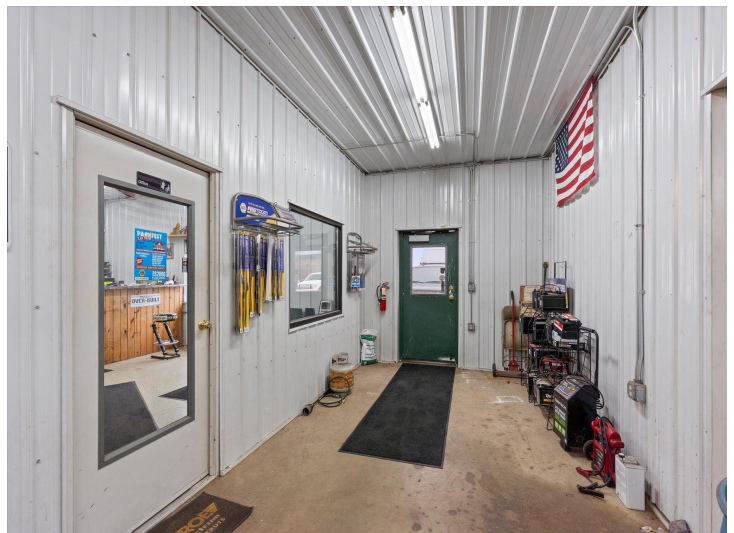
**Affinity Real Estate - 600 Park Avenue South - Park Rapids MN 56470**



website: [www.AffinityRealEstate.com](http://www.AffinityRealEstate.com) | email: [info@affinityrealestate.com](mailto:info@affinityrealestate.com) | office: 218-237-3333 | fax: 218-237-3377

**Affinity**  
REAL ESTATE INC

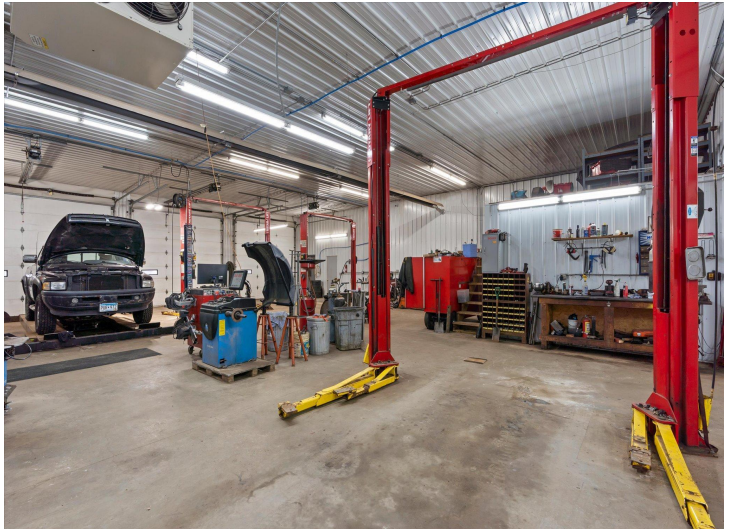
**\$599,900**  
MLS 7057213 Commercial  
10740 Brent Drive  
Brainerd MN 56401



website: [www.AffinityRealEstate.com](http://www.AffinityRealEstate.com) | email: [info@affinityrealestate.com](mailto:info@affinityrealestate.com) | office: 218-237-3333 | fax:218-237-3377



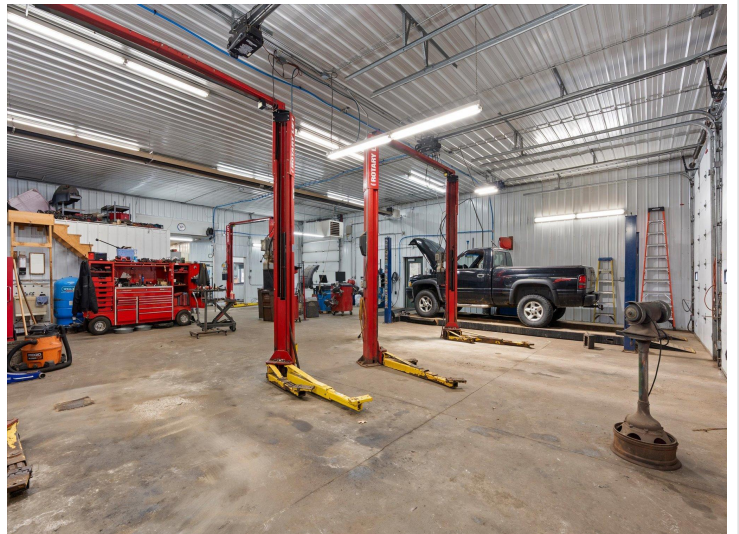
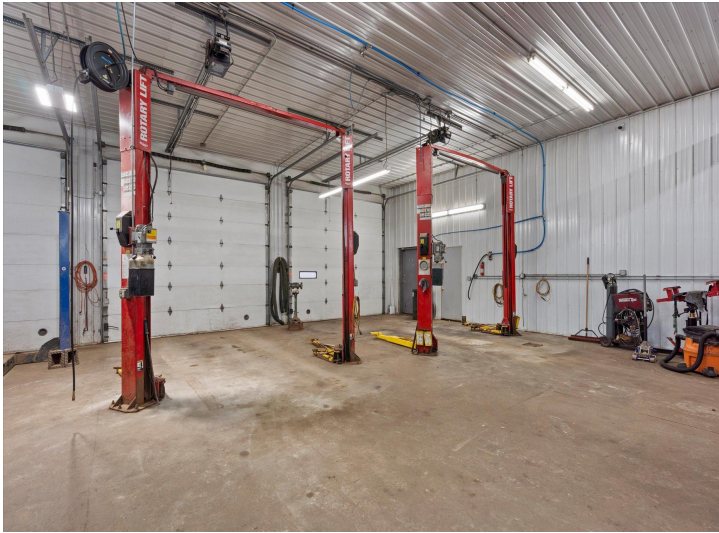
**\$599,900**  
MLS 7057213 Commercial  
10740 Brent Drive  
Brainerd MN 56401



website: [www.AffinityRealEstate.com](http://www.AffinityRealEstate.com) | email: [info@affinityrealestate.com](mailto:info@affinityrealestate.com) | office: 218-237-3333 | fax: 218-237-3377

**Affinity**  
REAL ESTATE INC

**\$599,900**  
MLS 7057213 Commercial  
10740 Brent Drive  
Brainerd MN 56401



website: [www.AffinityRealEstate.com](http://www.AffinityRealEstate.com) | email: [info@affinityrealestate.com](mailto:info@affinityrealestate.com) | office: 218-237-3333 | fax:218-237-3377



**\$599,900**  
MLS 7057213 Commercial  
10740 Brent Drive  
Brainerd MN 56401



website: [www.AffinityRealEstate.com](http://www.AffinityRealEstate.com) | email: [info@affinityrealestate.com](mailto:info@affinityrealestate.com) | office: 218-237-3333 | fax:218-237-3377



**\$599,900**  
MLS 7057213 Commercial  
10740 Brent Drive  
Brainerd MN 56401



website: [www.AffinityRealEstate.com](http://www.AffinityRealEstate.com) | email: [info@affinityrealestate.com](mailto:info@affinityrealestate.com) | office: 218-237-3333 | fax:218-237-3377



**\$599,900**  
MLS 7057213 Commercial  
10740 Brent Drive  
Brainerd MN 56401