



MLS 7057260 Residential

\$174,900

1,342 sq ft
3 bedrooms
1 baths

1101 Fillmore Street
Alexandria MN 56308

Status: Active

Description:

3 bedroom, 1 bath home with a 2 car garage situated on a huge corner lot! Recently refurbished with new paint throughout, this home is in great condition and move-in ready. A fantastic opportunity with plenty of space both inside and out.

Additional Details:

Year Built	1900
Lot Acres	14201
Lot Dimensions	90 x 158 x 86 x 158
Garage Stalls	2
School District	1015
Taxes	\$1,700
Taxes with Assessments	\$1,700
Tax Year	2026

Additional Features:

Fuel: Array **Heat:** Forced Air

Driving Directions:

From Highway 29 (Broadway Street) in Alexandria, head north toward downtown. Turn left (west) onto 3rd Avenue East (County Road 82) and continue for about half a mile to one mile. Then turn right onto Fillmore Street and proceed to 1101 Fillmore Street



Listed By:
Century 21 First Realty, Inc.

Affinity Real Estate Inc. participates in the Regional Multiple Listing Service of Minnesota, Inc Broker Reciprocity (sm) program, allowing us to display other broker's listings on our website. All properties are subject to prior sale, change or withdrawal.



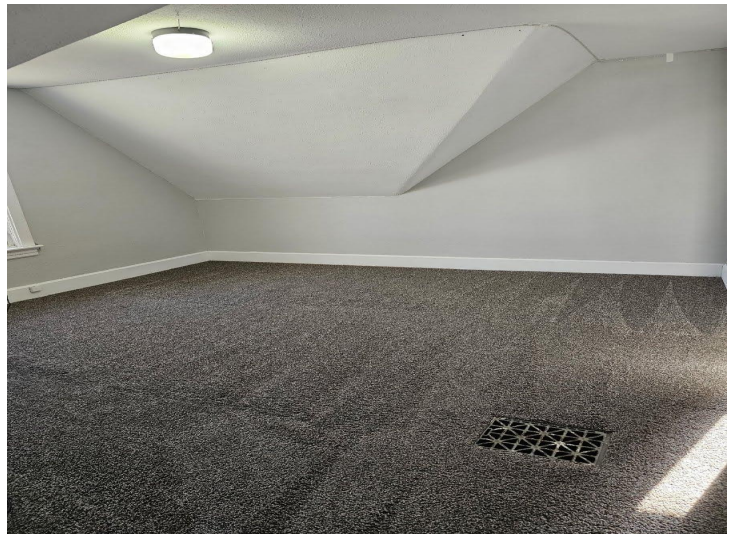
Call Affinity Real Estate

218-237-3333

info@affinityrealestate.com



Affinity Real Estate - 600 Park Avenue South - Park Rapids MN 56470



website: www.AffinityRealEstate.com | email: info@affinityrealestate.com | office: 218-237-3333 | fax:218-237-3377



\$174,900
MLS 7057260 Residential
1101 Fillmore Street
Alexandria MN 56308



website: www.AffinityRealEstate.com | email: info@affinityrealestate.com | office: 218-237-3333 | fax: 218-237-3377



\$174,900
MLS 7057260 Residential
1101 Fillmore Street
Alexandria MN 56308



website: www.AffinityRealEstate.com | email: info@affinityrealestate.com | office: 218-237-3333 | fax:218-237-3377



\$174,900
MLS 7057260 Residential
1101 Fillmore Street
Alexandria MN 56308