



MLS 7057296 Residential

\$375,000

3,384 sq ft
7 bedrooms
2 baths

25842 Co Hwy 21
Detroit Lakes MN 56501

Status: Active

Description:

Escape to the country with this spacious 7-bedroom hobby farm set on 15+ acres just 7 miles north of Detroit Lakes. This versatile property offers the perfect blend of comfort and functionality, featuring 2 - 2 stall garages and multiple outbuildings ideal for storage, equipment, or livestock. A charming chicken coop adds to the farmstead appeal, making it easy to embrace rural living. With plenty of room to grow, garden, or simply enjoy wide open spaces, this property is well-suited for hobby farmers, outdoor enthusiasts, or anyone seeking privacy and space without being far from town. Ask your Realtor about the HUGE seller credit for home updates!

Additional Details:

Year Built	1900
Lot Acres	15.6
Garage Stalls	4
School District	22
Taxes	\$2,236
Taxes with Assessments	\$2,236
Tax Year	2026

Additional Features:

Basement: Unfinished **Fuel:** Array **Garage:** 4 **Heat:** Forced Air **Sewer:** Tank with Drainage Field **Water:** Well **Air Conditioning:** Window Unit(s)

Driving Directions:

South of intersection 260th st and hwy 21



Listed By:
Park Co., REALTORS®

Affinity Real Estate Inc. participates in the Regional Multiple Listing Service of Minnesota, Inc Broker Reciprocity (sm) program, allowing us to display other broker's listings on our website. All properties are subject to prior sale, change or withdrawal.



Call Affinity Real Estate

218-237-3333

info@affinityrealestate.com



Affinity Real Estate - 600 Park Avenue South - Park Rapids MN 56470



website: www.AffinityRealEstate.com | email: info@affinityrealestate.com | office: 218-237-3333 | fax: 218-237-3377

Affinity
REAL ESTATE INC

\$375,000
MLS 7057296 Residential
25842 Co Hwy 21
Detroit Lakes MN 56501



website: www.AffinityRealEstate.com | email: info@affinityrealestate.com | office: 218-237-3333 | fax:218-237-3377

Affinity
REAL ESTATE INC

\$375,000
MLS 7057296 Residential
25842 Co Hwy 21
Detroit Lakes MN 56501



website: www.AffinityRealEstate.com | email: info@affinityrealestate.com | office: 218-237-3333 | fax: 218-237-3377

Affinity
REAL ESTATE INC

\$375,000
MLS 7057296 Residential
25842 Co Hwy 21
Detroit Lakes MN 56501



website: www.AffinityRealEstate.com | email: info@affinityrealestate.com | office: 218-237-3333 | fax:218-237-3377

Affinity
REAL ESTATE INC

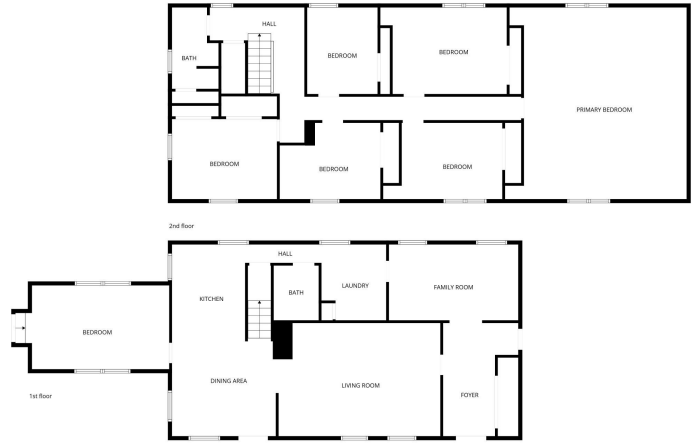
\$375,000
MLS 7057296 Residential
25842 Co Hwy 21
Detroit Lakes MN 56501



website: www.AffinityRealEstate.com | email: info@affinityrealestate.com | office: 218-237-3333 | fax:218-237-3377



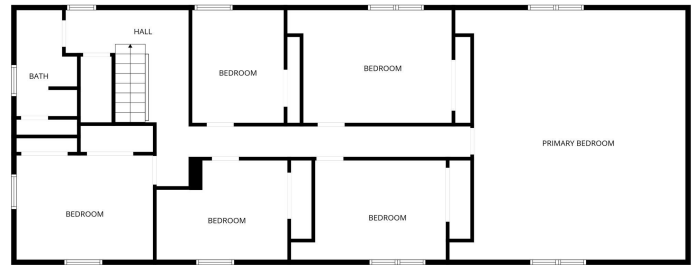
\$375,000
MLS 7057296 Residential
25842 Co Hwy 21
Detroit Lakes MN 56501



FLOOR PLAN CREATED BY CUBICASA APP. MEASUREMENTS DEEMED HIGHLY RELIABLE BUT NOT GUARANTEED.



FLOOR PLAN CREATED BY CUBICASA APP. MEASUREMENTS DEEMED HIGHLY RELIABLE BUT NOT GUARANTEED.



FLOOR PLAN CREATED BY CUBICASA APP. MEASUREMENTS DEEMED HIGHLY RELIABLE BUT NOT GUARANTEED.

website: www.AffinityRealEstate.com | email: info@affinityrealestate.com | office: 218-237-3333 | fax: 218-237-3377



\$375,000
 MLS 7057296 Residential
 25842 Co Hwy 21
 Detroit Lakes MN 56501