



MLS 7057390 Commercial

\$379,000

1401 Norwood St
Brainerd MN 56401

Status: Active

Description:

Excellent investment opportunity in the heart of the Brainerd Lakes Area. This well-maintained 6-unit property offers a strong unit mix with three two bedroom apartments, two one-bedroom units and one efficiency unit. Property has good rental history all units are month to month at this time. Additional lot is included in this property and could be developed for future use. Current owner provides his own lawn care and snow removal and would be available to contract that out in the future for any new owners. This property offers strong income potential in the highly desirable Brainerd Lakes Area. 48 hour notice for all showings.

Additional Details:

Year Built	1938
Lot Acres	7500
Lot Dimensions	50x150x50x150
School District	181
Taxes	\$3,741
Taxes with Assessments	\$3,766
Tax Year	2026

Additional Features:

Fuel: Natural Gas **Heat:** Forced Air **Sewer:** City Sewer/Connected **Water:** City Water/Connected **Air Conditioning:** None

Driving Directions:

From Hwy 210 in SE Brainerd, turn Right on SE 13th Street to Left on Norwood Street to #1401.



Listed By:
Your Home Sold Guaranteed Realty Exclusive

Affinity Real Estate Inc. participates in the Regional Multiple Listing Service of Minnesota, Inc Broker Reciprocity (sm) program, allowing us to display other broker's listings on our website. All properties are subject to prior sale, change or withdrawal.



Call Affinity Real Estate

218-237-3333

info@affinityrealestate.com



Affinity Real Estate - 600 Park Avenue South - Park Rapids MN 56470



website: www.AffinityRealEstate.com | email: info@affinityrealestate.com | office: 218-237-3333 | fax:218-237-3377

Affinity
REAL ESTATE INC

\$379,000
MLS 7057390 Commercial
1401 Norwood St
Brainerd MN 56401



website: www.AffinityRealEstate.com | email: info@affinityrealestate.com | office: 218-237-3333 | fax: 218-237-3377

Affinity
REAL ESTATE INC

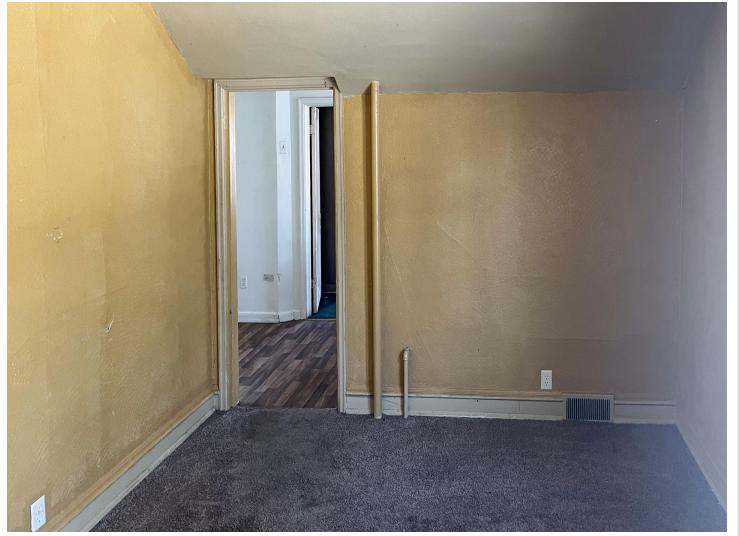
\$379,000
MLS 7057390 Commercial
1401 Norwood St
Brainerd MN 56401



website: www.AffinityRealEstate.com | email: info@affinityrealestate.com | office: 218-237-3333 | fax: 218-237-3377

Affinity
REAL ESTATE INC

\$379,000
MLS 7057390 Commercial
1401 Norwood St
Brainerd MN 56401



website: www.AffinityRealEstate.com | email: info@affinityrealestate.com | office: 218-237-3333 | fax: 218-237-3377

Affinity
REAL ESTATE INC

\$379,000
MLS 7057390 Commercial
1401 Norwood St
Brainerd MN 56401



website: www.AffinityRealEstate.com | email: info@affinityrealestate.com | office: 218-237-3333 | fax:218-237-3377

Affinity
REAL ESTATE INC

\$379,000
MLS 7057390 Commercial
1401 Norwood St
Brainerd MN 56401



website: www.AffinityRealEstate.com | email: info@affinityrealestate.com | office: 218-237-3333 | fax:218-237-3377



\$379,000
MLS 7057390 Commercial
1401 Norwood St
Brainerd MN 56401



website: www.AffinityRealEstate.com | email: info@affinityrealestate.com | office: 218-237-3333 | fax:218-237-3377



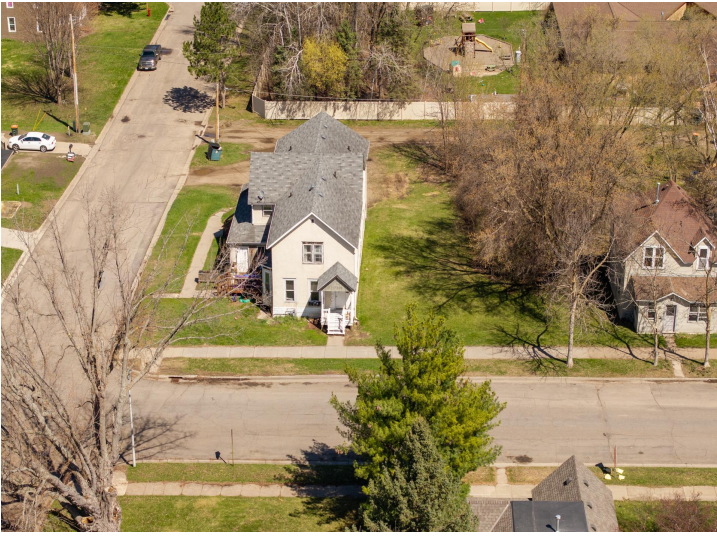
\$379,000
MLS 7057390 Commercial
1401 Norwood St
Brainerd MN 56401



website: www.AffinityRealEstate.com | email: info@affinityrealestate.com | office: 218-237-3333 | fax:218-237-3377



\$379,000
MLS 7057390 Commercial
1401 Norwood St
Brainerd MN 56401



website: www.AffinityRealEstate.com | email: info@affinityrealestate.com | office: 218-237-3333 | fax:218-237-3377



\$379,000
MLS 7057390 Commercial
1401 Norwood St
Brainerd MN 56401



website: www.AffinityRealEstate.com | email: info@affinityrealestate.com | office: 218-237-3333 | fax:218-237-3377



\$379,000
MLS 7057390 Commercial
1401 Norwood St
Brainerd MN 56401