



MLS 7057427 Land

**\$395,000**

36.68 Acres  
Raw Land

XXXX Pioneer Road  
Fergus Falls MN 56537

Status: Active

**Description:**

This prime 36 acre property in Fergus Falls sits directly in the path of progress, surrounded by established multi-family housing and commercial developments, making it a rare investment opportunity. The gently rolling landscape offers unlimited potential for a variety of uses, including homes, multi-family residential, or commercial development. Its strategic location near I-94 ensures easy access to Fargo/Moorhead or the Twin Cities. The property's proximity to local amenities, employment centers, and growing infrastructure further enhances its appeal, presenting endless possibilities for developers looking to capitalize on this dynamic market.

**Additional Details:**

Lot Acres	36.68
Lot Dimensions	36.6800
School District	1944
Taxes	\$1,906
Taxes with Assessments	\$1,906
Tax Year	2026

**Additional Features:**

**Driving Directions:**

From town of Fergus Falls, head west on W Lincoln Ave/Viking Trail toward S Vine St. Turn N onto Western Avenue. Turn E onto Pioneer Rd.



Listed By:  
Keller Williams Realty Professionals

Affinity Real Estate Inc. participates in the Regional Multiple Listing Service of Minnesota, Inc Broker Reciprocity (sm) program, allowing us to display other broker's listings on our website. All properties are subject to prior sale, change or withdrawal.



Call Affinity Real Estate

**218-237-3333**

[info@affinityrealestate.com](mailto:info@affinityrealestate.com)



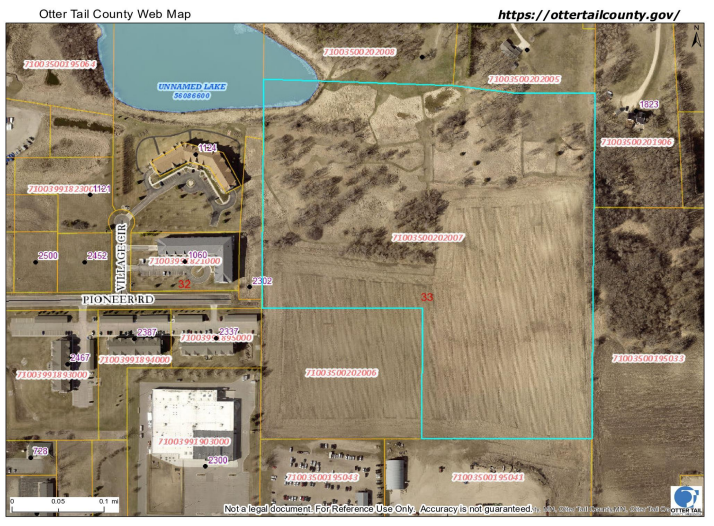
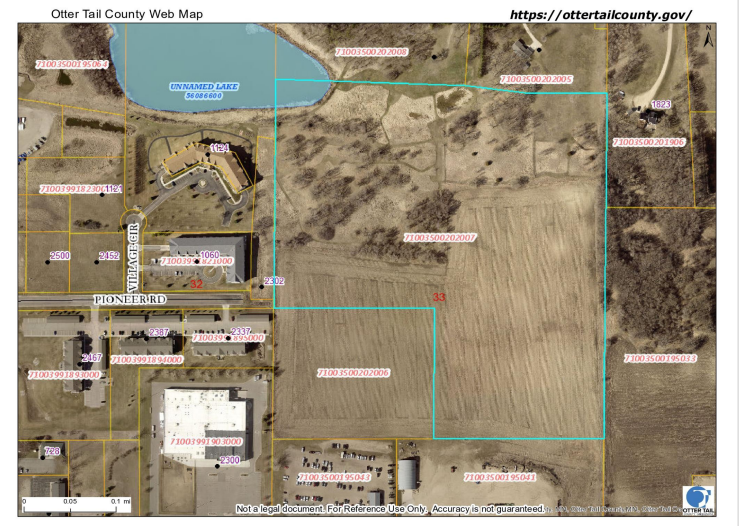
Affinity Real Estate - 600 Park Avenue South - Park Rapids MN 56470



website: [www.AffinityRealEstate.com](http://www.AffinityRealEstate.com) | email: [info@affinityrealestate.com](mailto:info@affinityrealestate.com) | office: 218-237-3333 | fax:218-237-3377



**\$395,000**  
MLS 7057427 Land  
XXXX Pioneer Road  
Fergus Falls MN 56537



Otter Tail County Web Map

<https://ottertailcounty.gov/>

website: [www.AffinityRealEstate.com](http://www.AffinityRealEstate.com) | email: [info@affinityrealestate.com](mailto:info@affinityrealestate.com) | office: 218-237-3333 | fax:218-237-3377



**\$395,000**  
MLS 7057427 Land  
XXXX Pioneer Road  
Fergus Falls MN 56537