



MLS 7057587 Lake Home

\$1,400,000

2,653 sq ft
4 bedrooms
4 baths

5833 Bedman Drive
Alexandria MN 56308

Waterfront: Ida

Status: Pending

Description:

Welcome to your dream lake home on the highly sought-after shores of Lake Ida—where comfort, craftsmanship, and effortless lakeside living come together. This beautifully designed 4-bedroom, 4-bathroom home offers the perfect blend of luxury and functionality, set on a level lakeshore for easy access to the water. Thoughtfully designed with handicap accessibility in mind, the home offers ease of movement and comfortable living for all. Inside, you'll find quality finishes throughout, including custom cabinetry, stainless steel appliances, and a spacious kitchen anchored by a large island—ideal for gathering with family and friends. The open-concept living area is warmed by a cozy gas fireplace and filled with natural light, while the primary suite provides a private retreat with stunning lake views to wake up to each morning. In-floor heat ensures year-round comfort, making this home as practical as it is inviting. Designed with both recreation and convenience in mind, the home also features a fully equipped fish cleaning room complete with its own bathroom. This heated and cooled space includes cabinetry and a dedicated refrigerator—perfect for processing the day's catch while keeping the rest of the home pristine. Above the expansive 1,290-square-foot garage, you'll find a 581 sq. foot versatile bonus room & bathroom—ideal for guests, a game room, home office, or additional sleeping space. Step outside to a generous lakeside patio, complete with an automatic awning—perfect for relaxing afternoons or hosting unforgettable evenings. Designed with entertaining in mind, this property truly shines both indoors and out. Car enthusiasts and hobbyists will appreciate the garage itself, featuring a single overhead door with screened openings on both the lakeside and roadside—offering versatility, airflow, and unique functionality. Located just 10 minutes from town, this well-built home combines peaceful lakefront living with convenient access to everyday amenities. Set on one of the area's premier lakes, this is a rare opportunity to own a property that checks every box. Experience the best of lake life—schedule your private showing today. Selling agent is related to sellers.

Additional Details:

Year Built	2017
Lot Acres	0.46
Lot Dimensions	113 173 100 207
Garage Stalls	4
School District	206
Taxes	\$8,170
Taxes with Assessments	\$8,170



Listed By: 2025
Edina Realty, Inc.

Additional Features:

Affinity Real Estate Inc. participates in the Regional Multiple Listing Service of Minnesota, the Broker Reciprocity (BRC) program, allowing us to display other broker's listings on our website. All properties are subject to prior sale, change or withdrawal.

Driving Directions:

From Broadway Street in Alexandria, turn left on 3rd Ave W, turn right on Co Rd 22NW, Turn right on W Lake Louise Dr NW, Continue onto Bedman Dr NW, Turn left to stay on Bedman Dr NW to property on the right.



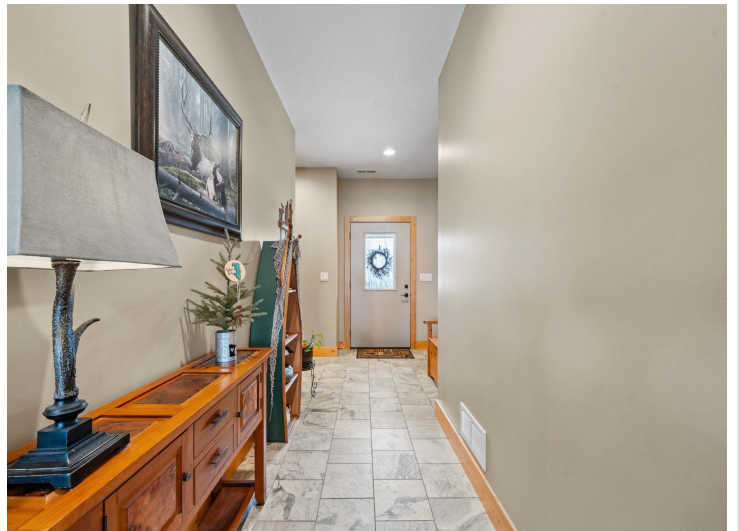
Call Affinity Real Estate

218-237-3333

info@affinityrealestate.com



Affinity Real Estate - 600 Park Avenue South - Park Rapids MN 56470



website: www.AffinityRealEstate.com | email: info@affinityrealestate.com | office: 218-237-3333 | fax:218-237-3377

Affinity
REAL ESTATE INC

\$1,400,000
MLS 7057587 Lake Home
5833 Bedman Drive
Alexandria MN 56308



website: www.AffinityRealEstate.com | email: info@affinityrealestate.com | office: 218-237-3333 | fax:218-237-3377



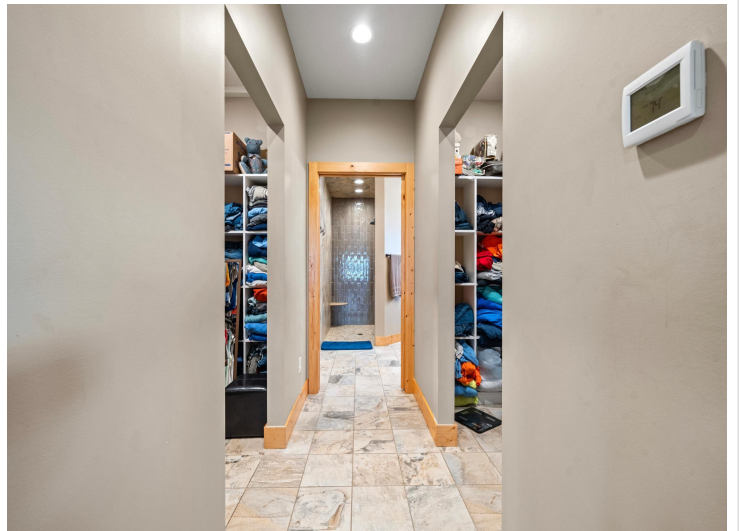
\$1,400,000
MLS 7057587 Lake Home
5833 Bedman Drive
Alexandria MN 56308



website: www.AffinityRealEstate.com | email: info@affinityrealestate.com | office: 218-237-3333 | fax: 218-237-3377

Affinity
REAL ESTATE INC

\$1,400,000
MLS 7057587 Lake Home
5833 Bedman Drive
Alexandria MN 56308



website: www.AffinityRealEstate.com | email: info@affinityrealestate.com | office: 218-237-3333 | fax:218-237-3377

Affinity
REAL ESTATE INC

\$1,400,000
MLS 7057587 Lake Home
5833 Bedman Drive
Alexandria MN 56308



website: www.AffinityRealEstate.com | email: info@affinityrealestate.com | office: 218-237-3333 | fax:218-237-3377



\$1,400,000
MLS 7057587 Lake Home
5833 Bedman Drive
Alexandria MN 56308



website: www.AffinityRealEstate.com | email: info@affinityrealestate.com | office: 218-237-3333 | fax:218-237-3377

Affinity
REAL ESTATE INC

\$1,400,000
MLS 7057587 Lake Home
5833 Bedman Drive
Alexandria MN 56308



website: www.AffinityRealEstate.com | email: info@affinityrealestate.com | office: 218-237-3333 | fax:218-237-3377

Affinity
REAL ESTATE INC

\$1,400,000
MLS 7057587 Lake Home
5833 Bedman Drive
Alexandria MN 56308



website: www.AffinityRealEstate.com | email: info@affinityrealestate.com | office: 218-237-3333 | fax: 218-237-3377

Affinity
REAL ESTATE INC

\$1,400,000
MLS 7057587 Lake Home
5833 Bedman Drive
Alexandria MN 56308



website: www.AffinityRealEstate.com | email: info@affinityrealestate.com | office: 218-237-3333 | fax:218-237-3377



\$1,400,000
MLS 7057587 Lake Home
5833 Bedman Drive
Alexandria MN 56308



website: www.AffinityRealEstate.com | email: info@affinityrealestate.com | office: 218-237-3333 | fax: 218-237-3377

Affinity
REAL ESTATE INC

\$1,400,000
MLS 7057587 Lake Home
5833 Bedman Drive
Alexandria MN 56308



website: www.AffinityRealEstate.com | email: info@affinityrealestate.com | office: 218-237-3333 | fax:218-237-3377



\$1,400,000
MLS 7057587 Lake Home
5833 Bedman Drive
Alexandria MN 56308



website: www.AffinityRealEstate.com | email: info@affinityrealestate.com | office: 218-237-3333 | fax:218-237-3377

Affinity
REAL ESTATE INC

\$1,400,000
MLS 7057587 Lake Home
5833 Bedman Drive
Alexandria MN 56308



website: www.AffinityRealEstate.com | email: info@affinityrealestate.com | office: 218-237-3333 | fax: 218-237-3377

Affinity
REAL ESTATE INC

\$1,400,000
MLS 7057587 Lake Home
5833 Bedman Drive
Alexandria MN 56308



website: www.AffinityRealEstate.com | email: info@affinityrealestate.com | office: 218-237-3333 | fax:218-237-3377



\$1,400,000
MLS 7057587 Lake Home
5833 Bedman Drive
Alexandria MN 56308