



MLS 7057601 Residential

\$325,000

1,323 sq ft
3 bedrooms
2 baths

5992 Annalee Lane
Bemidji MN 56601

Status: Active

Description:

Brand new, all on one level!! Don't miss this 3 bed 2 bath new build just West of Bemidji. Featuring just under 1,400 square feet, open concept, primary suite with walk in closet and private bath. Comes with all appliances including washer and dryer and water softener. Double attached garage ready for for a ceiling mount heater(not included). With a front covered entry and a timber frame covered porch in the rear, this home will not disappoint! Constructed of Extreme Panels (SIP), this home is not only beautiful, but extremely efficient. All this on a stellar 1.8 acre lot. Will be ready for an owner the end of May. See the virtual tour for a similar build and call for your private tour today!

Additional Details:

Year Built	2026
Lot Acres	1.81
Lot Dimensions	335x175x345x300
Garage Stalls	2
School District	1386
Taxes	\$246
Taxes with Assessments	\$246
Tax Year	2026

Additional Features:

Basement: None **Fuel:** Array **Garage:** 2 **Heat:** Forced Air **Sewer:** Private Sewer, Tank with Drainage Field **Water:** 4-Inch Submersible, Private, Well **Air Conditioning:** Central Air

Driving Directions:

West on Division, North on Archery Rd NW, East on Mid-Valley Ln, South on Annalee Lane to Property on the South side of the road.



Listed By:
Grimes Realty

Affinity Real Estate Inc. participates in the Regional Multiple Listing Service of Minnesota, Inc Broker Reciprocity (sm) program, allowing us to display other broker's listings on our website. All properties are subject to prior sale, change or withdrawal.



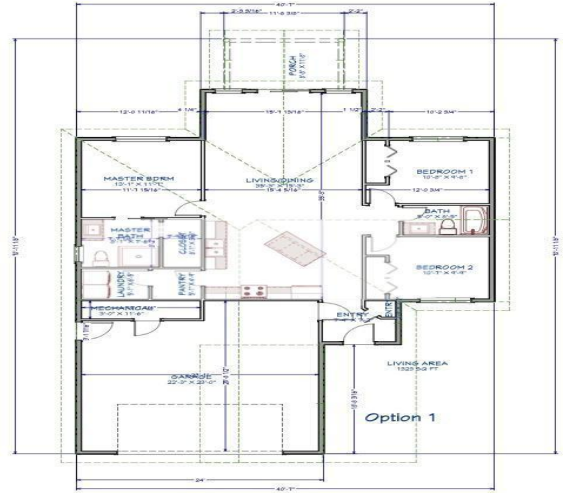
Call Affinity Real Estate

218-237-3333

info@affinityrealestate.com



Affinity Real Estate - 600 Park Avenue South - Park Rapids MN 56470



website: www.AffinityRealEstate.com | email: info@affinityrealestate.com | office: 218-237-3333 | fax:218-237-3377



\$325,000
MLS 7057601 Residential
5992 Annalee Lane
Bemidji MN 56601