



MLS 7057751 Residential

\$714,900

3,230 sq ft
3 bedrooms
2 baths

11241 County 77
Nisswa MN 56468

Status: Active

Description:

Welcome to the Lakes Area number one hot spot! Set in the heart of northern lake country, this stately 3-bedroom, 2-bath home offers the perfect blend of modern comfort and serene outdoor living on six private acres. Thoughtfully updated throughout, the home features a spacious, light-filled interior with ample room to relax, entertain, and grow. Step outside and enjoy expansive grounds ideal for recreation, gardening, or simply taking in the peaceful surroundings. Two oversized garages provide abundant space for vehicles, storage, or a workshop setup—perfect for embracing the lake country lifestyle.

Located near the Gull Lake trail system, this property offers easy access to year-round outdoor activities, from biking and hiking to snowmobiling and more. Whether you're looking for a full-time residence or a private retreat, this property delivers space, convenience, and the natural beauty of Minnesota's northwoods.

Additional Details:

Year Built	1984
Lot Acres	6.51
Lot Dimensions	975x290x1035x285
Garage Stalls	6
School District	116
Taxes	\$2,368
Taxes with Assessments	\$2,434
Tax Year	2025

Additional Features:

Basement: Block, Finished, Full, Walkout **Fuel:** Natural Gas **Garage:** 6 **Heat:** Forced Air **Sewer:** Tank with Drainage Field **Water:** Drilled, Well
Air Conditioning: Central Air

Driving Directions:

Fron



Listed By:
Aspen Real Estate Svcs, LLC

Affinity Real Estate Inc. participates in the Regional Multiple Listing Service of Minnesota, Inc Broker Reciprocity (sm) program, allowing us to display other broker's listings on our website. All properties are subject to prior sale, change or withdrawal.



Call Affinity Real Estate

218-237-3333

info@affinityrealestate.com



Affinity Real Estate - 600 Park Avenue South - Park Rapids MN 56470



website: www.AffinityRealEstate.com | email: info@affinityrealestate.com | office: 218-237-3333 | fax:218-237-3377



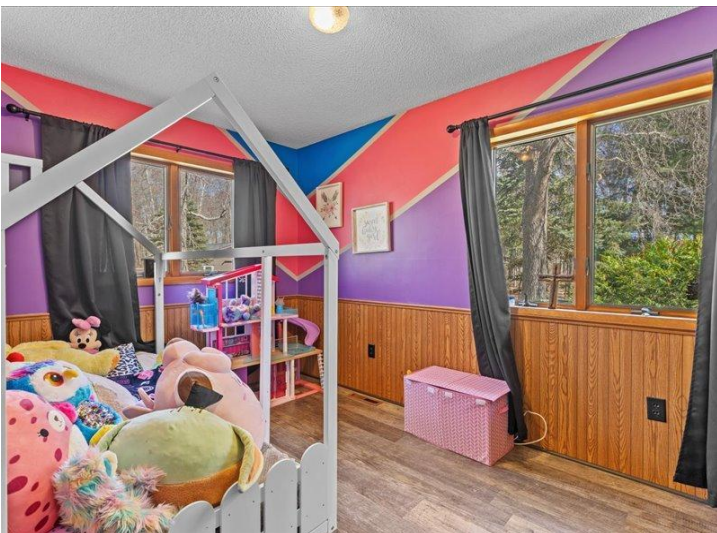
\$714,900
MLS 7057751 Residential
11241 County 77
Nisswa MN 56468



website: www.AffinityRealEstate.com | email: info@affinityrealestate.com | office: 218-237-3333 | fax: 218-237-3377

Affinity
REAL ESTATE INC

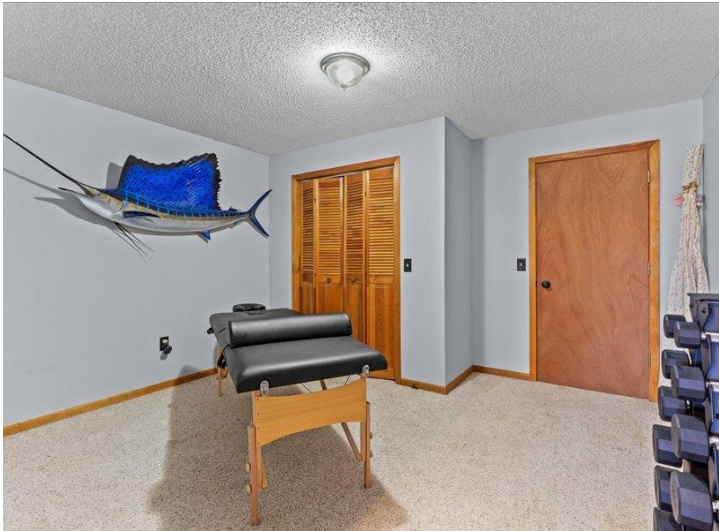
\$714,900
MLS 7057751 Residential
11241 County 77
Nisswa MN 56468



website: www.AffinityRealEstate.com | email: info@affinityrealestate.com | office: 218-237-3333 | fax:218-237-3377

Affinity
REAL ESTATE INC

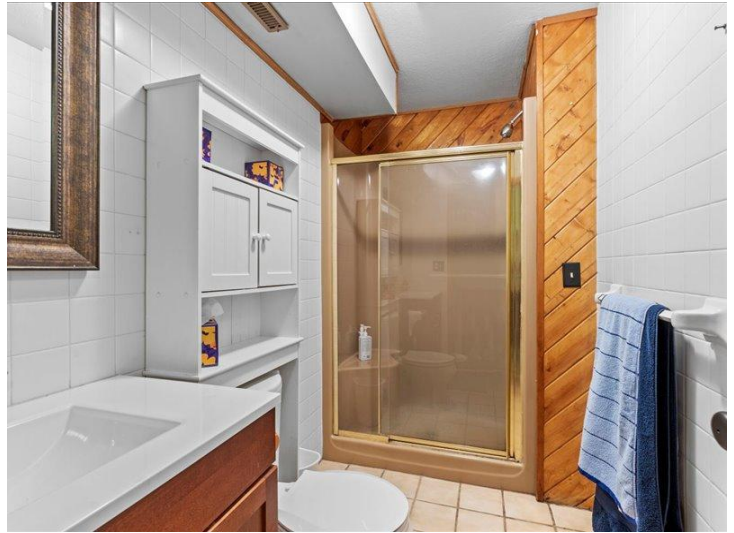
\$714,900
MLS 7057751 Residential
11241 County 77
Nisswa MN 56468



website: www.AffinityRealEstate.com | email: info@affinityrealestate.com | office: 218-237-3333 | fax:218-237-3377

Affinity
REAL ESTATE INC

\$714,900
MLS 7057751 Residential
11241 County 77
Nisswa MN 56468



website: www.AffinityRealEstate.com | email: info@affinityrealestate.com | office: 218-237-3333 | fax:218-237-3377

Affinity
REAL ESTATE INC

\$714,900
MLS 7057751 Residential
11241 County 77
Nisswa MN 56468



website: www.AffinityRealEstate.com | email: info@affinityrealestate.com | office: 218-237-3333 | fax:218-237-3377



\$714,900
MLS 7057751 Residential
11241 County 77
Nisswa MN 56468



website: www.AffinityRealEstate.com | email: info@affinityrealestate.com | office: 218-237-3333 | fax:218-237-3377



\$714,900
MLS 7057751 Residential
11241 County 77
Nisswa MN 56468



website: www.AffinityRealEstate.com | email: info@affinityrealestate.com | office: 218-237-3333 | fax:218-237-3377



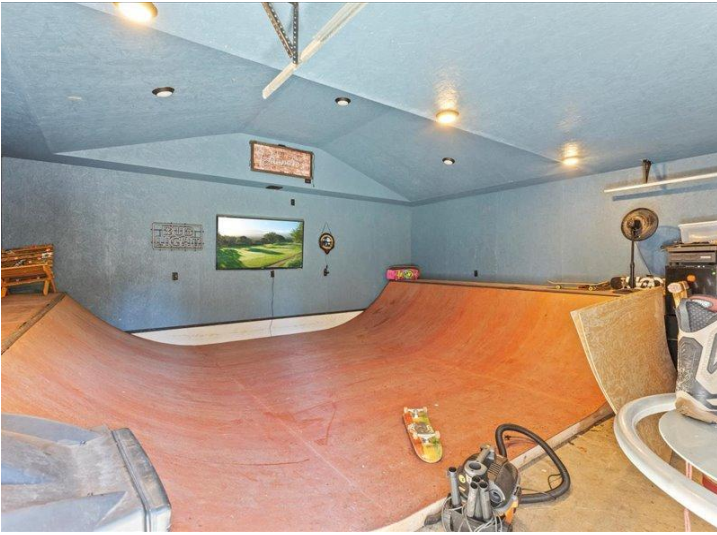
\$714,900
MLS 7057751 Residential
11241 County 77
Nisswa MN 56468



website: www.AffinityRealEstate.com | email: info@affinityrealestate.com | office: 218-237-3333 | fax:218-237-3377

Affinity
REAL ESTATE INC

\$714,900
MLS 7057751 Residential
11241 County 77
Nisswa MN 56468



website: www.AffinityRealEstate.com | email: info@affinityrealestate.com | office: 218-237-3333 | fax:218-237-3377



\$714,900
MLS 7057751 Residential
11241 County 77
Nisswa MN 56468