



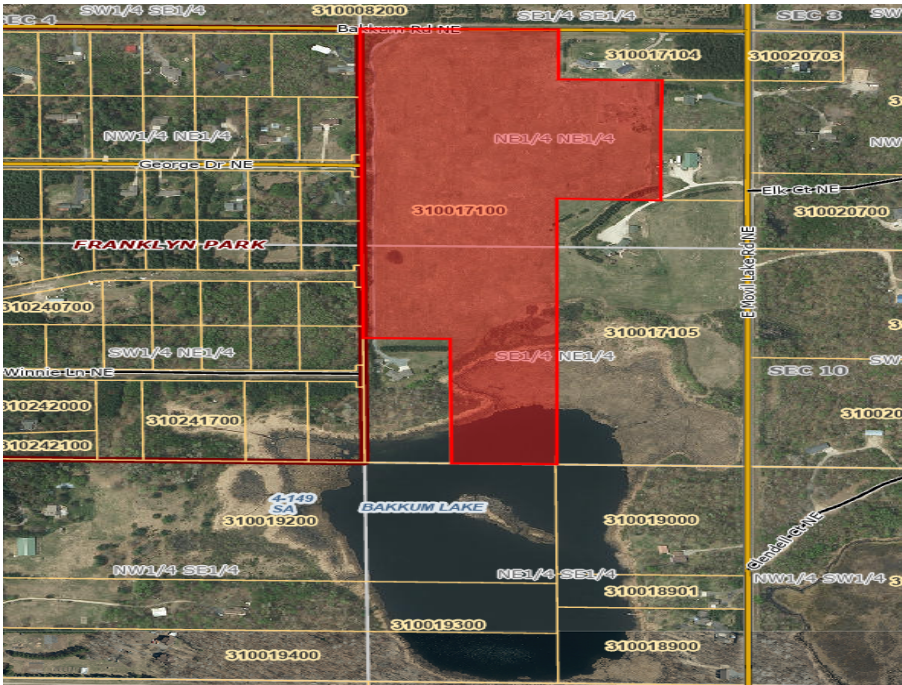
MLS 7057757 Land

\$255,000

41.22 Acres
Raw Land

TBD Bakkum Road
Bemidji MN 56601

Status: Active



Description:

Opportunity for picturesque acreage (zoned R-2) on Bakkum Lake just minutes from town. Approximately 35 acres of high, rolling meadow. Perfect setting for building your dream home or as a development investment. Raw land with paved road access. Near Lake Bemidji State Park, Bemidji Town & Country Club, Movil Maze Recreation Area. Fishing, hunting, boating, cross country skiing, mountain biking, jogging/walking trails nearby. Five miles to medical facilities, restaurants and shopping and all the Bemidji area has to offer.

Additional Details:

Lot Acres	41.22
Lot Dimensions	1870x695x295x300x700x300x595x350x7 40x295
School District	1386
Taxes	\$808
Taxes with Assessments	\$808
Tax Year	2026

Additional Features:

Driving Directions:

North on Irvine Ave to Grove St, right on Grove; left on pond road, right on Bakkum Road. Property begins at the 476 address marker on the south side of the road.



Listed By:
Crystal Lakes Real Estate

Affinity Real Estate Inc. participates in the Regional Multiple Listing Service of Minnesota, Inc Broker Reciprocity (sm) program, allowing us to display other broker's listings on our website. All properties are subject to prior sale, change or withdrawal.



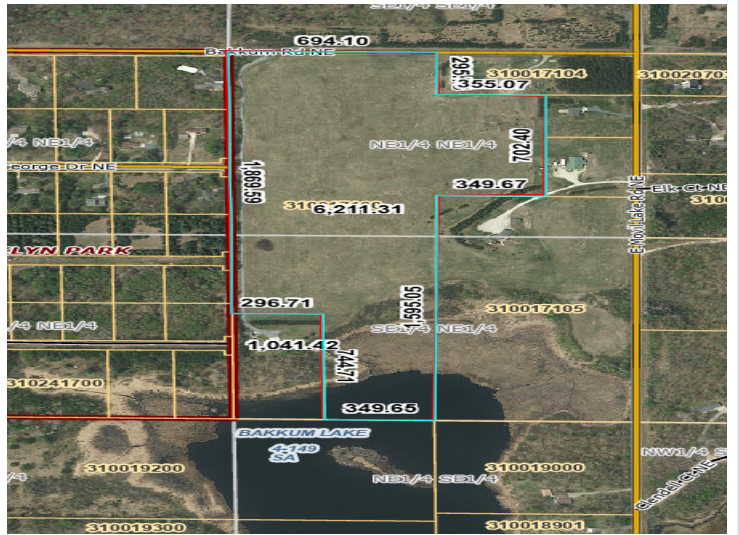
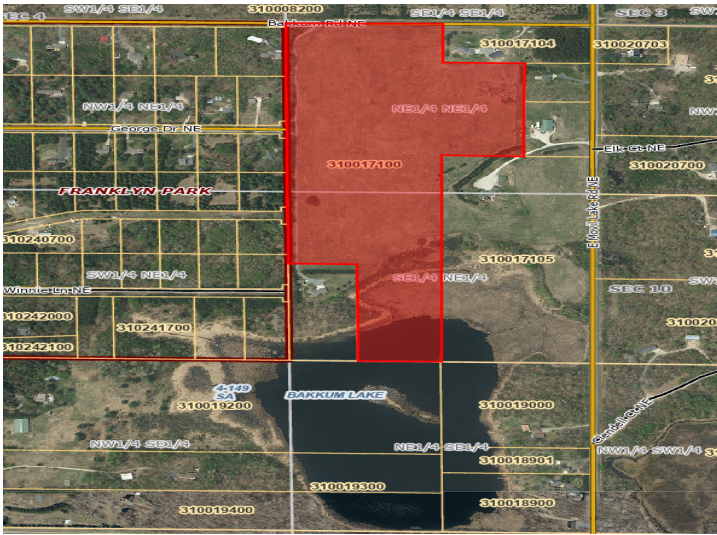
Call Affinity Real Estate

218-237-3333

info@affinityrealestate.com



Affinity Real Estate - 600 Park Avenue South - Park Rapids MN 56470



website: www.AffinityRealEstate.com | email: info@affinityrealestate.com | office: 218-237-3333 | fax: 218-237-3377



\$255,000
 MLS 7057757 Land
 TBD Bakkum Road
 Bemidji MN 56601