



MLS 7057834 Lake Home

**\$725,000**

2,592 sq ft  
4 bedrooms  
3 baths

17190 Gayles Path  
Brainerd MN 56401

Waterfront: Upper South Long

Status: Pending

**Description:**

For the first time in over three decades, discover a rare opportunity to own a premier 1.25-acre estate on the shores of Upper South Long Lake. Boasting 143 feet of lake frontage and a private lot, this is the legacy property your family has been waiting for. The residence exudes warmth and quality, featuring rich natural woodwork throughout and a kitchen anchored by elegant granite countertops. Relax by one of the two cozy fireplaces or enjoy the sunrise from the expansive composite decking. Beyond the main home, the property includes a substantial 30x40 outbuilding—ideal for boat storage, a workshop, or all your Up North toys. Whether you're fishing for walleye or hosting a multi-generational gathering, this well-laid-out gem offers the perfect blend of luxury and lakeside tradition. Don't miss your chance to start your own 30-year tradition on Upper South Long.

**Additional Details:**

Year Built	1988
Lot Acres	1.25
Lot Dimensions	55x515x143xirr
Garage Stalls	6
School District	181
Taxes	\$3,780
Taxes with Assessments	\$3,780
Tax Year	2025

**Additional Features:**

**Fuel:** Propane **Heat:** Forced Air, Fireplace(s)

**Driving Directions:**

From Hwy 25 and Hwy 18 Junction, go East on Hwy 18, go 4.5 miles, turn right on Cty Road 23, go 1.9 miles, turn left on Cty Road 24, go 1 Mile, turn right on Rognaldson Road, go .2 mile, turn left on Leonard Lane, go .4 mile to home on left



Listed By:  
Edina Realty, Inc.

Affinity Real Estate Inc. participates in the Regional Multiple Listing Service of Minnesota, Inc Broker Reciprocity (sm) program, allowing us to display other broker's listings on our website. All properties are subject to prior sale, change or withdrawal.



**Call Affinity Real Estate**

**218-237-3333**

**info@affinityrealestate.com**



**Affinity Real Estate - 600 Park Avenue South - Park Rapids MN 56470**



website: [www.AffinityRealEstate.com](http://www.AffinityRealEstate.com) | email: [info@affinityrealestate.com](mailto:info@affinityrealestate.com) | office: 218-237-3333 | fax:218-237-3377



**\$725,000**  
MLS 7057834 Lake Home  
17190 Gayles Path  
Brainerd MN 56401



website: [www.AffinityRealEstate.com](http://www.AffinityRealEstate.com) | email: [info@affinityrealestate.com](mailto:info@affinityrealestate.com) | office: 218-237-3333 | fax:218-237-3377

**Affinity**  
REAL ESTATE INC

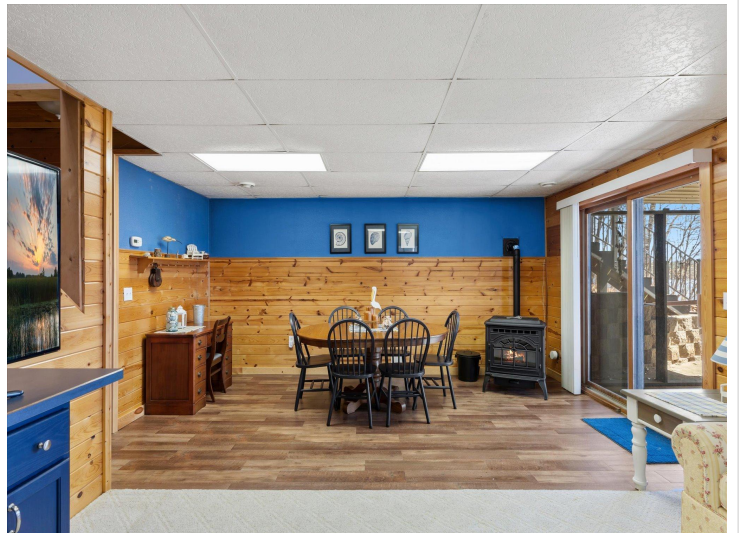
**\$725,000**  
MLS 7057834 Lake Home  
17190 Gayles Path  
Brainerd MN 56401



website: [www.AffinityRealEstate.com](http://www.AffinityRealEstate.com) | email: [info@affinityrealestate.com](mailto:info@affinityrealestate.com) | office: 218-237-3333 | fax:218-237-3377

**Affinity**  
REAL ESTATE INC

**\$725,000**  
MLS 7057834 Lake Home  
17190 Gayles Path  
Brainerd MN 56401



website: [www.AffinityRealEstate.com](http://www.AffinityRealEstate.com) | email: [info@affinityrealestate.com](mailto:info@affinityrealestate.com) | office: 218-237-3333 | fax:218-237-3377

**Affinity**  
REAL ESTATE INC

**\$725,000**  
MLS 7057834 Lake Home  
17190 Gayles Path  
Brainerd MN 56401



website: [www.AffinityRealEstate.com](http://www.AffinityRealEstate.com) | email: [info@affinityrealestate.com](mailto:info@affinityrealestate.com) | office: 218-237-3333 | fax:218-237-3377



**\$725,000**  
MLS 7057834 Lake Home  
17190 Gayles Path  
Brainerd MN 56401



website: [www.AffinityRealEstate.com](http://www.AffinityRealEstate.com) | email: [info@affinityrealestate.com](mailto:info@affinityrealestate.com) | office: 218-237-3333 | fax:218-237-3377



**\$725,000**  
MLS 7057834 Lake Home  
17190 Gayles Path  
Brainerd MN 56401



website: [www.AffinityRealEstate.com](http://www.AffinityRealEstate.com) | email: [info@affinityrealestate.com](mailto:info@affinityrealestate.com) | office: 218-237-3333 | fax:218-237-3377



**\$725,000**  
MLS 7057834 Lake Home  
17190 Gayles Path  
Brainerd MN 56401