



MLS 7058019 Residential

**\$699,000**

3,026 sq ft  
3 bedrooms  
3 baths

16188 Svend Lane  
Evansville MN 56326

Status: Active

**Description:**

Stowed away on a quiet and enchanting Stowe Lake is a dream property awaiting its new proud owners. This majestic lakeshore is a true fairytale and the home tells a story of its own. A walk-out patio and main level walk-out deck provide multiple exterior relaxation and entertainment options. Inside you will find a large open concept upper level with a beautiful master suite complete with walk-in closet, shower and jacuzzi tub! Vaulted ceilings, amazing lake views and a large heated garage just add to this great package. With 183' of lakeshore fully irrigated yard and a sandy beach, you will not be able to find a better lake home at the price! Stowe Lake offers excellent fishing and recreation alike and to top this property off, the road adjacent to the driveway is tarred! Come check this stunner out as it works perfectly as a year around home or seasonal lake home for all ages with the gentle slope to the water!

**Additional Details:**

Year Built	1995
Lot Acres	1.56
Lot Dimensions	70 502 183 578
Garage Stalls	2
School District	1316
Taxes	\$5,254
Taxes with Assessments	\$5,254
Tax Year	2026

**Additional Features:**

**Basement:** Finished, Full, Walkout **Fuel:** Array **Garage:** 2 **Heat:** Forced Air, In-Floor Heating **Sewer:** Private Sewer **Water:** Private **Air Conditioning:** Central Air

**Driving Directions:**

West on 82 to Brandon. North at stop sign to left on 16. Left on Wolf Creek Rd NW to left on Svend Dr. Right on Svend Ln to home on left.



Listed By:  
DirectByOwner.com, Inc. / Montgomery & Associat

Affinity Real Estate Inc. participates in the Regional Multiple Listing Service of Minnesota, Inc Broker Reciprocity (sm) program, allowing us to display other broker's listings on our website. All properties are subject to prior sale, change or withdrawal.



Call Affinity Real Estate

**218-237-3333**

[info@affinityrealestate.com](mailto:info@affinityrealestate.com)



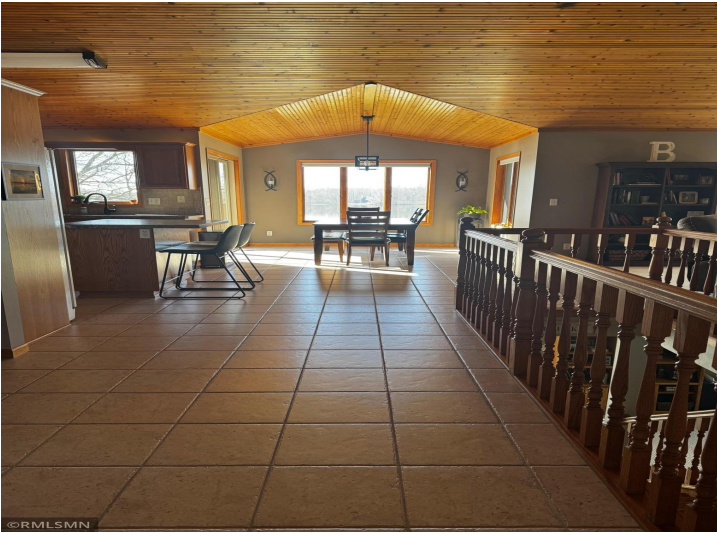
Affinity Real Estate - 600 Park Avenue South - Park Rapids MN 56470



website: [www.AffinityRealEstate.com](http://www.AffinityRealEstate.com) | email: [info@affinityrealestate.com](mailto:info@affinityrealestate.com) | office: 218-237-3333 | fax:218-237-3377



**\$699,000**  
MLS 7058019 Residential  
16188 Svend Lane  
Evansville MN 56326



website: [www.AffinityRealEstate.com](http://www.AffinityRealEstate.com) | email: [info@affinityrealestate.com](mailto:info@affinityrealestate.com) | office: 218-237-3333 | fax: 218-237-3377

**Affinity**  
REAL ESTATE INC

**\$699,000**  
MLS 7058019 Residential  
16188 Svend Lane  
Evansville MN 56326



website: [www.AffinityRealEstate.com](http://www.AffinityRealEstate.com) | email: [info@affinityrealestate.com](mailto:info@affinityrealestate.com) | office: 218-237-3333 | fax:218-237-3377

**Affinity**  
REAL ESTATE INC

**\$699,000**  
MLS 7058019 Residential  
16188 Svend Lane  
Evansville MN 56326



website: [www.AffinityRealEstate.com](http://www.AffinityRealEstate.com) | email: [info@affinityrealestate.com](mailto:info@affinityrealestate.com) | office: 218-237-3333 | fax:218-237-3377

**Affinity**  
REAL ESTATE INC

**\$699,000**  
MLS 7058019 Residential  
16188 Svend Lane  
Evansville MN 56326



website: [www.AffinityRealEstate.com](http://www.AffinityRealEstate.com) | email: [info@affinityrealestate.com](mailto:info@affinityrealestate.com) | office: 218-237-3333 | fax:218-237-3377



**\$699,000**  
MLS 7058019 Residential  
16188 Svend Lane  
Evansville MN 56326