



MLS 7058082 Residential

\$215,000

1,252 sq ft
3 bedrooms
2 baths

924 King Avenue
Wadena MN 56482

Status: Active

Description:

Welcome home to this charming 3-bedroom, 2-bath property. All three bedrooms are conveniently located on the main level, complemented by beautiful hardwood floors that add warmth and character throughout. This property features three garage stalls, including an attached garage for everyday convenience and a detached two-stall garage offering additional space for vehicles, storage, or hobbies. The unfinished basement provides an opportunity to build equity and customize the space to fit your needs. Whether that's a bonus room, office, or additional living area. Laundry is already located in the basement for added functionality. Blending character with opportunity, this home offers a great starting point with the ability to grow and personalize over time.

Additional Details:

Year Built	1962
Lot Acres	0.267
Lot Dimensions	95x123
Garage Stalls	3
School District	2155
Taxes	\$1,852
Taxes with Assessments	\$1,852
Tax Year	2025

Additional Features:

Basement: Block, Sump Pump, Unfinished **Fuel:** Natural Gas **Garage:** 3 **Heat:** Forced Air **Sewer:** City Sewer/Connected **Water:** City Water/Connected **Air Conditioning:** Window Unit(s)

Driving Directions:

From Hwy 10 head west on Jefferson St, take a right on King Ave SW, then home will be on the right.



Listed By:
LPT Realty, LLC.

Affinity Real Estate Inc. participates in the Regional Multiple Listing Service of Minnesota, Inc Broker Reciprocity (sm) program, allowing us to display other broker's listings on our website. All properties are subject to prior sale, change or withdrawal.



Call Affinity Real Estate

218-237-3333

info@affinityrealestate.com



Affinity Real Estate - 600 Park Avenue South - Park Rapids MN 56470



website: www.AffinityRealEstate.com | email: info@affinityrealestate.com | office: 218-237-3333 | fax: 218-237-3377

Affinity
REAL ESTATE INC

\$215,000
MLS 7058082 Residential
924 King Avenue
Wadena MN 56482



website: www.AffinityRealEstate.com | email: info@affinityrealestate.com | office: 218-237-3333 | fax:218-237-3377



\$215,000
MLS 7058082 Residential
924 King Avenue
Wadena MN 56482



website: www.AffinityRealEstate.com | email: info@affinityrealestate.com | office: 218-237-3333 | fax:218-237-3377

Affinity
REAL ESTATE INC

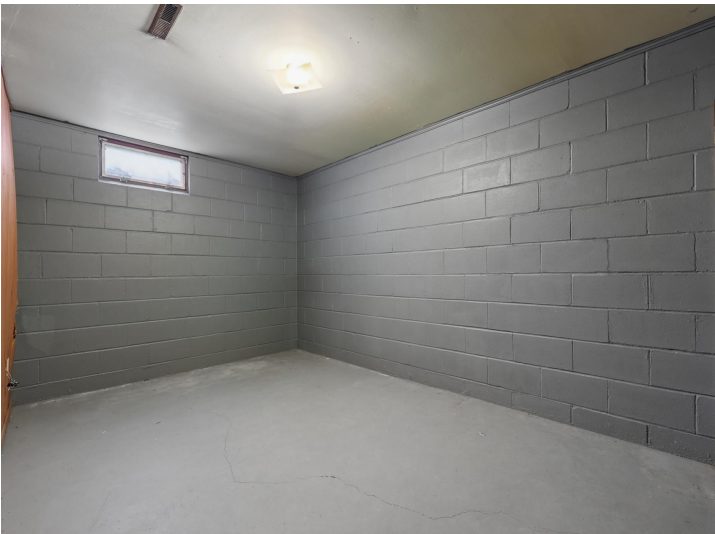
\$215,000
MLS 7058082 Residential
924 King Avenue
Wadena MN 56482



website: www.AffinityRealEstate.com | email: info@affinityrealestate.com | office: 218-237-3333 | fax:218-237-3377

Affinity
REAL ESTATE INC

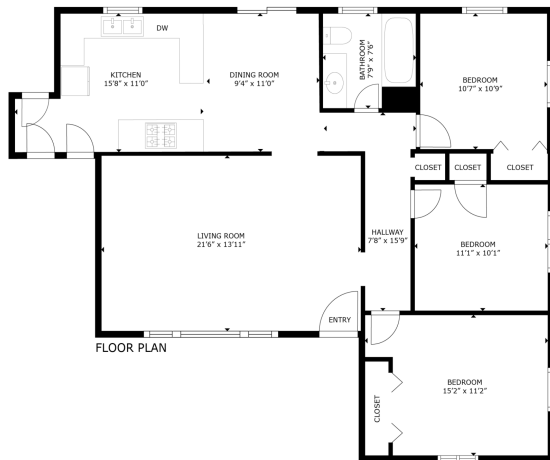
\$215,000
MLS 7058082 Residential
924 King Avenue
Wadena MN 56482



website: www.AffinityRealEstate.com | email: info@affinityrealestate.com | office: 218-237-3333 | fax:218-237-3377



\$215,000
MLS 7058082 Residential
924 King Avenue
Wadena MN 56482



GROSS INTERNAL AREA
FLOOR PLAN 3,128.86 sq. ft.
SIZES AND DIMENSIONS ARE APPROXIMATE, ACTUAL MAY VARY.



website: www.AffinityRealEstate.com | email: info@affinityrealestate.com | office: 218-237-3333 | fax: 218-237-3377



\$215,000
MLS 7058082 Residential
924 King Avenue
Wadena MN 56482