



MLS 7058140 Lake Land

\$325,000

Description:

Discover a rare opportunity to own nearly 7 acres of private lakefront land on highly sought-after Pickerel Lake in Otter Tail County. Known for its remarkable water clarity—often exceeding 30 feet—Pickerel Lake is one of the area’s premier destinations for fishing, boating, swimming, and year-round recreation. With over 160 feet of beautiful shoreline, this property offers a scenic mix of mature hardwood trees and natural wetlands, creating a peaceful setting with privacy and abundant wildlife. Whether you envision building a custom lake home, creating a weekend getaway, or holding as an investment property, this parcel offers endless potential. Conveniently located just 20 miles from Fergus Falls and only 12 miles from Underwood, you’ll enjoy the perfect balance of seclusion and accessibility in the heart of lakes country. Potential building opportunities may exist near the path intersections on the higher section close to County Road 115. If you’ve been waiting for the ideal piece of lakefront paradise, this is your chance. \$50,000 price drop from last Fall. Schedule your showing today!

Additional Details:

Year Built	1950
Lot Acres	6.84
Lot Dimensions	6.84 acres
School District	542
Taxes	\$782
Taxes with Assessments	\$782
Tax Year	2026

Additional Features:

Driving Directions:

Go North on County Highway 35 from the intersection of County Highway 1 and 35. Turn east onto County Road 74 and then turn north onto County Road 115. Turn east onto Shady Nook Drive and go to the end of the cul-de-sac. There is a trail next to 31658 that leads to the shoreline.



Listed By:
Trilogy Real Estate

Affinity Real Estate Inc. participates in the Regional Multiple Listing Service of Minnesota, Inc Broker Reciprocity (sm) program, allowing us to display other broker’s listings on our website. All properties are subject to prior sale, change or withdrawal.



Call Affinity Real Estate

218-237-3333

info@affinityrealestate.com



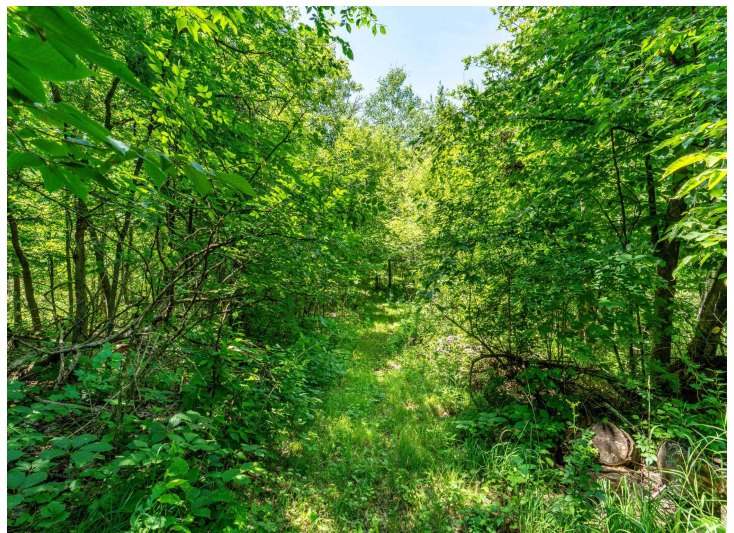
Affinity Real Estate - 600 Park Avenue South - Park Rapids MN 56470



website: www.AffinityRealEstate.com | email: info@affinityrealestate.com | office: 218-237-3333 | fax:218-237-3377



\$325,000
MLS 7058140 Lake Land
TBD Shady Nook Drive
Underwood MN 56586



website: www.AffinityRealEstate.com | email: info@affinityrealestate.com | office: 218-237-3333 | fax:218-237-3377



\$325,000
MLS 7058140 Lake Land
TBD Shady Nook Drive
Underwood MN 56586



website: www.AffinityRealEstate.com | email: info@affinityrealestate.com | office: 218-237-3333 | fax:218-237-3377



\$325,000
MLS 7058140 Lake Land
TBD Shady Nook Drive
Underwood MN 56586



website: www.AffinityRealEstate.com | email: info@affinityrealestate.com | office: 218-237-3333 | fax:218-237-3377



\$325,000
MLS 7058140 Lake Land
TBD Shady Nook Drive
Underwood MN 56586



website: www.AffinityRealEstate.com | email: info@affinityrealestate.com | office: 218-237-3333 | fax:218-237-3377

Affinity
REAL ESTATE INC

\$325,000
MLS 7058140 Lake Land
TBD Shady Nook Drive
Underwood MN 56586



website: www.AffinityRealEstate.com | email: info@affinityrealestate.com | office: 218-237-3333 | fax:218-237-3377



\$325,000
MLS 7058140 Lake Land
TBD Shady Nook Drive
Underwood MN 56586