



MLS 7058156 Residential

**\$79,900**

1,766 sq ft  
4 bedrooms  
3 baths

17159 State Highway 108  
Pelican Rapids MN 56572

Status: Active

**Description:**

Rural property offering 4 bedrooms and 3 bathrooms with approximately 1,700 finished square feet situated on 9+ acres. Features include a detached 2-car garage and multiple outbuildings including barn(s), storage sheds, and additional utility structures. Property offers a combination of open and wooded areas with direct access from a state highway location. Provides a flexible layout with main-level living space and additional bedrooms..

**Additional Details:**

Year Built	1950
Lot Acres	9.06
Lot Dimensions	716x406x165x147x75x117x50x214x590
Garage Stalls	2
School District	548
Taxes	\$1,872
Taxes with Assessments	\$1,872
Tax Year	2025

**Additional Features:**

**Basement:** Unfinished **Fuel:** Array **Garage:** 2 **Heat:** Forced Air **Sewer:** Tank with Drainage Field **Water:** Well **Air Conditioning:** None

**Driving Directions:**

At intersection N Broadway & 1st Ave NW in Pelican Rapids, head West for 2.4 miles and property will be on your right.



Listed By:  
Gallery of Homes

Affinity Real Estate Inc. participates in the Regional Multiple Listing Service of Minnesota, Inc Broker Reciprocity (sm) program, allowing us to display other broker's listings on our website. All properties are subject to prior sale, change or withdrawal.



Call Affinity Real Estate

**218-237-3333**

[info@affinityrealestate.com](mailto:info@affinityrealestate.com)



Affinity Real Estate - 600 Park Avenue South - Park Rapids MN 56470



website: [www.AffinityRealEstate.com](http://www.AffinityRealEstate.com) | email: [info@affinityrealestate.com](mailto:info@affinityrealestate.com) | office: 218-237-3333 | fax:218-237-3377



**\$79,900**  
MLS 7058156 Residential  
17159 State Highway 108  
Pelican Rapids MN 56572



website: [www.AffinityRealEstate.com](http://www.AffinityRealEstate.com) | email: [info@affinityrealestate.com](mailto:info@affinityrealestate.com) | office: 218-237-3333 | fax: 218-237-3377

**Affinity**  
REAL ESTATE INC

**\$79,900**  
MLS 7058156 Residential  
17159 State Highway 108  
Pelican Rapids MN 56572



website: [www.AffinityRealEstate.com](http://www.AffinityRealEstate.com) | email: [info@affinityrealestate.com](mailto:info@affinityrealestate.com) | office: 218-237-3333 | fax:218-237-3377



**\$79,900**  
MLS 7058156 Residential  
17159 State Highway 108  
Pelican Rapids MN 56572



website: [www.AffinityRealEstate.com](http://www.AffinityRealEstate.com) | email: [info@affinityrealestate.com](mailto:info@affinityrealestate.com) | office: 218-237-3333 | fax:218-237-3377

**Affinity**  
REAL ESTATE INC

**\$79,900**  
MLS 7058156 Residential  
17159 State Highway 108  
Pelican Rapids MN 56572



website: [www.AffinityRealEstate.com](http://www.AffinityRealEstate.com) | email: [info@affinityrealestate.com](mailto:info@affinityrealestate.com) | office: 218-237-3333 | fax:218-237-3377



**\$79,900**  
MLS 7058156 Residential  
17159 State Highway 108  
Pelican Rapids MN 56572



website: [www.AffinityRealEstate.com](http://www.AffinityRealEstate.com) | email: [info@affinityrealestate.com](mailto:info@affinityrealestate.com) | office: 218-237-3333 | fax:218-237-3377



**\$79,900**  
MLS 7058156 Residential  
17159 State Highway 108  
Pelican Rapids MN 56572



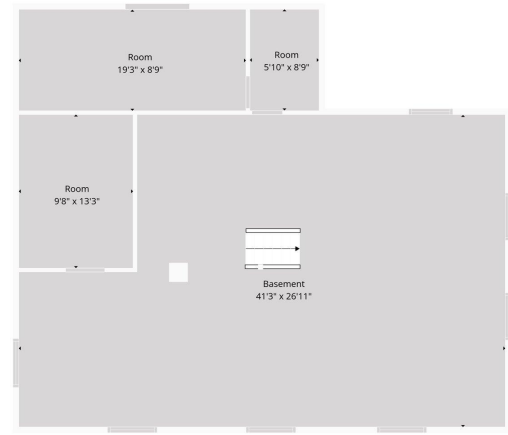
website: [www.AffinityRealEstate.com](http://www.AffinityRealEstate.com) | email: [info@affinityrealestate.com](mailto:info@affinityrealestate.com) | office: 218-237-3333 | fax: 218-237-3377

**Affinity**  
REAL ESTATE INC

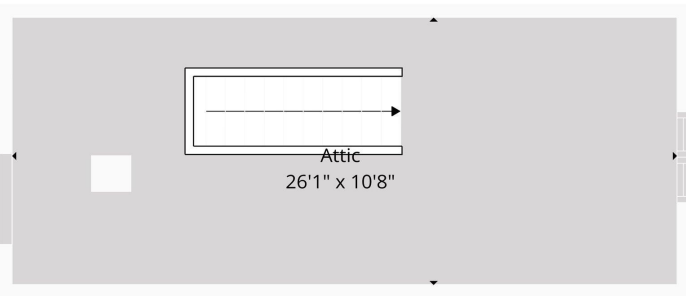
**\$79,900**  
MLS 7058156 Residential  
17159 State Highway 108  
Pelican Rapids MN 56572



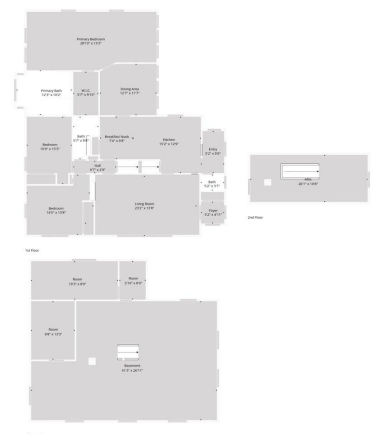
**TOTAL: 2756 sq. ft.**  
 Basement: 990 sq. ft., 1st floor: 1766 sq. ft., 2nd floor: 0 sq. ft.  
 EXCLUDED AREAS: ROOM: 355 sq. ft., FULL BATH: 46 sq. ft., UNDEFINED: 34 sq. ft.  
 LOW CEILING: 194 sq. ft., ATTIC: 85 sq. ft., WALLS: 211 sq. ft.



**TOTAL: 2756 sq. ft.**  
 Basement: 990 sq. ft., 1st floor: 1766 sq. ft., 2nd floor: 0 sq. ft.  
 EXCLUDED AREAS: ROOM: 355 sq. ft., FULL BATH: 46 sq. ft., UNDEFINED: 34 sq. ft.  
 LOW CEILING: 194 sq. ft., ATTIC: 85 sq. ft., WALLS: 211 sq. ft.



**TOTAL: 2756 sq. ft.**  
 Basement: 990 sq. ft., 1st floor: 1766 sq. ft., 2nd floor: 0 sq. ft.  
 EXCLUDED AREAS: ROOM: 355 sq. ft., FULL BATH: 46 sq. ft., UNDEFINED: 34 sq. ft.  
 LOW CEILING: 194 sq. ft., ATTIC: 85 sq. ft., WALLS: 211 sq. ft.

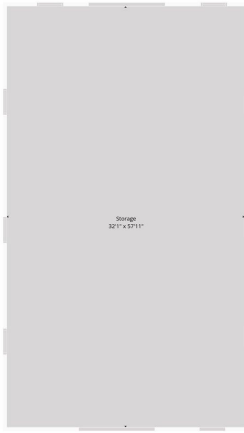


**TOTAL: 2756 sq. ft.**  
 Basement: 990 sq. ft., 1st floor: 1766 sq. ft., 2nd floor: 0 sq. ft.  
 EXCLUDED AREAS: ROOM: 355 sq. ft., FULL BATH: 46 sq. ft., UNDEFINED: 34 sq. ft.  
 LOW CEILING: 194 sq. ft., ATTIC: 85 sq. ft., WALLS: 211 sq. ft.

website: [www.AffinityRealEstate.com](http://www.AffinityRealEstate.com) | email: [info@affinityrealestate.com](mailto:info@affinityrealestate.com) | office: 218-237-3333 | fax: 218-237-3377



**\$79,900**  
 MLS 7058156 Residential  
 17159 State Highway 108  
 Pelican Rapids MN 56572



TOTAL: 0 sq. ft.  
1st Floor: 0 sq. ft.  
EXCLUDED AREAS: STORAGE: 1866 sq. ft, WALLS: 91 sq. ft.  
Floor Plan Created By: Calculated by Measurements Provided by Seller and Not Guaranteed

website: [www.AffinityRealEstate.com](http://www.AffinityRealEstate.com) | email: [info@affinityrealestate.com](mailto:info@affinityrealestate.com) | office: 218-237-3333 | fax:218-237-3377



**\$79,900**  
MLS 7058156 Residential  
17159 State Highway 108  
Pelican Rapids MN 56572