



MLS 7058307 Land

\$44,900

1 Acres
Raw Land

ABC East River Drive
Park Rapids MN 56470

Status: Active

Description:

Gorgeous in-town building site with a prime location on East River Drive. This rare R-3 zoned property is ideal for those looking to build a single family home or for the investor who may want to build up to 3 units. It features a full acre with beautiful tree cover, several building site options, privacy and blacktop access. City water and sewer connections are scheduled for installation. The seller is paying the full amount to bring these services to the property. Access to the Heartland Trail is just a stone's throw away. This is an exceptional lot that will not disappoint.

Additional Details:

Lot Acres	1
Lot Dimensions	132 x 328
School District	1384
Taxes	\$358
Taxes with Assessments	\$358
Tax Year	2026

Additional Features:

Driving Directions:

From Hwy 34/Central Ave: Go North to a left on East River Dr. Proceed to lot on right.



Listed By:
Affinity Real Estate Inc.

Affinity Real Estate Inc. participates in the Regional Multiple Listing Service of Minnesota, Inc Broker Reciprocity (sm) program, allowing us to display other broker's listings on our website. All properties are subject to prior sale, change or withdrawal.



Call Affinity Real Estate

218-237-3333

info@affinityrealestate.com



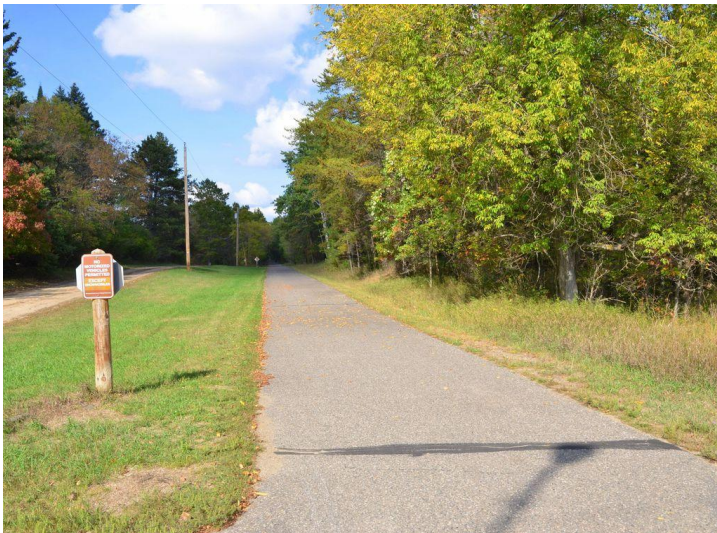
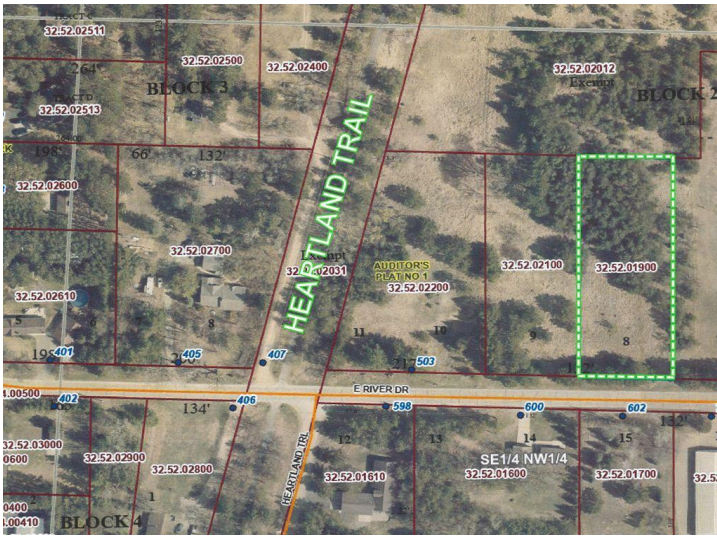
Affinity Real Estate - 600 Park Avenue South - Park Rapids MN 56470



website: www.AffinityRealEstate.com | email: info@affinityrealestate.com | office: 218-237-3333 | fax:218-237-3377



\$44,900
MLS 7058307 Land
ABC East River Drive
Park Rapids MN 56470



website: www.AffinityRealEstate.com | email: info@affinityrealestate.com | office: 218-237-3333 | fax: 218-237-3377



\$44,900
 MLS 7058307 Land
 ABC East River Drive
 Park Rapids MN 56470