



MLS 7058491 Residential

**\$1,625,000**

4,754 sq ft  
4 bedrooms  
5 baths

38949 Union Drive  
Erskine MN 56535

Status: Active

**Description:**

One of the best views on beautiful Union Lake! This one-of-a-kind custom home truly has it all, featuring gorgeous high-end finishes throughout. With 6 bedrooms and 5 bathrooms, this home offers incredible spaces including in-home theater with cinema style seating, flex room, and a large family/game area.

The walk-out basement showcases a stunning tiled koi mural floor leading into a beautifully designed bathroom. Enjoy a convenient kitchen/bar area in the walk out basement--perfect for movie nights, game days, and easy access to refreshments while entertaining indoors and out.

Outdoor living space is unmatched with patio/ decks on every level--from the main floor paver patio with an outdoor kitchen and entertaining area, all the way up to the private crow's nest for breathtaking panoramic lake views. This unique property has so much to offer, including ample storage inside and out, plus a 640 sq ft container for additional space.

**Additional Details:**

Year Built	2017
Lot Acres	1.548
Lot Dimensions	239.03x214.95x24.13x88.66x204.32x338.08
Garage Stalls	3
School District	1196
Taxes	\$6,929
Taxes with Assessments	\$7,530
Tax Year	2025

**Additional Features:**

Fuel: Array Heat: Forced Air

**Driving Directions:**

From Erskine, turn onto Vance Ave S, turn Right at 3rd St S to stay on Vance Ave S, turn Left on 2nd Ave S (turns into Cty Hwy 34), follow curve to stay on Cty 34 then stay straight onto Cty Hwy 36 for 8 miles then right & a quick Left to stay on 36. Turn Right on E



Listed By:  
Oxford Realty, LLC

Affinity Real Estate Inc. participates in the Regional Multiple Listing Service of Minnesota, Inc Broker Reciprocity (sm) program, allowing us to display other broker's listings on our website. All properties are subject to prior sale, change or withdrawal.



Call Affinity Real Estate

**218-237-3333**

[info@affinityrealestate.com](mailto:info@affinityrealestate.com)



Affinity Real Estate - 600 Park Avenue South - Park Rapids MN 56470



website: [www.AffinityRealEstate.com](http://www.AffinityRealEstate.com) | email: [info@affinityrealestate.com](mailto:info@affinityrealestate.com) | office: 218-237-3333 | fax:218-237-3377



**\$1,625,000**  
MLS 7058491 Residential  
38949 Union Drive  
Erskine MN 56535



website: [www.AffinityRealEstate.com](http://www.AffinityRealEstate.com) | email: [info@affinityrealestate.com](mailto:info@affinityrealestate.com) | office: 218-237-3333 | fax: 218-237-3377



**\$1,625,000**  
MLS 7058491 Residential  
38949 Union Drive  
Erskine MN 56535



website: [www.AffinityRealEstate.com](http://www.AffinityRealEstate.com) | email: [info@affinityrealestate.com](mailto:info@affinityrealestate.com) | office: 218-237-3333 | fax: 218-237-3377

**Affinity**  
REAL ESTATE INC

**\$1,625,000**  
MLS 7058491 Residential  
38949 Union Drive  
Erskine MN 56535



website: [www.AffinityRealEstate.com](http://www.AffinityRealEstate.com) | email: [info@affinityrealestate.com](mailto:info@affinityrealestate.com) | office: 218-237-3333 | fax:218-237-3377

**Affinity**  
REAL ESTATE INC

**\$1,625,000**  
MLS 7058491 Residential  
38949 Union Drive  
Erskine MN 56535



website: [www.AffinityRealEstate.com](http://www.AffinityRealEstate.com) | email: [info@affinityrealestate.com](mailto:info@affinityrealestate.com) | office: 218-237-3333 | fax:218-237-3377

**Affinity**  
REAL ESTATE INC

**\$1,625,000**  
MLS 7058491 Residential  
38949 Union Drive  
Erskine MN 56535



website: [www.AffinityRealEstate.com](http://www.AffinityRealEstate.com) | email: [info@affinityrealestate.com](mailto:info@affinityrealestate.com) | office: 218-237-3333 | fax:218-237-3377



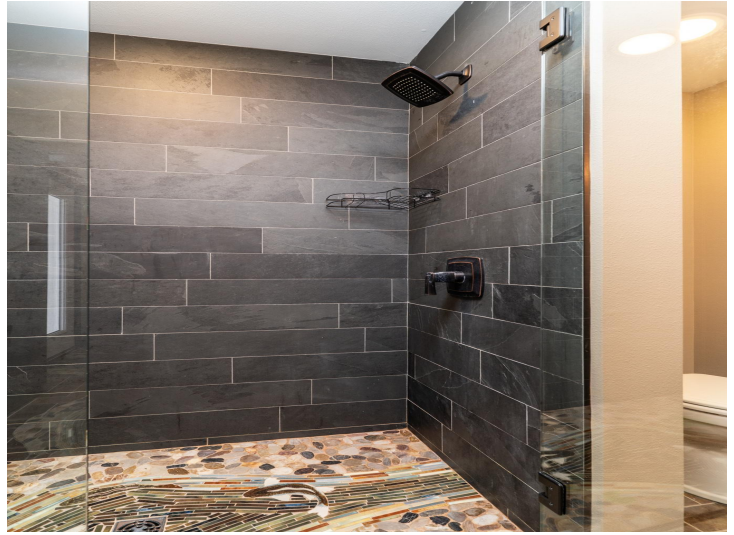
**\$1,625,000**  
MLS 7058491 Residential  
38949 Union Drive  
Erskine MN 56535



website: [www.AffinityRealEstate.com](http://www.AffinityRealEstate.com) | email: [info@affinityrealestate.com](mailto:info@affinityrealestate.com) | office: 218-237-3333 | fax:218-237-3377



**\$1,625,000**  
MLS 7058491 Residential  
38949 Union Drive  
Erskine MN 56535



website: [www.AffinityRealEstate.com](http://www.AffinityRealEstate.com) | email: [info@affinityrealestate.com](mailto:info@affinityrealestate.com) | office: 218-237-3333 | fax: 218-237-3377

**Affinity**  
REAL ESTATE INC

**\$1,625,000**  
MLS 7058491 Residential  
38949 Union Drive  
Erskine MN 56535



website: [www.AffinityRealEstate.com](http://www.AffinityRealEstate.com) | email: [info@affinityrealestate.com](mailto:info@affinityrealestate.com) | office: 218-237-3333 | fax:218-237-3377



**\$1,625,000**  
MLS 7058491 Residential  
38949 Union Drive  
Erskine MN 56535



website: [www.AffinityRealEstate.com](http://www.AffinityRealEstate.com) | email: [info@affinityrealestate.com](mailto:info@affinityrealestate.com) | office: 218-237-3333 | fax: 218-237-3377

**Affinity**  
REAL ESTATE INC

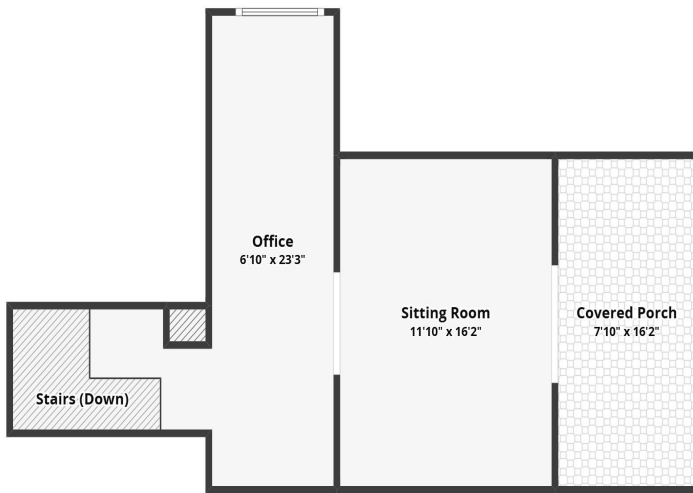
**\$1,625,000**  
MLS 7058491 Residential  
38949 Union Drive  
Erskine MN 56535



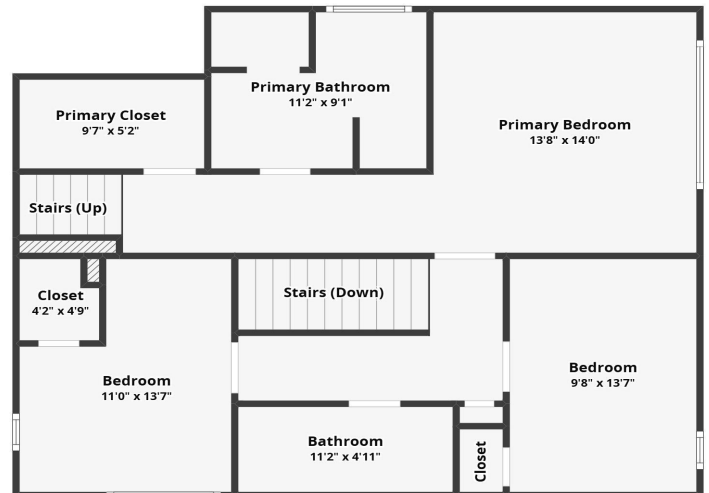
website: [www.AffinityRealEstate.com](http://www.AffinityRealEstate.com) | email: [info@affinityrealestate.com](mailto:info@affinityrealestate.com) | office: 218-237-3333 | fax:218-237-3377

**Affinity**  
REAL ESTATE INC

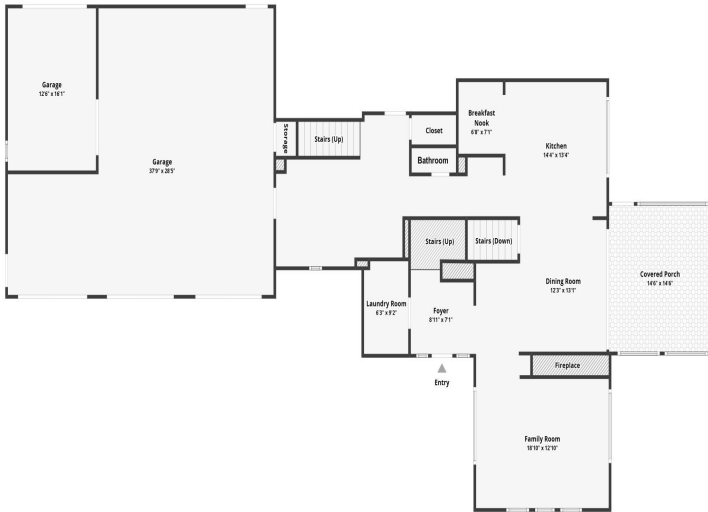
**\$1,625,000**  
MLS 7058491 Residential  
38949 Union Drive  
Erskine MN 56535



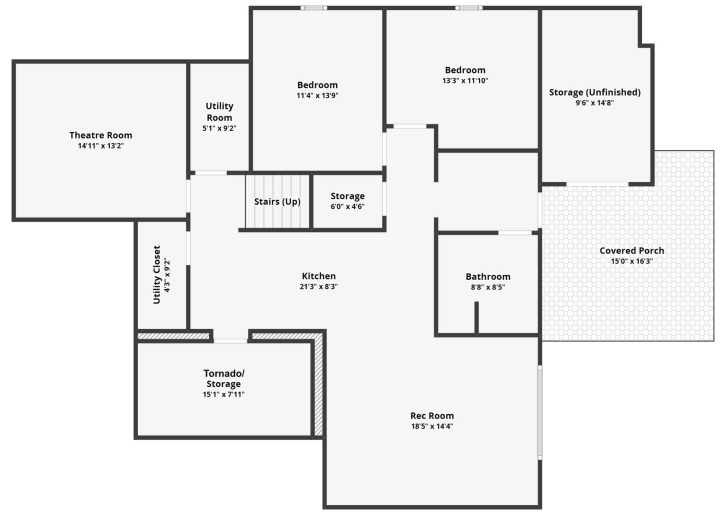
All dimensions are approximate and subject to independent verification



All dimensions are approximate and subject to independent verification



All dimensions are approximate and subject to independent verification

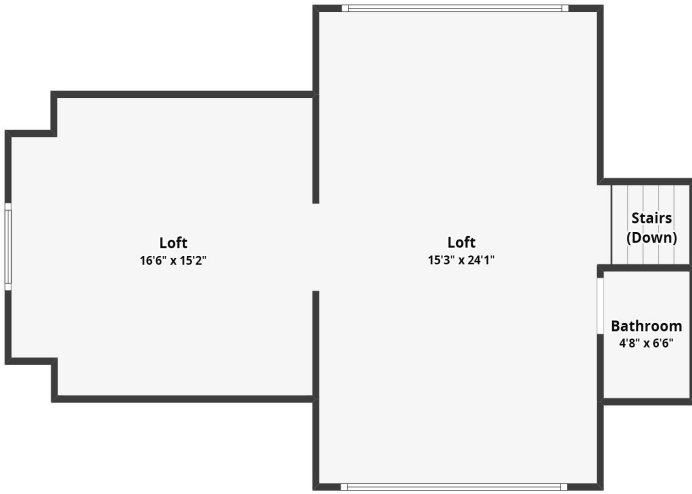


All dimensions are approximate and subject to independent verification

website: [www.AffinityRealEstate.com](http://www.AffinityRealEstate.com) | email: [info@affinityrealestate.com](mailto:info@affinityrealestate.com) | office: 218-237-3333 | fax: 218-237-3377



**\$1,625,000**  
 MLS 7058491 Residential  
 38949 Union Drive  
 Erskine MN 56535



All dimensions are approximate and subject to independent verification

website: [www.AffinityRealEstate.com](http://www.AffinityRealEstate.com) | email: [info@affinityrealestate.com](mailto:info@affinityrealestate.com) | office: 218-237-3333 | fax:218-237-3377



**\$1,625,000**

MLS 7058491 Residential  
38949 Union Drive  
Erskine MN 56535