



MLS 7058650 Residential

\$299,900

1,536 sq ft
4 bedrooms
2 baths

1312 Moorstone Drive
Alexandria MN 56308

Status: Active

Description:

Located close to golf courses and lakes, this great home is turnkey and ready for you to move into and enjoy! This home features a large lot with a beautiful back yard, large patio and a firepit to enjoy the summer days. The home is up to date and features 4 bedrooms, 2 full baths, family room and a heated, insulated, oversized garage with great storage. This home reflects the sellers care and pride of ownership.

Additional Details:

Year Built	1983
Lot Acres	0.65
Lot Dimensions	90x224x165x223
Garage Stalls	2
School District	206
Taxes	\$2,095
Taxes with Assessments	\$2,234
Tax Year	2026

Additional Features:

Basement: Finished, Full **Fuel:** Natural Gas **Garage:** 2 **Heat:** Forced Air **Sewer:** City Sewer/Connected **Water:** Private **Air Conditioning:** Central Air

Driving Directions:

Hwy 29N to right on CR 73. Take right on Lake Geneva Road to left on Markland Passage. Take right on Moorstone Drive to sign on right.



Listed By:
Counselor Realty Inc of Alex

Affinity Real Estate Inc. participates in the Regional Multiple Listing Service of Minnesota, Inc Broker Reciprocity (sm) program, allowing us to display other broker's listings on our website. All properties are subject to prior sale, change or withdrawal.



Call Affinity Real Estate

218-237-3333

info@affinityrealestate.com



Affinity Real Estate - 600 Park Avenue South - Park Rapids MN 56470



website: www.AffinityRealEstate.com | email: info@affinityrealestate.com | office: 218-237-3333 | fax:218-237-3377

Affinity
REAL ESTATE INC

\$299,900
MLS 7058650 Residential
1312 Moorstone Drive
Alexandria MN 56308



website: www.AffinityRealEstate.com | email: info@affinityrealestate.com | office: 218-237-3333 | fax:218-237-3377



\$299,900
MLS 7058650 Residential
1312 Moorstone Drive
Alexandria MN 56308



website: www.AffinityRealEstate.com | email: info@affinityrealestate.com | office: 218-237-3333 | fax: 218-237-3377

Affinity
REAL ESTATE INC

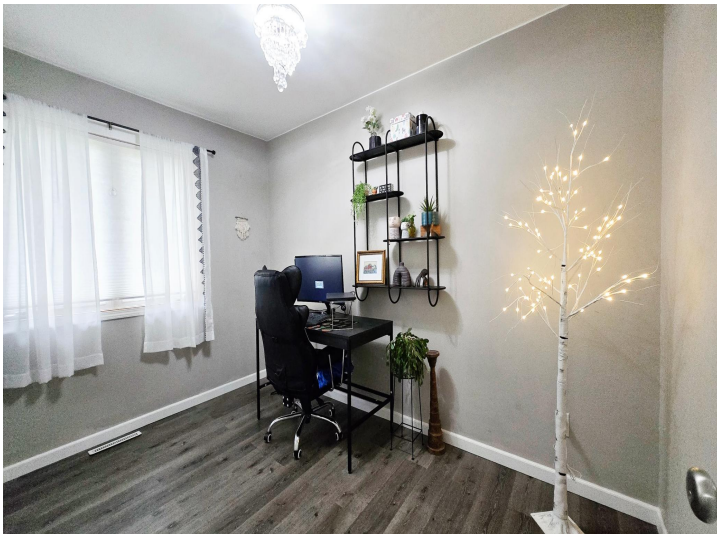
\$299,900
MLS 7058650 Residential
1312 Moorstone Drive
Alexandria MN 56308



website: www.AffinityRealEstate.com | email: info@affinityrealestate.com | office: 218-237-3333 | fax: 218-237-3377

Affinity
REAL ESTATE INC

\$299,900
MLS 7058650 Residential
1312 Moorstone Drive
Alexandria MN 56308



website: www.AffinityRealEstate.com | email: info@affinityrealestate.com | office: 218-237-3333 | fax: 218-237-3377

Affinity
REAL ESTATE INC

\$299,900
MLS 7058650 Residential
1312 Moorstone Drive
Alexandria MN 56308



website: www.AffinityRealEstate.com | email: info@affinityrealestate.com | office: 218-237-3333 | fax:218-237-3377



\$299,900
MLS 7058650 Residential
1312 Moorstone Drive
Alexandria MN 56308



website: www.AffinityRealEstate.com | email: info@affinityrealestate.com | office: 218-237-3333 | fax:218-237-3377



\$299,900
MLS 7058650 Residential
1312 Moorstone Drive
Alexandria MN 56308