



MLS 7058752 Land

\$17,500

7140 Square Feet
Raw Land

513 Concord Street
Fergus Falls MN 56537

Status: Active

Description:

70' x 102' level city lot with driveway and shed already in place. Great opportunity for a new home or investment property. Flat terrain makes for easy building and site prep. Convenient in-town location with utilities nearby, ready for your new build.

Additional Details:

Lot Acres	7140
Lot Dimensions	50x102x20x102
School District	544
Taxes	(unreported)
Taxes with Assessments	(unreported)
Tax Year	2026

Additional Features:

Driving Directions:

From Lincoln Ave & Union Ave in Fergus Falls, go south on S Union Ave 0.4 mi
Turn left onto E Vernon Ave
Go 0.8 mi and turn left onto S Concord St.



Listed By:
Keller Williams Realty Professionals

Affinity Real Estate Inc. participates in the Regional Multiple Listing Service of Minnesota, Inc Broker Reciprocity (sm) program, allowing us to display other broker's listings on our website. All properties are subject to prior sale, change or withdrawal.



Call Affinity Real Estate

218-237-3333

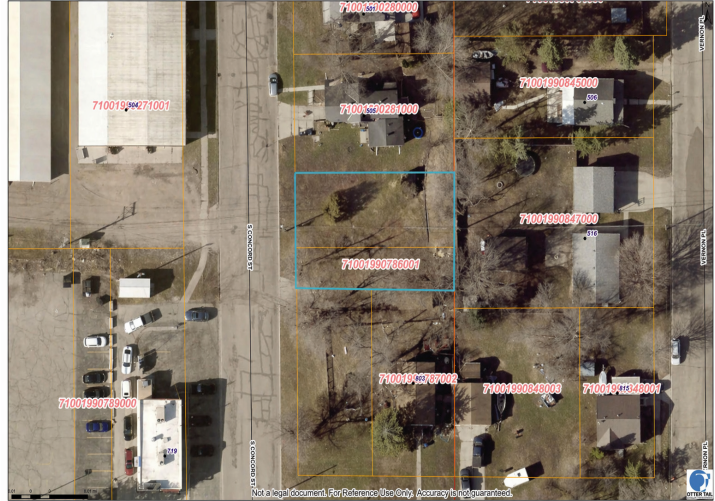
info@affinityrealestate.com



Affinity Real Estate - 600 Park Avenue South - Park Rapids MN 56470



513 S CONCORD ST, FERGUS FALLS Created: 4/21/2026 10:46 AM <https://ottertailcounty.gov>



website: www.AffinityRealEstate.com | email: info@affinityrealestate.com | office: 218-237-3333 | fax:218-237-3377



\$17,500
MLS 7058752 Land
513 Concord Street
Fergus Falls MN 56537