



MLS 7058763 Residential

\$698,900

3,230 sq ft
4 bedrooms
3 baths

1729 Quail Lane
Longville MN 56655

Status: Active

Description:

Sitting on the edge of sparkling Kego Lake sits this stunning log home and all that this fine home has to offer! Great views of Kego Lake with a gentle elevation taking you to the lake with the over sized custom Granite steps, large well kept yard with boulder retaining walls, 2 docks, oversized wrap around deck as well as a log storage shed! From there we enter the garage with finished floors and walls as well as an electric car charging station all that you could want in this oversized garage. Once inside the home you will be greeted with soaring inverted wooden vaults on the ceilings, tons of windows and natural daylight viewing the lake, a gorgeous kitchen and top quality finishes. Hickory flooring, wood steps to the finished basement and a walk out through the 4 season porch to the lake! Plan on taking some time to truly take in all of this incredible home has to offer. Welcome home!

Additional Details:


Year Built	2004
Lot Acres	1.1
Lot Dimensions	152x460x336x196
Garage Stalls	2
School District	734
Taxes	\$2,590
Taxes with Assessments	\$2,676
Tax Year	2026

Additional Features:

Basement: Daylight/Lookout Windows, Egress Window(s), Finished, Full, Concrete, Walkout **Fuel:** Array **Garage:** 2 **Heat:** Boiler, Forced Air **Sewer:** Private Sewer **Water:** 4-Inch Submersible **Air Conditioning:** Central Air

Driving Directions:

From Longville, North on Hwy 84 County Road 120 to Quail Lane to property on the right.

 Listed By:
RE/MAX Results - Longville

Affinity Real Estate Inc. participates in the Regional Multiple Listing Service of Minnesota, Inc Broker Reciprocity (sm) program, allowing us to display other broker's listings on our website. All properties are subject to prior sale, change or withdrawal.

 **Call Affinity Real Estate**
218-237-3333
info@affinityrealestate.com

  
Affinity Real Estate - 600 Park Avenue South - Park Rapids MN 56470



website: www.AffinityRealEstate.com | email: info@affinityrealestate.com | office: 218-237-3333 | fax:218-237-3377



\$698,900
MLS 7058763 Residential
1729 Quail Lane
Longville MN 56655



website: www.AffinityRealEstate.com | email: info@affinityrealestate.com | office: 218-237-3333 | fax:218-237-3377

Affinity
REAL ESTATE INC

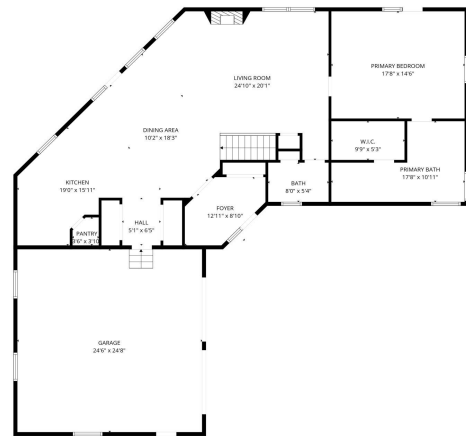
\$698,900
MLS 7058763 Residential
1729 Quail Lane
Longville MN 56655



website: www.AffinityRealEstate.com | email: info@affinityrealestate.com | office: 218-237-3333 | fax:218-237-3377

Affinity
REAL ESTATE INC

\$698,900
MLS 7058763 Residential
1729 Quail Lane
Longville MN 56655

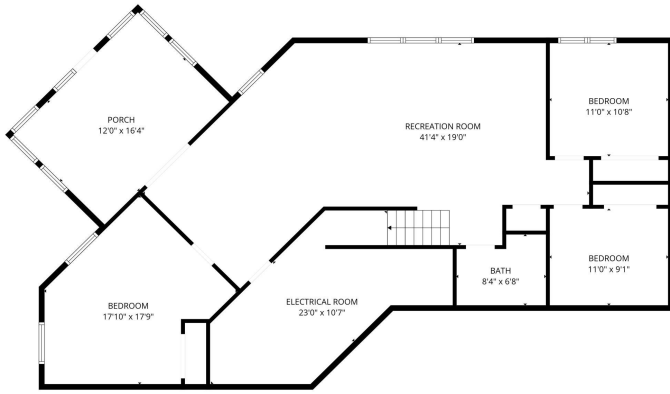


Total GLA: 1537 sq. ft | Total: 3824 sq. ft
 Basement: 1207 sq. ft. (Excluded areas 438 sq. ft)
 1st floor: 1537 sq. ft. (Excluded areas 642 sq. ft)

website: www.AffinityRealEstate.com | email: info@affinityrealestate.com | office: 218-237-3333 | fax: 218-237-3377



\$698,900
 MLS 7058763 Residential
 1729 Quail Lane
 Longville MN 56655



Total GLA: 1537 sq. ft. | Total: 3824 sq. ft.
Basement: 1207 sq. ft. (Excluded areas 438 sq. ft.)
1st floor: 1537 sq. ft. (Excluded areas 642 sq. ft.)

website: www.AffinityRealEstate.com | email: info@affinityrealestate.com | office: 218-237-3333 | fax: 218-237-3377



\$698,900
MLS 7058763 Residential
1729 Quail Lane
Longville MN 56655