



MLS 7058764 Land

\$1

218 Acres
Raw Land

TBD 400th St
New York Mills MN 56567

Status: Active

Description:

Perham/New York Mills, MN land auction! Offered in 5 parcels, this 218± acre offering located between Perham and New York Mills, MN features a mix of tillable farmland, hunting/recreational land, and building sites. Lot 1 (Parcel A) consists of 36.93± acres along U.S. Hwy 10. Lot 2 (Parcel B) offers 40.99± acres of primarily tillable and hunting land situated between U.S. Hwy 10 and 400th St. Lot 3 (Parcel D) is 43± acres along W Diamond Rd (400th St), suited for hunting, building, and farming. Lot 4 (Parcel E) is the largest at 83.57± acres of primarily tillable, hunting, and building land located along W Diamond Rd and 505th Ave. Lot 5 (Parcel F) rounds out the offering with 14.03± acres featuring an established homestead/building site at the corner of 505th Ave and W Diamond Rd. This is an online-only auction — bidding opens Friday, May 8th and begins closing Tuesday, May 12th at 12pm. Visit our auction site to register and place bids. Parcels are located in 2 different locations.

Additional Details:

Lot Acres	218
Lot Dimensions	218 acres
School District	1962
Taxes	\$2,890
Taxes with Assessments	\$2,890
Tax Year	2025

Additional Features:

Driving Directions:

From Perham at the intersection of US Hwy 10 and Hwy 78, head East on Hwy 10 for 5 miles. Parcel A & B are on the right (South) side. Continue on US Hwy 10 for 2.4 miles (7.4 miles total from Perham) and turn right on 505th Ave. Parcels D,E,F are located at the corner of 505th Ave and W Diamond Rd



Listed By:
Counselor Realty Detroit Lakes

Affinity Real Estate Inc. participates in the Regional Multiple Listing Service of Minnesota, Inc Broker Reciprocity (sm) program, allowing us to display other broker's listings on our website. All properties are subject to prior sale, change or withdrawal.



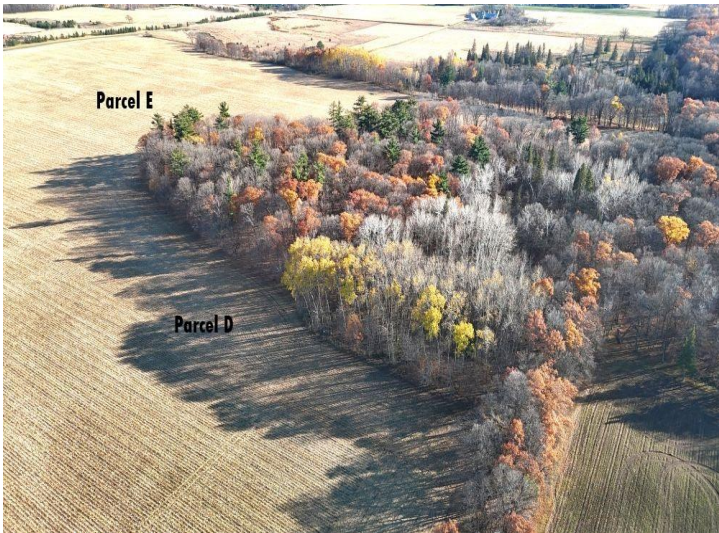
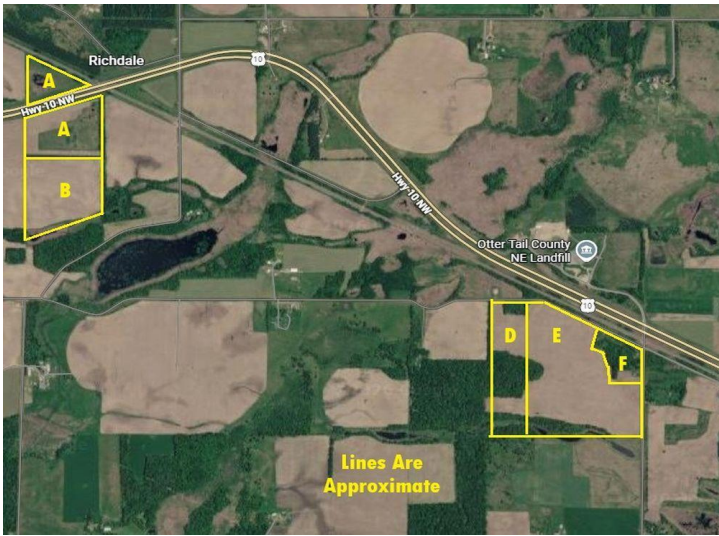
Call Affinity Real Estate

218-237-3333

info@affinityrealestate.com



Affinity Real Estate - 600 Park Avenue South - Park Rapids MN 56470



website: www.AffinityRealEstate.com | email: info@affinityrealestate.com | office: 218-237-3333 | fax:218-237-3377



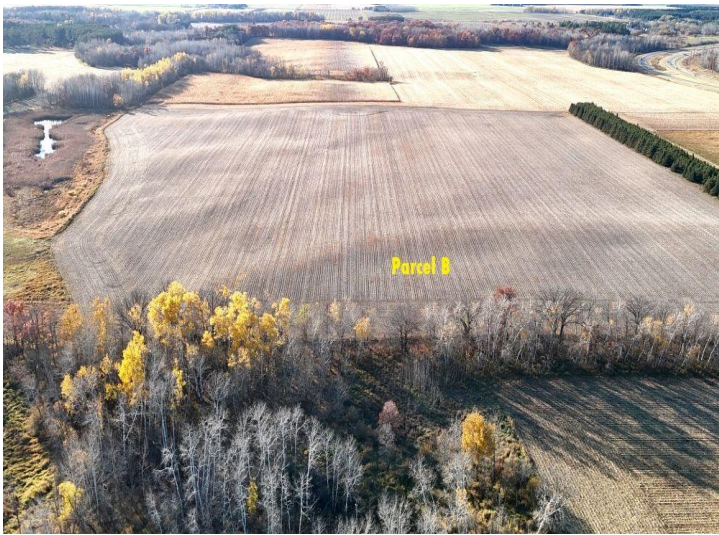
\$1
MLS 7058764 Land
TBD 400th St
New York Mills MN 56567



website: www.AffinityRealEstate.com | email: info@affinityrealestate.com | office: 218-237-3333 | fax:218-237-3377



\$1
MLS 7058764 Land
TBD 400th St
New York Mills MN 56567



website: www.AffinityRealEstate.com | email: info@affinityrealestate.com | office: 218-237-3333 | fax:218-237-3377



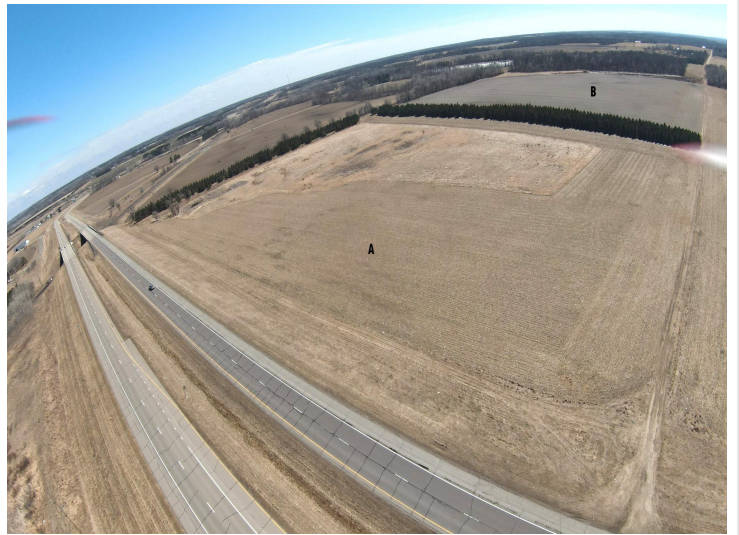
\$1
MLS 7058764 Land
TBD 400th St
New York Mills MN 56567



website: www.AffinityRealEstate.com | email: info@affinityrealestate.com | office: 218-237-3333 | fax:218-237-3377



\$1
MLS 7058764 Land
TBD 400th St
New York Mills MN 56567



website: www.AffinityRealEstate.com | email: info@affinityrealestate.com | office: 218-237-3333 | fax:218-237-3377



\$1
MLS 7058764 Land
TBD 400th St
New York Mills MN 56567



website: www.AffinityRealEstate.com | email: info@affinityrealestate.com | office: 218-237-3333 | fax: 218-237-3377



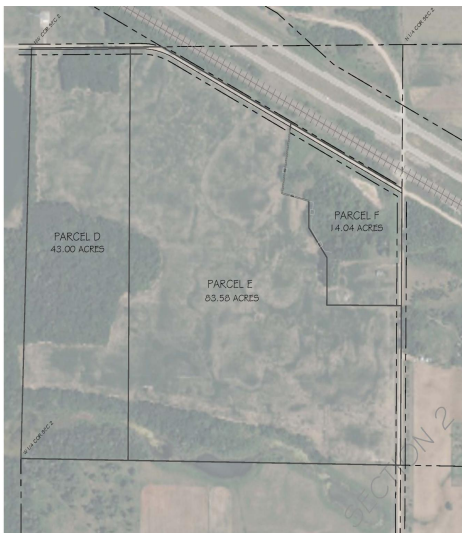
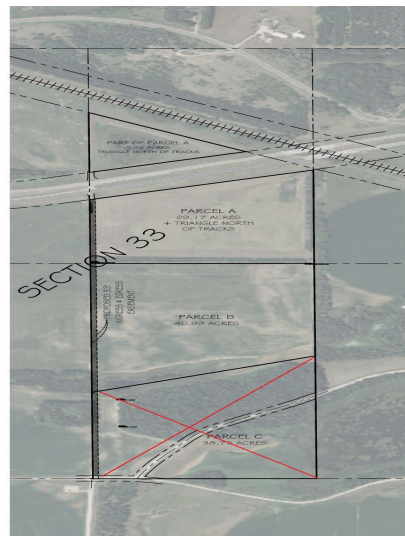
\$1
MLS 7058764 Land
TBD 400th St
New York Mills MN 56567



website: www.AffinityRealEstate.com | email: info@affinityrealestate.com | office: 218-237-3333 | fax:218-237-3377



\$1
MLS 7058764 Land
TBD 400th St
New York Mills MN 56567



website: www.AffinityRealEstate.com | email: info@affinityrealestate.com | office: 218-237-3333 | fax:218-237-3377



\$1
MLS 7058764 Land
TBD 400th St
New York Mills MN 56567