



MLS 7058809 Residential

\$385,000

1,520 sq ft
3 bedrooms
3 baths

1060 Sarajac Road
Longville MN 56655

Status: Active

Description:

The Sarajac sits right on the shores of Girl Lake, near Longville, MN. It is part of the Pine Ridge Resort Girl Lake LLC, a gem for anyone dreaming of owning a lake home or getaway. Own your cabin and a 1/8 share of a peninsula with over 700 feet of natural shoreline, two designated dock spaces, and a natural sandy swim area. An amazing property. The furnished cabin is 1,520 sf and is steps from the water. It includes one main-level bedroom, two main-level full bathrooms, a kitchen, a large living room, a dining area, two large bedrooms on the second floor, another half bath, and a large deck extending over the lake. Pine Ridge Resort offers a chance to own a part of the Northwoods legacy on the Woman Lake Chain, famous for trophy fishing and recreation. Surrounded by the Chippewa National Forest, with over 6,200 acres of water and 45 miles of shoreline. Countless adventures await. Mornings begin with coffee on the deck overlooking the water, and evenings end with campfires and sunsets over the pines. Short boat ride to Longville City Marina for essentials, a bite to eat, or some ice cream. Girl Lake offers a unique blend of relaxation and adventure that's hard to find anywhere else. Come to play and relax. Member-owned association with fees covering taxes, insurance, high-speed WiFi, dock/lift service, and grounds maintenance. Fish-cleaning house and tool shed available. Brand-new dock systems were added this spring, along with a community room with laundry facilities. Enjoy lake life with most maintenance already taken care of. Rules and regulations are available upon request. The loons are calling to you. Feel free to inquire and tour any of the other available cabins at a showing. Centrally Located: •Walker: 26 miles •Brainerd: 54 miles •Detroit Lakes: 88 miles •Duluth: 116 miles •Fargo: 134 miles •Minneapolis: 175 miles

Additional Details:

Year Built	1980
Lot Acres	2.26
Lot Dimensions	2.26 Acres
School District	118
Taxes	\$1,398
Taxes with Assessments	\$1,398
Tax Year	2026

Additional Features:

Fuel: Array **Heat:** Boiler, Forced Air



Listed By:
Savvy Avenue, LLC

Centrally located on Hwy 84, watch for Pine Ridge Resort on the south of Longville, turn west onto Glenmar Dr NE. The cabin is on the west side of the road. The main entrance is on the left side of the property. Unit #1 is situated on the left side of the property. Call for more information. Broker Reciprocity (sm) program, allowing us to display other broker's listings on our website. All properties are subject to prior sale, change or withdrawal.



Call Affinity Real Estate

218-237-3333

info@affinityrealestate.com



Affinity Real Estate - 600 Park Avenue South - Park Rapids MN 56470



website: www.AffinityRealEstate.com | email: info@affinityrealestate.com | office: 218-237-3333 | fax:218-237-3377



\$385,000
MLS 7058809 Residential
1060 Sarajac Road
Longville MN 56655



website: www.AffinityRealEstate.com | email: info@affinityrealestate.com | office: 218-237-3333 | fax:218-237-3377



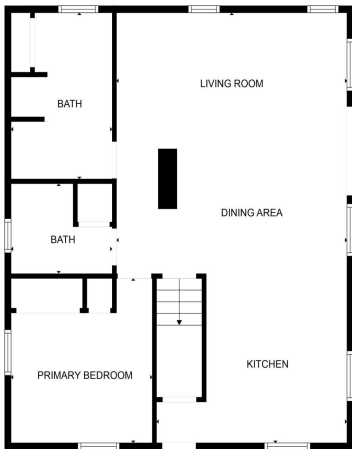
\$385,000
MLS 7058809 Residential
1060 Sarajac Road
Longville MN 56655



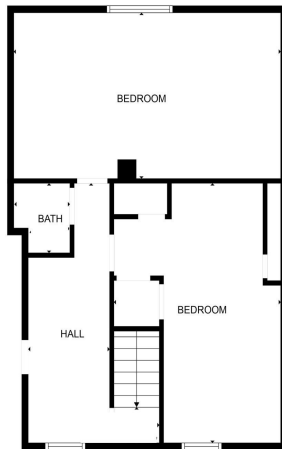
website: www.AffinityRealEstate.com | email: info@affinityrealestate.com | office: 218-237-3333 | fax: 218-237-3377

Affinity
REAL ESTATE INC

\$385,000
MLS 7058809 Residential
1060 Sarajac Road
Longville MN 56655



FLOOR 1



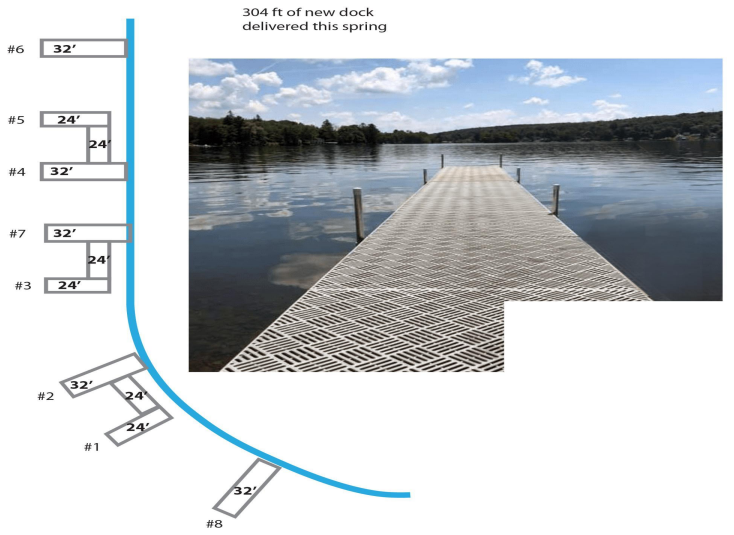
FLOOR 2



website: www.AffinityRealEstate.com | email: info@affinityrealestate.com | office: 218-237-3333 | fax: 218-237-3377

Affinity
REAL ESTATE INC

\$385,000
MLS 7058809 Residential
1060 Sarajac Road
Longville MN 56655



website: www.AffinityRealEstate.com | email: info@affinityrealestate.com | office: 218-237-3333 | fax: 218-237-3377



\$385,000
 MLS 7058809 Residential
 1060 Sarajac Road
 Longville MN 56655



website: www.AffinityRealEstate.com | email: info@affinityrealestate.com | office: 218-237-3333 | fax:218-237-3377



\$385,000
MLS 7058809 Residential
1060 Sarajac Road
Longville MN 56655



website: www.AffinityRealEstate.com | email: info@affinityrealestate.com | office: 218-237-3333 | fax: 218-237-3377

Affinity
REAL ESTATE INC

\$385,000
MLS 7058809 Residential
1060 Sarajac Road
Longville MN 56655



website: www.AffinityRealEstate.com | email: info@affinityrealestate.com | office: 218-237-3333 | fax:218-237-3377



\$385,000
MLS 7058809 Residential
1060 Sarajac Road
Longville MN 56655