



MLS 7058946 Residential

\$699,900

2,136 sq ft
4 bedrooms
3 baths

43522 US 71
Bemidji MN 56461

Status: Active

Description:

Discover your own slice of northern Minnesota paradise with this stunning 4-bedroom, 3-bath country home set on 20 breathtaking acres overlooking Dehart Lake. Perfectly positioned for privacy and outdoor living, this property borders both state and county land—giving you direct access to endless trails, wildlife, and year-round recreation right out your back door.

Step inside to find a warm and inviting interior highlighted by a dramatic two-story fireplace and beautiful hardwood floors. The home features thoughtfully updated bathrooms and spacious living areas designed for both comfort and entertaining. Outside, the amenities truly shine. Relax on the expansive front porch and take in the peaceful surroundings, or enjoy summer days by the pool complete with generous decking. Unwind in the hot tub under the stars after a day of exploring your own private trail system that winds throughout the acreage.

For hobbyists, storage, or business needs, the impressive 1,800 sq ft heated and insulated pole building offers incredible flexibility. Additional outbuildings provide even more space for equipment, toys, or livestock.

Whether you're seeking a serene retreat, a recreational haven, or a full-time residence immersed in nature, this property delivers everything you could want for embracing the northern Minnesota lifestyle.

Additional Details:

Year Built	2002
Lot Acres	20
Lot Dimensions	660x1320
Garage Stalls	8
School District	31
Taxes	\$2,856
Taxes with Assessments	\$2,856
Tax Year	2026

Additional Features:

Basement: Block, Finished **Fuel:** Array **Garage:** 8 **Heat:** Forced Air **Sewer:** Private Sewer **Water:** Well **Air Conditioning:** Central Air

Driving Directions:

From Bemidji, south on Hwy 71 to property on the left.



Listed By:
Real Broker, LLC

Affinity Real Estate Inc. participates in the Regional Multiple Listing Service of Minnesota, Inc Broker Reciprocity (sm) program, allowing us to display other broker's listings on our website. All properties are subject to prior sale, change or withdrawal.



Call Affinity Real Estate

218-237-3333

info@affinityrealestate.com



Affinity Real Estate - 600 Park Avenue South - Park Rapids MN 56470



website: www.AffinityRealEstate.com | email: info@affinityrealestate.com | office: 218-237-3333 | fax:218-237-3377



\$699,900
MLS 7058946 Residential
43522 US 71
Bemidji MN 56461



website: www.AffinityRealEstate.com | email: info@affinityrealestate.com | office: 218-237-3333 | fax: 218-237-3377

Affinity
REAL ESTATE INC

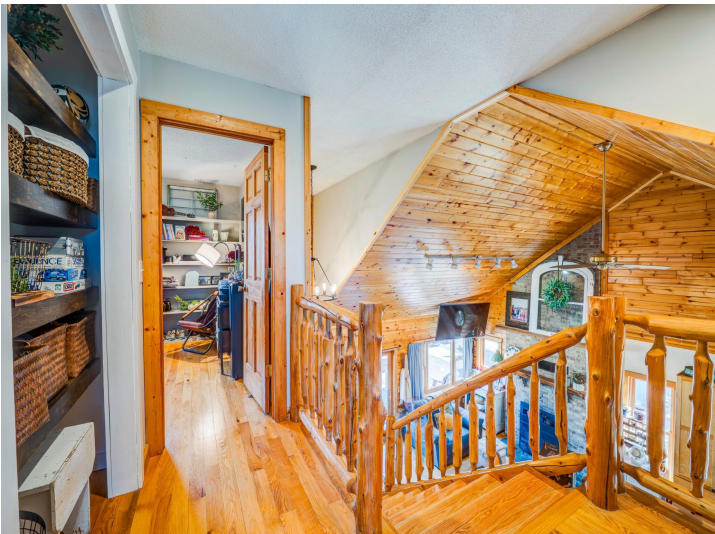
\$699,900
MLS 7058946 Residential
43522 US 71
Bemidji MN 56461



website: www.AffinityRealEstate.com | email: info@affinityrealestate.com | office: 218-237-3333 | fax: 218-237-3377

Affinity
REAL ESTATE INC

\$699,900
MLS 7058946 Residential
43522 US 71
Bemidji MN 56461



website: www.AffinityRealEstate.com | email: info@affinityrealestate.com | office: 218-237-3333 | fax:218-237-3377

Affinity
REAL ESTATE INC

\$699,900
MLS 7058946 Residential
43522 US 71
Bemidji MN 56461



website: www.AffinityRealEstate.com | email: info@affinityrealestate.com | office: 218-237-3333 | fax: 218-237-3377

Affinity
REAL ESTATE INC

\$699,900
MLS 7058946 Residential
43522 US 71
Bemidji MN 56461



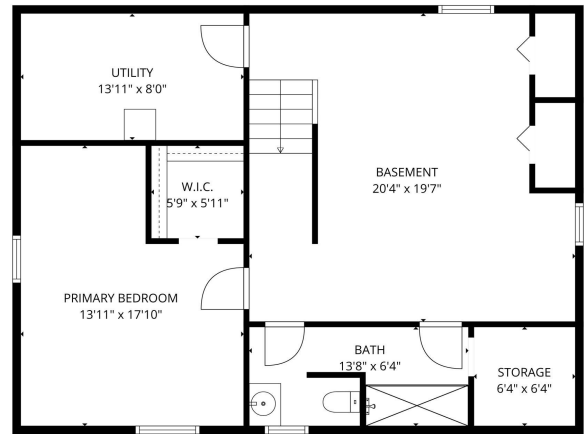
website: www.AffinityRealEstate.com | email: info@affinityrealestate.com | office: 218-237-3333 | fax:218-237-3377

Affinity
REAL ESTATE INC

\$699,900
MLS 7058946 Residential
43522 US 71
Bemidji MN 56461



FLOOR PLAN CREATED BY CUBICASA APP. MEASUREMENTS DEEMED HIGHLY RELIABLE BUT NOT GUARANTEED.

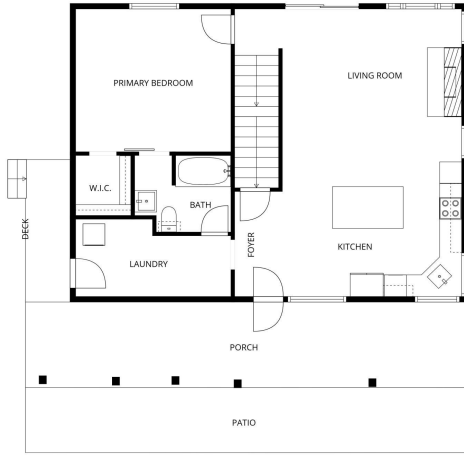


TOTAL: 2136 sq. ft.
 Basement: 754 sq. ft., 1st floor: 906 sq. ft., 2nd floor: 476 sq. ft.
 EXCLUDED AREAS: STORAGE: 40 sq. ft., UTILITY: 112 sq. ft., DECK: 57 sq. ft.,
 PORCH: 308 sq. ft., PATIO: 234 sq. ft., WALLS: 169 sq. ft.
 FLOOR PLAN CREATED BY CUBICASA APP. MEASUREMENTS DEEMED HIGHLY RELIABLE BUT NOT GUARANTEED.

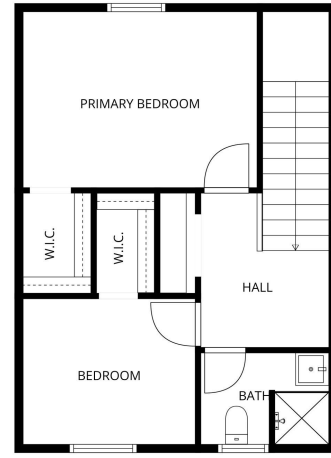
website: www.AffinityRealEstate.com | email: info@affinityrealestate.com | office: 218-237-3333 | fax: 218-237-3377



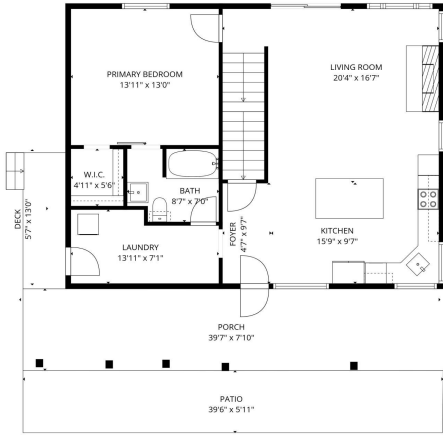
\$699,900
 MLS 7058946 Residential
 43522 US 71
 Bemidji MN 56461



FLOOR PLAN CREATED BY CUBICASA APP. MEASUREMENTS DEEMED HIGHLY RELIABLE BUT NOT GUARANTEED.

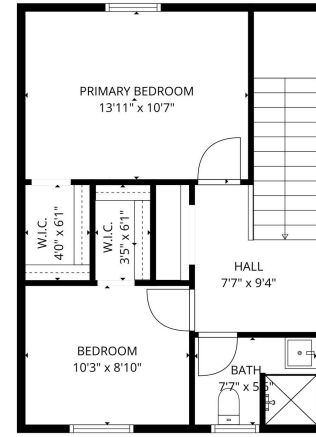


FLOOR PLAN CREATED BY CUBICASA APP. MEASUREMENTS DEEMED HIGHLY RELIABLE BUT NOT GUARANTEED.



TOTAL: 2136 sq. ft.
 Basement: 754 sq. ft., 1st floor: 906 sq. ft., 2nd floor: 476 sq. ft.
 EXCLUDED AREAS: STORAGE: 40 sq. ft., UTILITY: 112 sq. ft., DECK: 57 sq. ft.,
 PORCH: 308 sq. ft., PATIO: 234 sq. ft., WALLS: 169 sq. ft.

FLOOR PLAN CREATED BY CUBICASA APP. MEASUREMENTS DEEMED HIGHLY RELIABLE BUT NOT GUARANTEED.



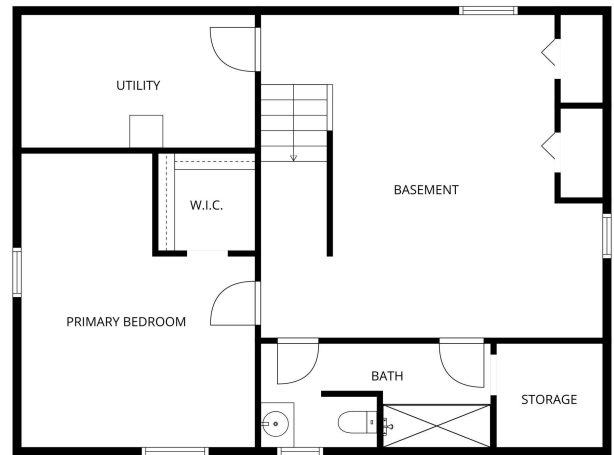
TOTAL: 2136 sq. ft.
 Basement: 754 sq. ft., 1st floor: 906 sq. ft., 2nd floor: 476 sq. ft.
 EXCLUDED AREAS: STORAGE: 40 sq. ft., UTILITY: 112 sq. ft., DECK: 57 sq. ft.,
 PORCH: 308 sq. ft., PATIO: 234 sq. ft., WALLS: 169 sq. ft.

FLOOR PLAN CREATED BY CUBICASA APP. MEASUREMENTS DEEMED HIGHLY RELIABLE BUT NOT GUARANTEED.



TOTAL: 2136 sq. ft.
 Basement: 754 sq. ft., 1st floor: 906 sq. ft., 2nd floor: 476 sq. ft.
 EXCLUDED AREAS: STORAGE: 40 sq. ft., UTILITY: 112 sq. ft., DECK: 57 sq. ft.,
 PORCH: 308 sq. ft., PATIO: 234 sq. ft., WALLS: 169 sq. ft.

FLOOR PLAN CREATED BY CUBICASA APP. MEASUREMENTS DEEMED HIGHLY RELIABLE BUT NOT GUARANTEED.



FLOOR PLAN CREATED BY CUBICASA APP. MEASUREMENTS DEEMED HIGHLY RELIABLE BUT NOT GUARANTEED.

website: www.AffinityRealEstate.com | email: info@affinityrealestate.com | office: 218-237-3333 | fax: 218-237-3377



\$699,900
 MLS 7058946 Residential
 43522 US 71
 Bemidji MN 56461