



MLS 7059023 Land

**\$38,900**

43774 Square Feet  
Finished Lot(s)

14888 Eaglewood Drive  
Detroit Lakes MN 56501

Status: Active

**Description:**

Minutes from Detroit Lakes, this wooded lot offers a prime building opportunity. Tucked among the trees with plenty of wildlife and serenity, it's the perfect place to create your dream home or getaway. Quiet mornings and room to breathe-it's all here!

**Additional Details:**

Lot Acres	43774
Lot Dimensions	274.25x215.48x162.2x159.37
School District	22
Taxes	\$264
Taxes with Assessments	\$264
Tax Year	2025

**Additional Features:**

**Driving Directions:**

Take 10E out of DL, Turn left on Co Hwy 54. Go 2 miles turn R onto Eaglewood Dr. Property on your Left. Stakes are in place.



Listed By:  
The Real Estate Company of Detroit Lakes

Affinity Real Estate Inc. participates in the Regional Multiple Listing Service of Minnesota, Inc Broker Reciprocity (sm) program, allowing us to display other broker's listings on our website. All properties are subject to prior sale, change or withdrawal.



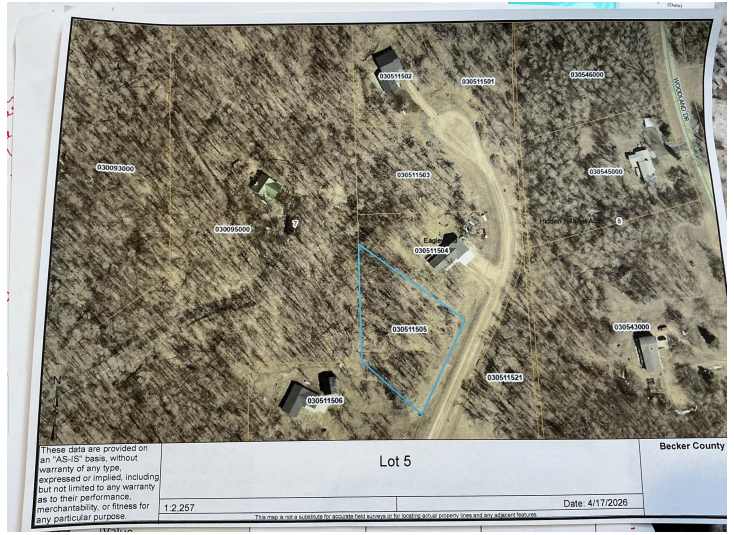
Call Affinity Real Estate

**218-237-3333**

[info@affinityrealestate.com](mailto:info@affinityrealestate.com)



Affinity Real Estate - 600 Park Avenue South - Park Rapids MN 56470



website: [www.AffinityRealEstate.com](http://www.AffinityRealEstate.com) | email: [info@affinityrealestate.com](mailto:info@affinityrealestate.com) | office: 218-237-3333 | fax:218-237-3377



**\$38,900**  
 MLS 7059023 Land  
 14888 Eaglewood Drive  
 Detroit Lakes MN 56501