



MLS 7059037 Residential

\$229,900

1,948 sq ft
3 bedrooms
2 baths

2721 Bixby Avenue
Bemidji MN 56601

Status: Active

Description:

Located just a few blocks from beautiful Lake Bemidji and near Bemidji State University, this well-maintained ranch-style home offers the perfect blend of convenience, space, and flexibility.

Enjoy being within walking distance to local shopping, restaurants, and everyday amenities while still having room to spread out.

The main level features a roomy and functional layout, highlighted by a spacious 12x22 living room that offers endless possibilities for furniture placement and entertaining. The large kitchen provides abundant cabinetry and workspace, making it ideal for daily living or hosting gatherings.

The primary bedroom includes a walk-in closet and is located just steps from the full bathroom for added convenience. Also on the main floor is a versatile office with French doors that open into a bright and welcoming front entry—this space could easily serve as an additional bedroom if desired.

Downstairs, the lower level expands your living space with two additional bedrooms, a full bathroom, and a generous family room perfect for games, movie nights, or relaxing. You'll also appreciate the oversized utility/laundry room along with two additional storage areas to keep everything organized.

Outside, you'll find a rare in-town bonus—a oversized detached 3-stall garage offering plenty of space for vehicles, toys, or a workshop setup.

Currently licensed as a rental, this property presents an excellent investment opportunity, while also being a solid, well-built home ideal for owner-occupancy. Whether you're looking to invest or settle in, this property offers versatility, location, and value all in one.

Additional Details:

Year Built 1935

Lot Acres 0.2

Lot Dimensions 150x58



Listed By
Headwaters Realty Services LLC

School District 31

Affinity Real Estate Inc. participates in the Regional Multiple Listing Service of Minnesota, Inc Broker Reciprocity (sm) program, allowing us to display these properties listing on our website. All properties are subject to prior sale, change or withdrawal.

Tax Year 2025



Call Affinity Real Estate

218-237-3333

info@affinityrealestate.com



Affinity Real Estate - 600 Park Avenue South - Park Rapids MN 56470



website: www.AffinityRealEstate.com | email: info@affinityrealestate.com | office: 218-237-3333 | fax: 218-237-3377

Affinity
REAL ESTATE INC

\$229,900
MLS 7059037 Residential
2721 Bixby Avenue
Bemidji MN 56601



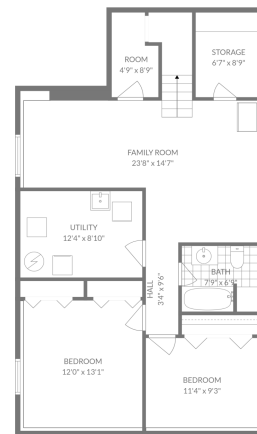
website: www.AffinityRealEstate.com | email: info@affinityrealestate.com | office: 218-237-3333 | fax: 218-237-3377

Affinity
REAL ESTATE INC

\$229,900
MLS 7059037 Residential
2721 Bixby Avenue
Bemidji MN 56601



BASEMENT



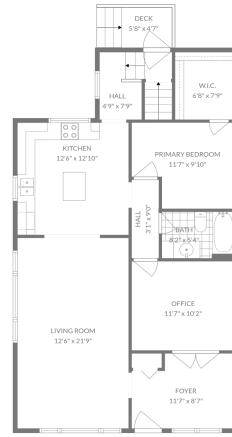
TOTAL: 1742 sq. ft.
Basement: 269 sq. ft., 1st floor: 973 sq. ft.
EXCLUDED AREAS: UTILITY: 110 sq. ft., STORAGE: 58 sq. ft., ROOM: 37 sq. ft.,
DECK: 39 sq. ft., WALLS: 137 sq. ft.
FLOOR PLAN CREATED BY COLUMBIA MP REAL ESTATE SERVICES. THIS IS A PRELIMINARY PLAN. NOT FOR CONSTRUCTION.

website: www.AffinityRealEstate.com | email: info@affinityrealestate.com | office: 218-237-3333 | fax: 218-237-3377



\$229,900
MLS 7059037 Residential
2721 Bixby Avenue
Bemidji MN 56601

1ST FLOOR



TOTAL: 1742 sq. ft.
 Basement: 769 sq. ft. 1st floor: 973 sq. ft.
 EXCLUDED AREAS: UTILITY: 110 sq. ft. STORAGE: 58 sq. ft. ROOM: 37 sq. ft.
 DECK: 39 sq. ft. WALLS: 137 sq. ft.

FLOOR PLAN CREATED BY CIRCULAR APP. MEASUREMENTS DERIVED FROM A PUBLICLY AVAILABLE 3D POINT CLOUD.



TOTAL: 1742 sq. ft.
 Basement: 769 sq. ft. 1st floor: 973 sq. ft.
 EXCLUDED AREAS: UTILITY: 110 sq. ft. STORAGE: 58 sq. ft. ROOM: 37 sq. ft.
 DECK: 39 sq. ft. WALLS: 137 sq. ft.

FLOOR PLAN CREATED BY CIRCULAR APP. MEASUREMENTS DERIVED FROM A PUBLICLY AVAILABLE 3D POINT CLOUD.



website: www.AffinityRealEstate.com | email: info@affinityrealestate.com | office: 218-237-3333 | fax: 218-237-3377



\$229,900
 MLS 7059037 Residential
 2721 Bixby Avenue
 Bemidji MN 56601